

**From:** [Han, James](#)  
**To:** [Brandon Heiman](#)  
**Cc:** [Lapustea, Florin](#); [Downtown West Project](#)  
**Subject:** RE: Google village project and Diridon expansion  
**Date:** Monday, April 26, 2021 4:58:03 PM  
**Attachments:** [image001.png](#)

---

Hi Brandon,

Sorry for the late response. Regarding your question Please see below for response from Florin, Department of Transportation.

Cleaves Ct and Morrison Ave are included as streets that will be studied by the DTW project for potential parking intrusion/parking monitoring as a means to assess the need for inclusion/extension into the residential parking permit program. See below for a clip of the streets to be studied in the future per the project's Neighborhood Traffic and Parking Intrusion Monitoring Plans

(<https://www.sanjoseca.gov/home/showpublisheddocument/71639>)

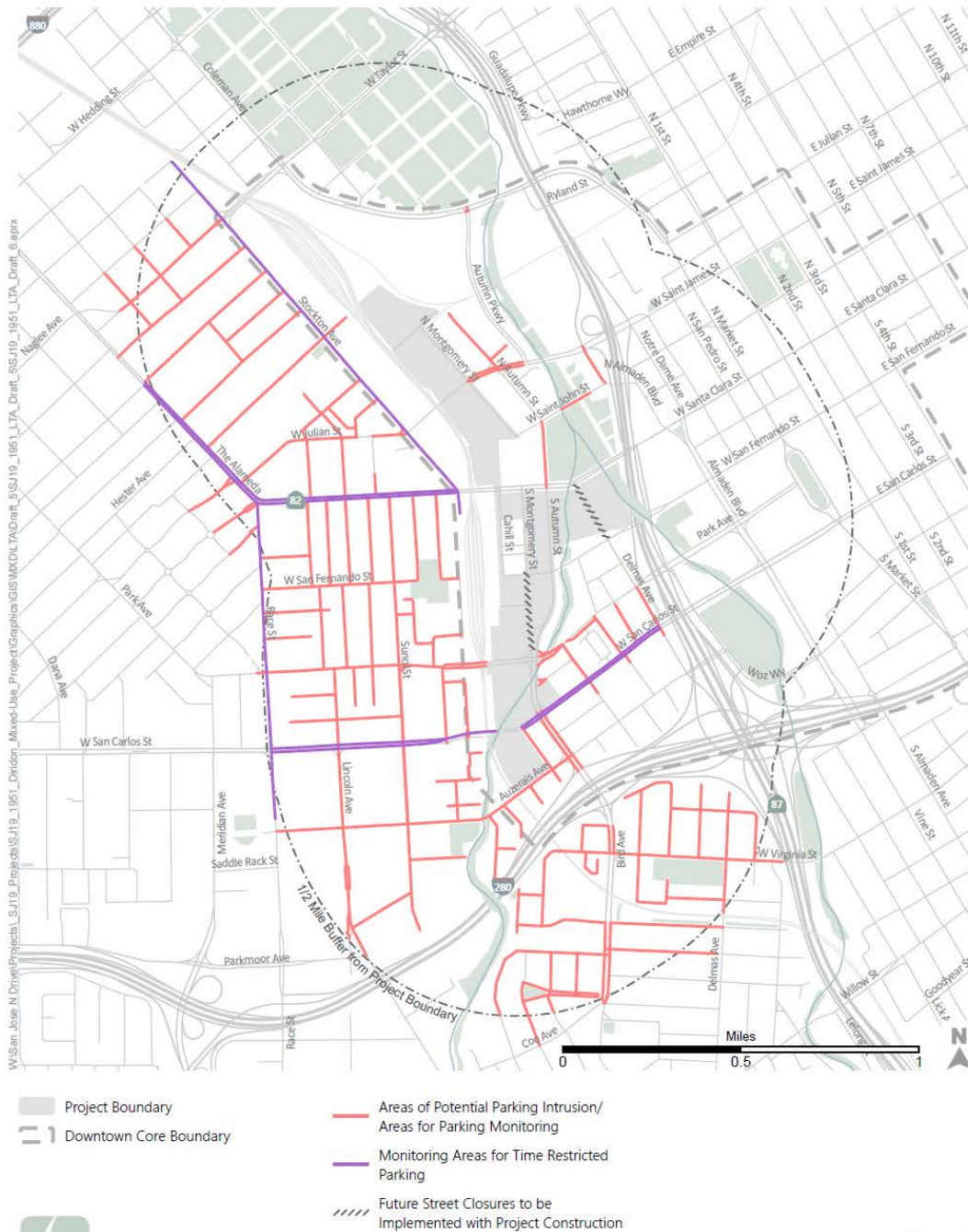


Figure 5

## Likely Parking Intrusion/Spillover Locations

Downtown West

Thanks!

-Florin

James Han  
Planner | Planning Division | PBCE

City of San José | 200 East Santa Clara Street

Email: [james.han@sanjoseca.gov](mailto:james.han@sanjoseca.gov) | Phone: (408)-535-7843

For More Information Please Visit: <http://www.sanjoseca.gov/planning>

San José City Hall is closed in response to COVID-19.

I am working remotely in accord with governor's and City's direction.

I will monitor email during this time.

---

**From:** Brandon Heiman [REDACTED]

**Sent:** Wednesday, April 21, 2021 8:44 AM

**To:** Han, James <[James.Han@sanjoseca.gov](mailto:James.Han@sanjoseca.gov)>

**Subject:** Google village project and Diridon expansion

[External Email]

Hi

As you may be aware, the streets on the opposite side of Diridon, between Alameda and Park are permit parking only.

The streets just south of park (Cleaves court) are not permit parking and already fill up daily.

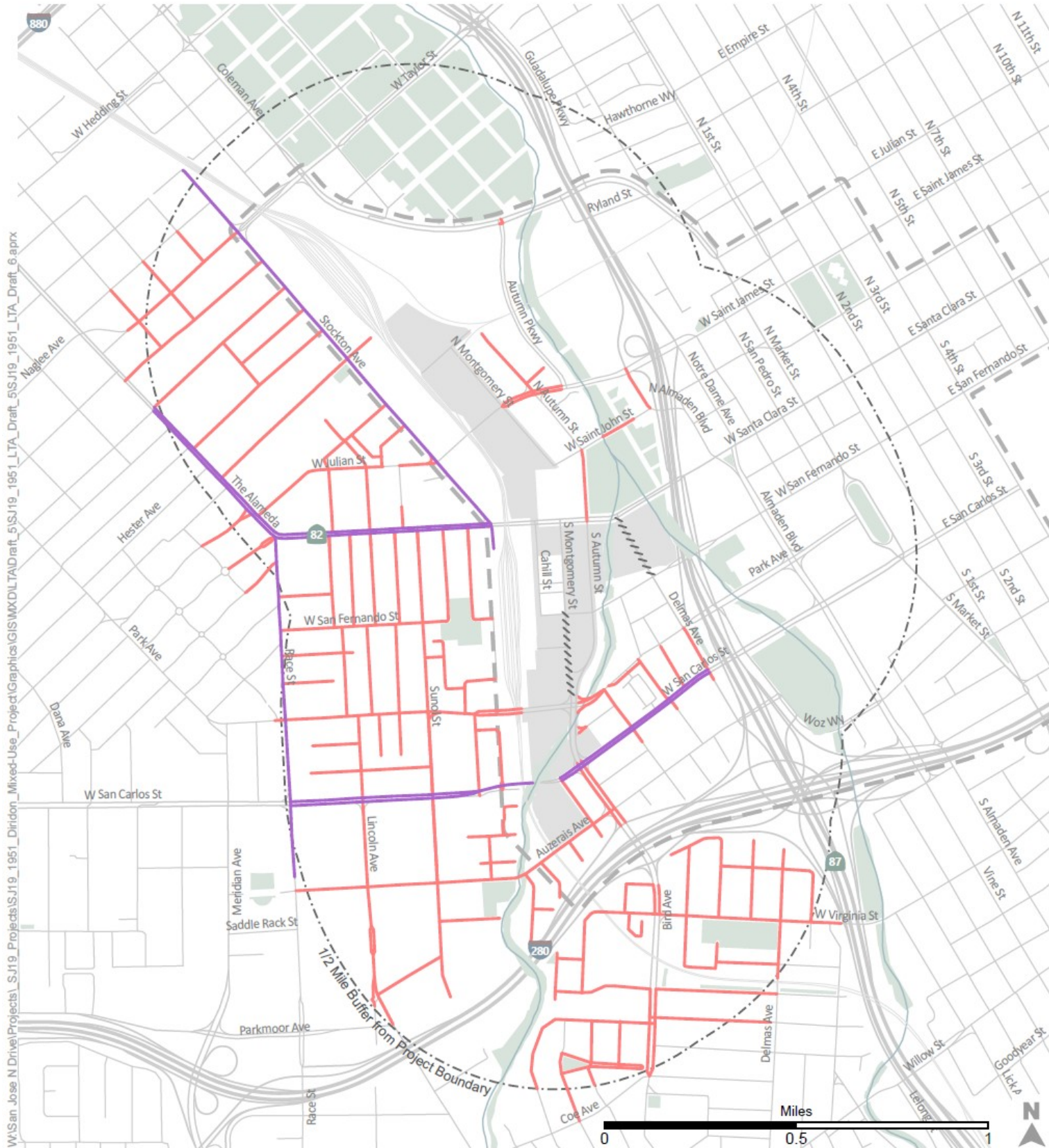
As this street is just 1 block outside the proposed Diridon expansion, can we get the last southern part of Cleaves and Morrison permitted as well as part of the overall plan?

Thank you

**Brandon Heiman**

[REDACTED]

This message is from outside the City email system. Do not open links or attachments from untrusted sources.








-  Project Boundary
-  Downtown Core Boundary
-  Areas of Potential Parking Intrusion/  
Areas for Parking Monitoring
-  Monitoring Areas for Time Restricted  
Parking
-  Future Street Closures to be  
Implemented with Project Construction



Figure 5  
Likely Parking Intrusion/Spillover Locations