

**From:** [Severino, Lori](#)  
**To:** [Han, James](#); [Tu, John](#); [Hughey, Rosalynn](#); [Rood, Timothy](#); [Manford, Robert](#); [Klein, Nanci](#); [Ruano, Jose](#)  
**Subject:** FW: Public Comments about Diridon Development to SAAG  
**Date:** Monday, April 19, 2021 4:34:17 PM  
**Attachments:** [Google Villages.pdf](#)

---

**From:** Nam Nguyen [REDACTED]  
**Sent:** Saturday, April 17, 2021 12:20 PM  
**To:** Severino, Lori <Lori.Severino@sanjoseca.gov>  
**Subject:** Fwd: Public Comments about Diridon Development to SAAG

[External Email]

Hello,

Thank you for the informative community meeting. The relative lack of engagement is an encouraging sign that your team has dug deep to lay the foundation for a development that serves San Jose.

Connecting back to my last statement in the breakout room: I found an old concept that I had sent back to you ages ago. This illustrates what I mean by satellite offices in the disparate Urban Villages.

I understand that you and the City have your hands full with making the most complete deal possible between Google and the City of San Jose. I really appreciate the back-breaking work that your team has done to include the priorities and voices of the community.

Looking to the future, with remote-working becoming a long-lasting reality, encouraging a company like Google to have both its centerpiece HQ and neighborhood-integrated offices will have compounding benefits to Google and the City.

Such a concept (i.e. municipal incentives) could activate the Urban Villages as economic centers and magnets. Suburbs surrounding the villages will benefit from decreased miles driven for local employees as well as local neighborhood all-day activities. Establishing the Urban Villages with heightened activity will give more credence to improving/expanding public transit. Placing loci offices in some Urban Villages or other sites will boost opportunities for minority communities. Increased focus on these areas will bring attention to the needs of those communities in regards to affordable housing, infrastructure, and equity. And, Google provides flexibility and better work-life balance for their many employees spread across San Jose.

Again, thank you for the monumental work that your team continues to put into making this transformative development each step closer to reality. Upon completion, Downtown West will

fundamentally alter the fabric of San Jose's core and the Bay Area's trajectory towards inclusive, urban development. I ask that the same energy and enterprise be harnessed for uplifting the rest of the city.

Sincerely,  
Nam Nguyen

----- Forwarded message -----

From: **Nam Nguyen** [REDACTED]  
Date: Mon, Sep 24, 2018 at 4:35 PM  
Subject: Public Comments about Diridon Development to SAAG  
To: <[lori.severino@sanjoseca.gov](mailto:lori.severino@sanjoseca.gov)>, <[Tara.Reid@sanjoseca.gov](mailto:Tara.Reid@sanjoseca.gov)>

Hello,

I am writing to provide a notion of how to possibly take public pressure off of the city and Google in regards to the Diridon Station Area.

Essentially, with the Station Area, there is concern that it will be a repeat of Amazon's "South Lake Union" gentrification event in Seattle. However, with the attached PDF, I propose that San Jose and Google look to spreading development into the Urban Villages as well. Incremental and relatively lower-cost investments, but with gains to be made in the public eye.

Please let me know if this is the correct avenue for such comments, and also if you have any questions.

Sincerely,  
Nam Nguyen

This message is from outside the City email system. Do not open links or attachments from untrusted sources.



# GOOGLE VILLAGE NETWORK

EXPANDING THE NETWORK TO THE STREETS

NAM NGUYEN

SEPTEMBER 24, 2018

# TELEWORKING, COWORKING → SATELLITES

- Teleworking: Operating outside official facilities (home, café, etc.)
- Coworking: Operating in facilities operated by 3<sup>rd</sup> party (WeWork)
- Satellites: Facilities for teleworking employees that is managed by employer



# SATELLITES

## BENEFITS

- Flexibility for employees in secure environment → protect IP
- 24/7 secure facility for late work
- Place facilities where people live
- Integration/Fostering communities

## DRAWBACKS

- Purchase/Leasing Buildings
- Construction/Furnishing Spaces
- Overhead: IT, Property Management
- Community Pushback
- Regulations

# GOOGLE ↔ SAN JOSE

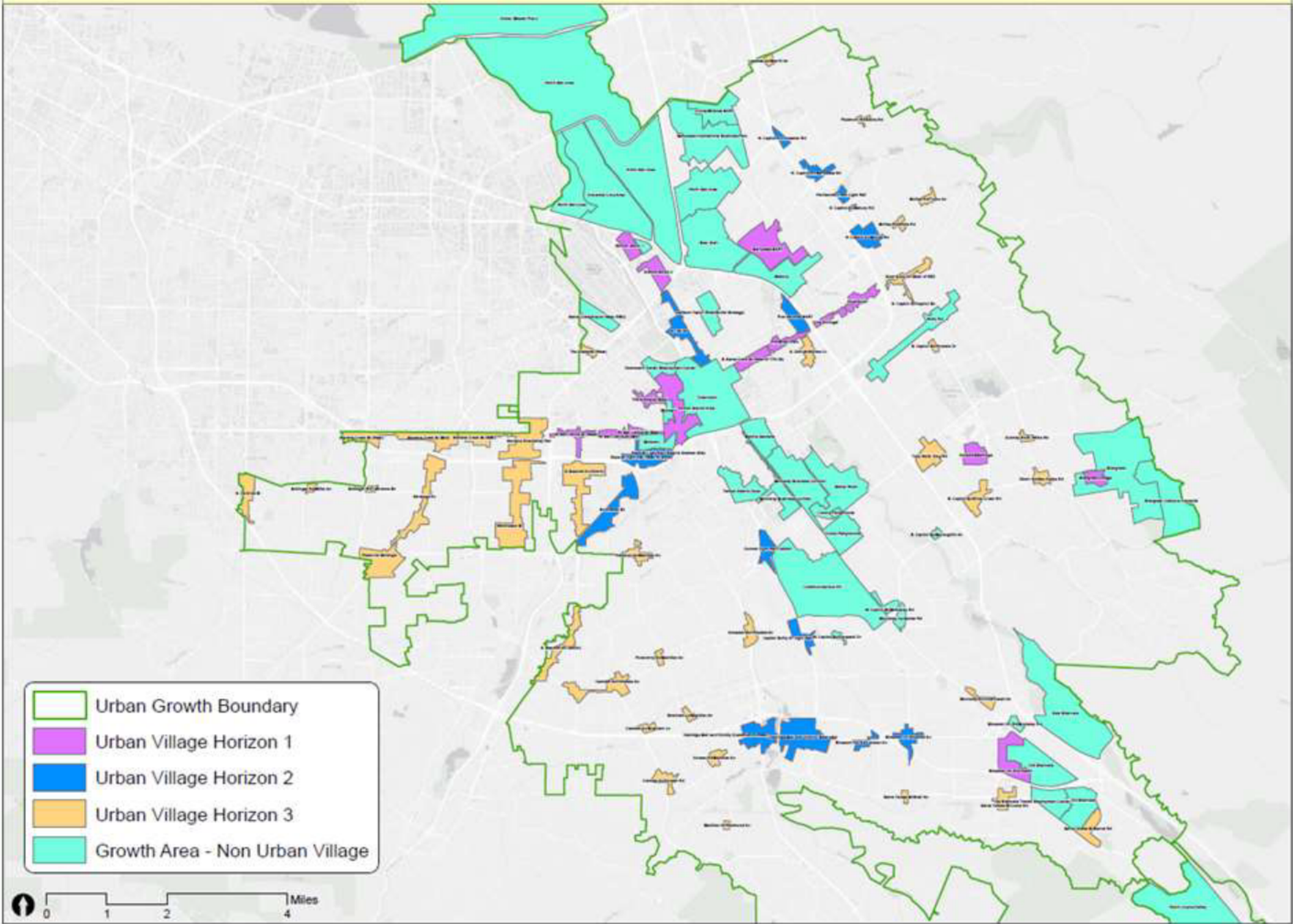
- Diridon Campus

- 10-20k Jobs
- Acres of campus
- Several buildings
- Mixed residential and commercial
- “Halo” Campus
- Connection to public transit
- Urban San Jose downtown core

- Urban Villages

- Envision San Jose 2040
- Distributed clusters of mixed use residential and commercial
- Activate suburban areas
- Proximity to Freeways, Public Transit
- Nexus of walking/biking neighborhoods

# Envision San Jose 2040 - Growth Areas





# DIRIDON CAMPUS

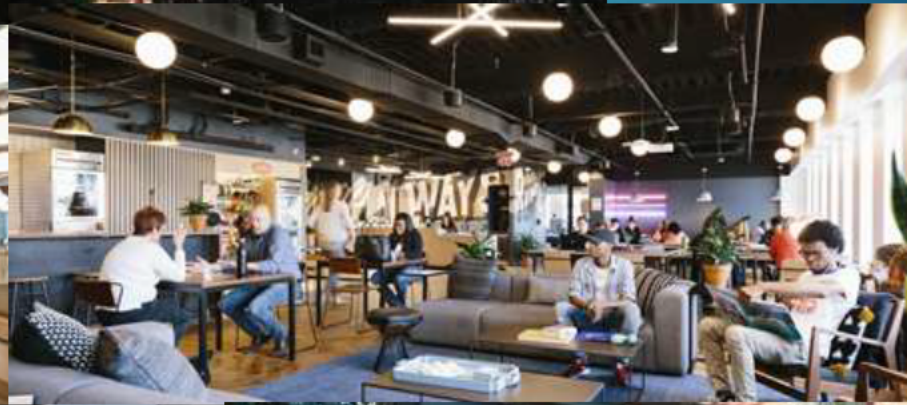
- 15-20k Employees
- Transit-oriented campus
- Acreage owned by Google
- Development led by Google
- New buildings by Google





# SATELLITE OFFICES

- 10s to 100s employees
- Teleworking, net-centric collaboration
- Commutes by walking/biking
- Building either leased/owned by Google
- Partial/Entire building used by Google
- Integration into community fabric
- Lends to diverse mixed use





# SATELLITE ON MAIN STREET

- Walkable, small-scale neighborhood
- Connection to suburbs
- Blend from low-medium-high density





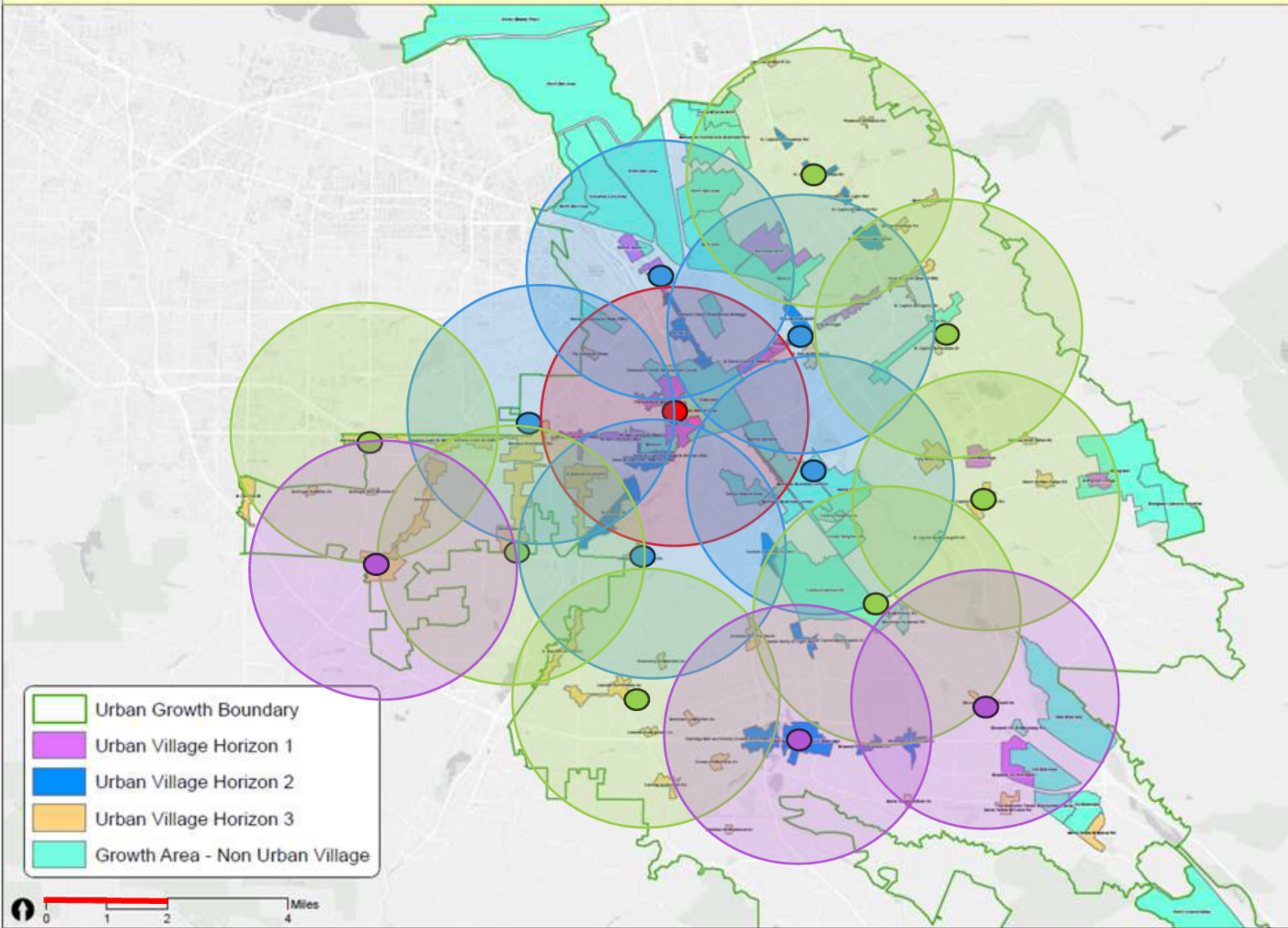
# Envision San Jose 2040 - Growth Areas

● Diridon Campus  
- 15-20k Employees

● Outer Offices  
- 100s-1k Employees

● Suburb Offices  
- 10-100s Employees

● Outmost Offices  
- 10-100 Employees



- Urban Growth Boundary
- Urban Village Horizon 1
- Urban Village Horizon 2
- Urban Village Horizon 3
- Growth Area - Non Urban Village



- Transit Options:

- Bus
- Train
- VTA
- Freeways
- Walk/Bike
  - 2 Mile Radii

