

**From:** [Phan, Johnny](#)  
**To:** [Downtown West Project](#)  
**Subject:** FW: Google - Diridon/DW - Residential Design  
**Date:** Tuesday, April 6, 2021 2:40:01 PM  
**Attachments:** [SCB Borrowed Light Units \(1\)-c.pdf](#)

---

---

**From:** Miller, Gregg <[gmler@coblenzlaw.com](mailto:gmler@coblenzlaw.com)>  
**Sent:** Thursday, February 25, 2021 8:03 PM  
**To:** Phan, Johnny <[Johnny.Phan@sanjoseca.gov](mailto:Johnny.Phan@sanjoseca.gov)>  
**Subject:** Google - Diridon/DW - Residential Design

[External Email]

Johnny: please see attached pdf that shows the layout and photographs of a unit design that uses a concept known as "borrowed light" through interior glazing for bedrooms rather than exterior wall windows. I believe that this will be of interest to Rachel, Jacky and AP. Thanks,

**Gregg Miller**

**Coblentz Patch Duffy & Bass LLP**

One Montgomery Street, Suite 3000

San Francisco, CA 94104

Cell: 415-939-3142 | Direct Dial 415-772-5736 | Office 415-391-4800

[gmler@coblenzlaw.com](mailto:gmler@coblenzlaw.com)

[www.coblenzlaw.com](http://www.coblenzlaw.com)

This message is from outside the City email system. Do not open links or attachments from untrusted sources.

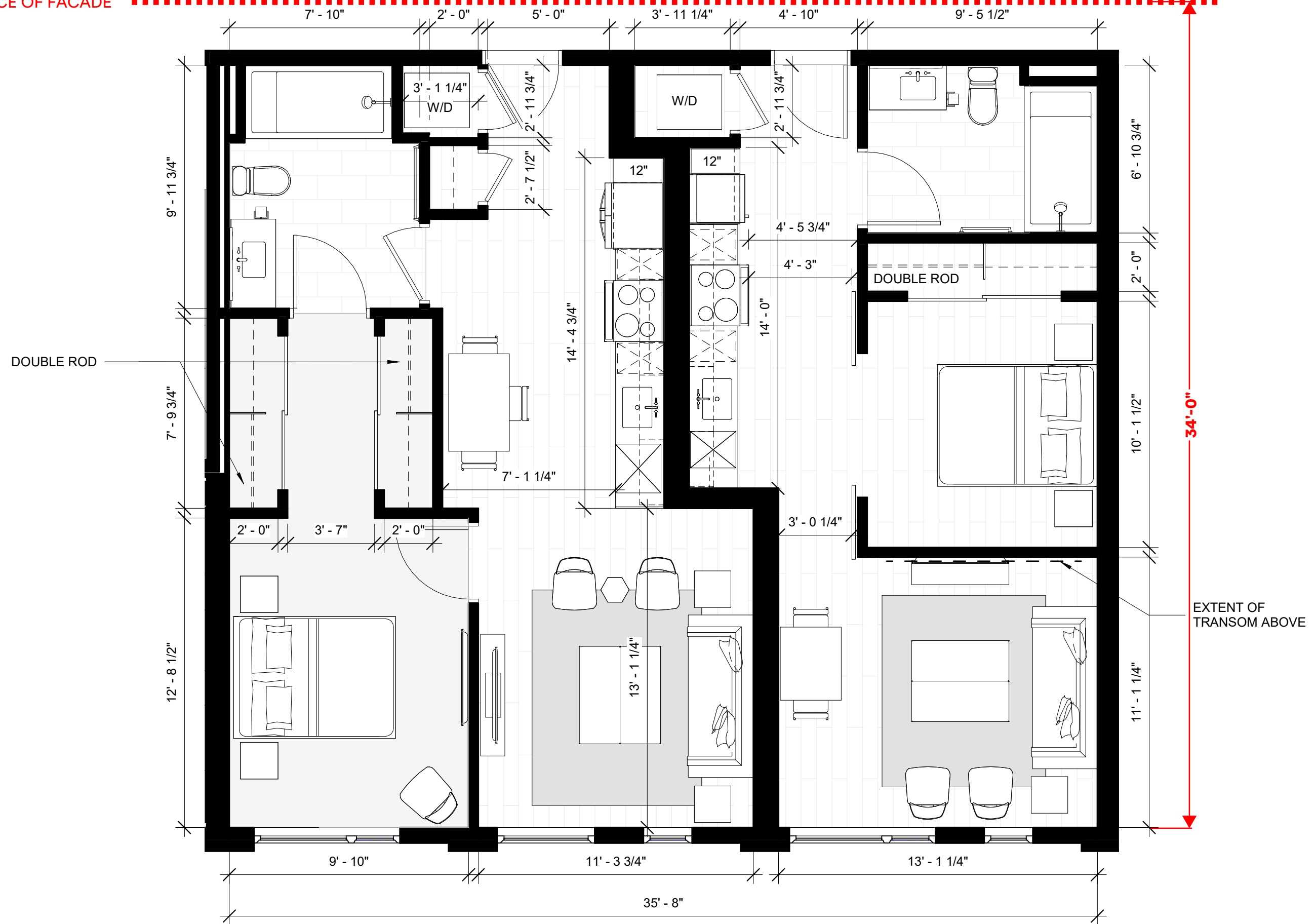
SOLOMON CORDWELL BUENZ

---

# Borrowed-Light Units

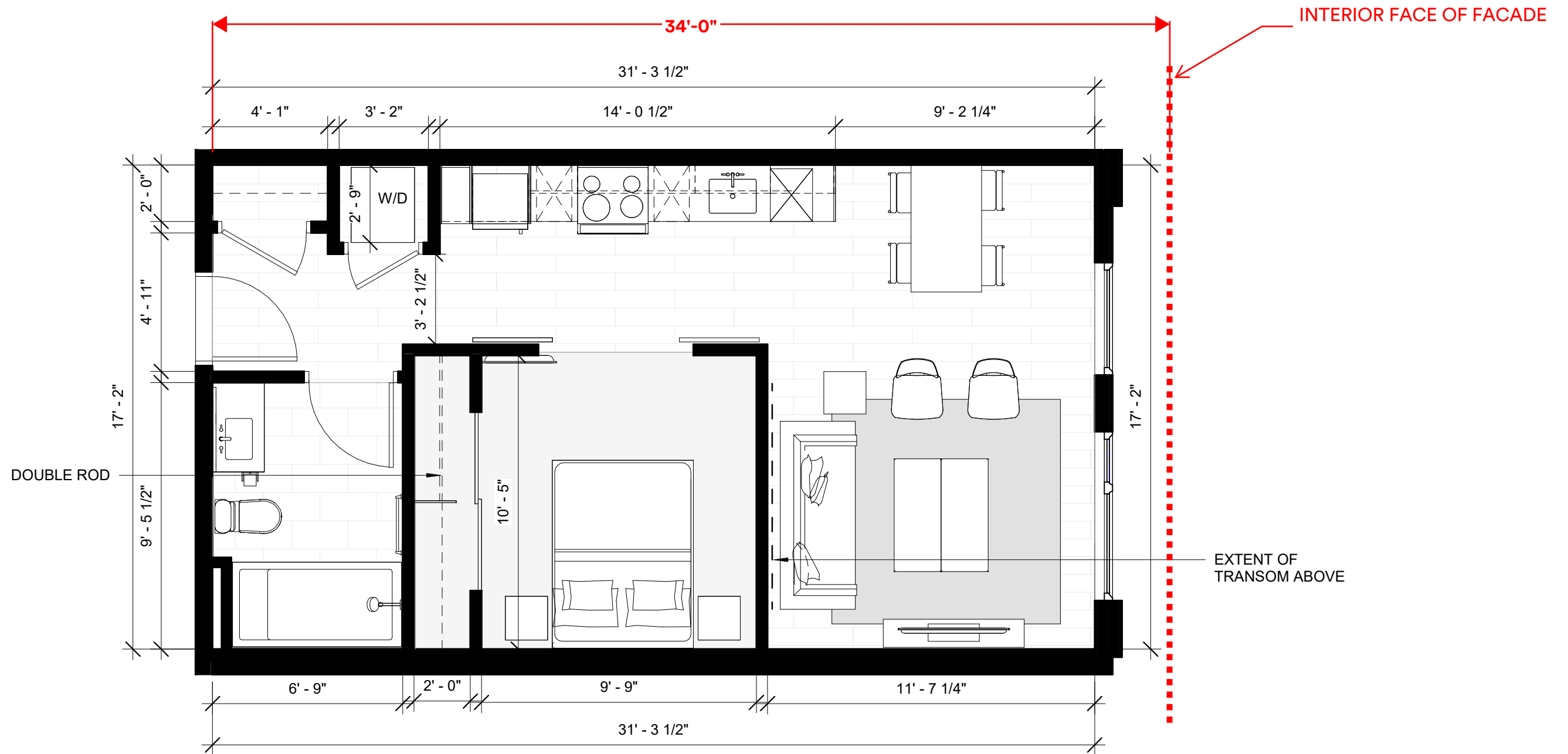
FEBRUARY 25, 2021



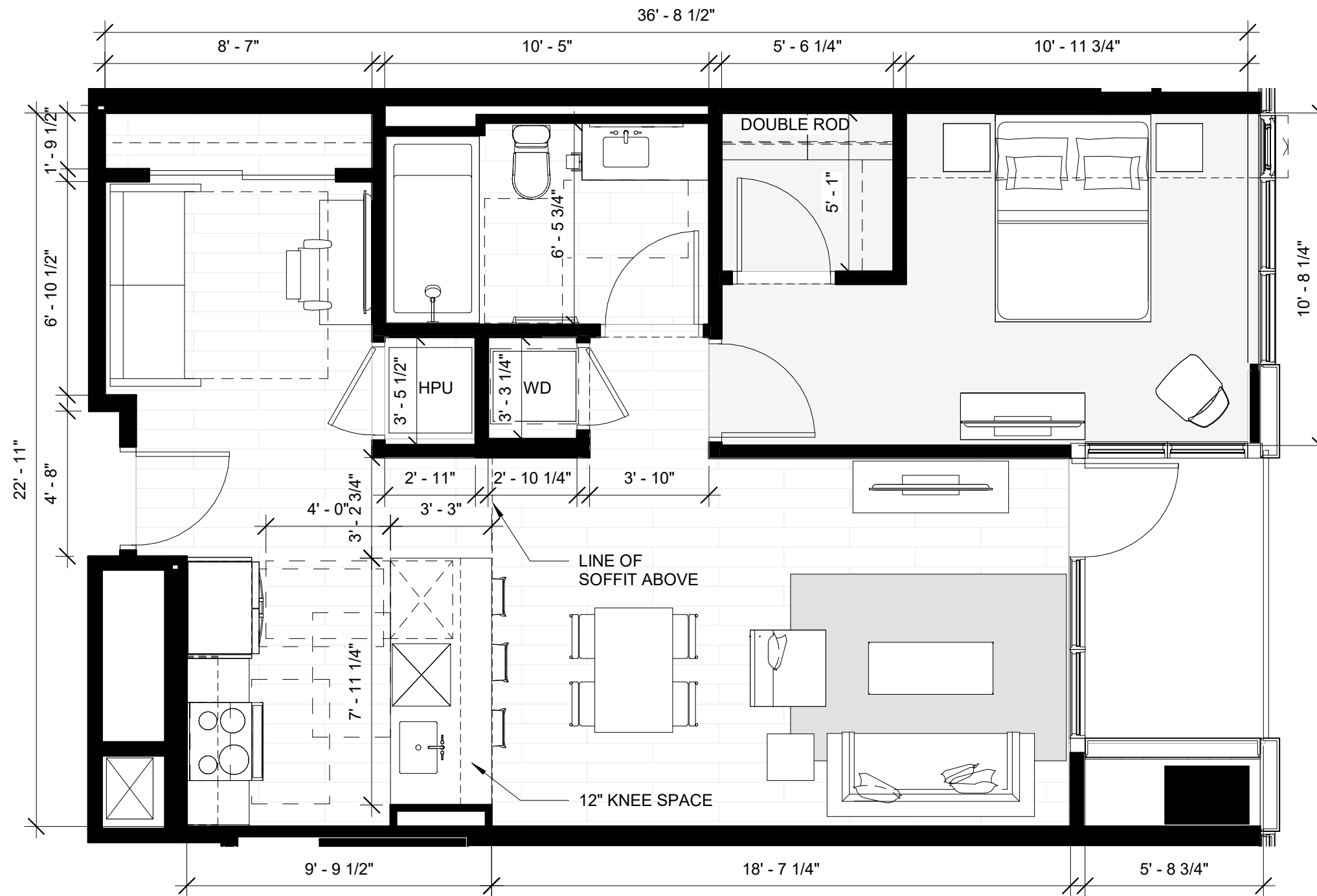


# NESTED ONE BEDROOM UNITS





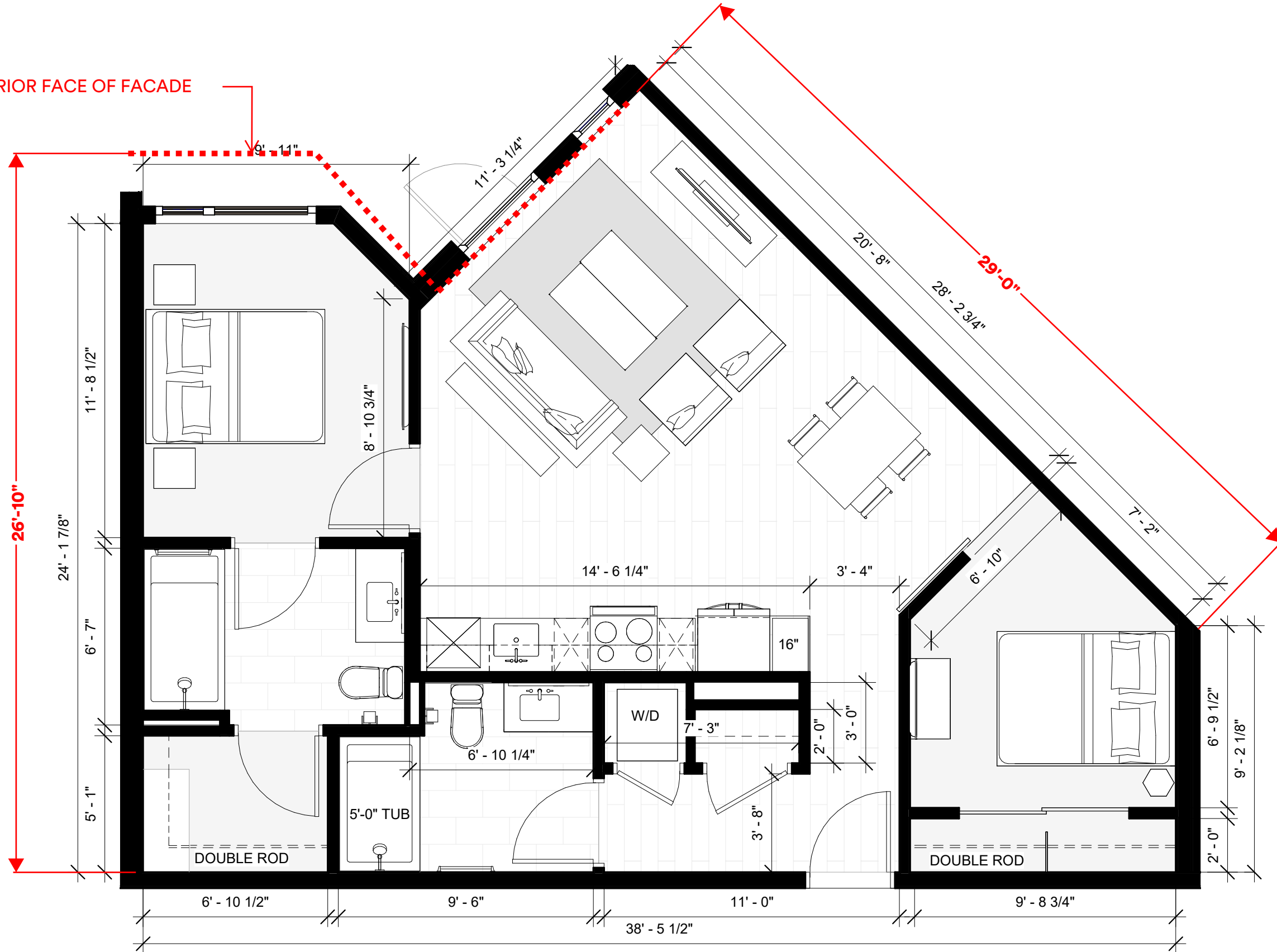
# SHOTGUN ONE BEDROOM UNIT



# SHOTGUN ONE BEDROOM + DEN (TWO BEDROOM) UNIT



INTERIOR FACE OF FACADE



## TWO BEDROOM INTERIOR CORNER UNIT



















