

From: [Dave Javid](#)
To: [Severino, Lori](#)
Cc: [Matthew Raimi](#); [dianab](#); [Suhaila Sikand](#); [Rivas, Vanessa](#); [Ruano, Jose](#); [Han, James](#); [Tu, John](#); [Clements, Kristen](#); [Mendez, Zacharias](#); [Sanderfer, Larissa](#); [Eidlin, Eric](#); [Heyne, Colin](#); [Wessling, Cheryl](#); [Handler, Elisabeth](#); [Scott, Jeff](#); [Tam, Wilson](#); [VanderVeen, Rachel](#); [Breslin, Emily](#); [Benabente, Julie](#); [Rood, Timothy](#); [Burnham, Ncolle](#); [Zenk, Jessica](#); [Groen, Mary Anne](#); [Ramos, Christina M](#); [Moua, Louansee](#); [Lapustea, Florin](#); [Banwait, Manjit](#); [Do, Ryan](#); [Hughey, Rosalynn](#); [Manford, Robert](#); [Walesh, Kim](#); [Klein, Nanci](#); [Downtown West Project](#); [sami@raimiassociates.com](#); [ron@raimiassociates.com](#); [melissa@raimiassociates.com](#); [Troy Reinhalter](#); [Tom, Vivian](#); [O'Connor, Kevin](#); [kelsey@raimiassociates.com](#); [Jessica Zenk](#); [Khattab, Zahi](#); [Provedor, Jennifer](#)
Subject: Re: Downtown West Community Meeting - Annotated Agenda + Facilitation Guide
Date: Monday, October 19, 2020 3:19:32 PM
Attachments: [SJ-DTW Workshop 10.19 Draft Annotated-Agenda v2.docx](#)
[SJ-DTW Workshop 10.19 SMALL-GROUP-Template.docx](#)
[SJC 2020 City Community Mtg Visual Aid 10192020 FINAL DRAFT.pdf](#)

[External Email]

Sorry for the multiple emails but I just realized I forgot to include Google's Visual Aid (attached) for the Small Group discussion.

For all who plan to attend tonight please plan to **log on by 6:15pm** at the latest so we can set you up as a Co-Host to present, facilitate, or give you the ability to move between small groups. We will open the Zoom Meeting at 6:00, and allow the public to enter at 6:30.

Please let me know if you have any questions.

DAVE JAVID, AICP, LEED AP
Founder + Principal

We moved to a new office, please note the updated address below.



On Mon, Oct 19, 2020 at 2:56 PM Dave Javid <dave@plantoplace.com> wrote:

Hi all,

Attached is the latest Annotated Agenda + Facilitation Guide, as well as the Word template for note takers to use during the small group discussion. Please review the documents and let us know if you have any questions. We will update you with any changes before the meeting.

Thanks, see you all tonight.

DAVE JAVID, AICP, LEED AP
Founder + Principal

We moved to a new office, please note the updated address below.



On Mon, Oct 19, 2020 at 9:28 AM Severino, Lori <Lori.Severino@sanjoseca.gov> wrote:

Join Zoom Meeting

<https://sanjoseca.zoom.us/j/92905636356>

Meeting ID: 929 0563 6356

One tap mobile

+12133388477,,92905636356# US (Los Angeles) 14086380968,,92905636356# US

+(San Jose)

Dial by your location

+1 213 338 8477 US (Los Angeles)

+1 408 638 0968 US (San Jose)

877 853 5257 US Toll-free

888 475 4499 US Toll-free

Meeting ID: 929 0563 6356

Find your local number: <https://sanjoseca.zoom.us/u/aCAKRpJsf>

Join by Skype for Business

<https://sanjoseca.zoom.us/skype/92905636356>



This message is from outside the City email system. Do not open links or attachments from untrusted sources.

Downtown West Community Meeting #2

Monday, October 19, 6:30-8:30 pm

6:00 (6:15 at the latest) for all staff in attendance!

- Meeting Purpose:
 - Gather feedback on updated submittal documents available for public review
 - Focusing on the DWDSG
 - Also covers updated plans for open space, infrastructure, and transportation and applications for regulatory changes
 - Not intended to collect comments on the DEIR
 - Provide background information to convey key messages, respond to frequently asked questions received in advance, and prime participants for discussion
- Format:
 - Zoom meeting facilitated by Dave Javid (Plan to Place consultant), with a presentation and breakout rooms for hearing questions/comments in small groups
 - Presentation will be recorded and posted online after the meeting
 - We will not record the breakout rooms
 - Participants will be randomly distributed across breakout rooms
 - Interpreters to clarify that people need to raise hand if they want to be in the Spanish or Vietnamese room so Jennifer can move them before random distribution
 - Participants will not be able to unmute themselves
 - All members of the project team (City staff, Google team/ reps, consultant team) will be made Co-Hosts to be able to unmute themselves and move around the small group break out rooms.
 -
- Agenda:
 - **6:00 (6:15 at latest)** – all project team members (City staff, Google team/ reps, consultant team) to log on – Jennifer to give all Co-Host access to all
 - **6:30** – let people in from waiting room and **START RECORDING**
 - **6:34-7:10** – Welcome, City staff and application presentation (see details below)
 - **7:15-8:30** – Small group discussions in breakout rooms
 - No report back or wrap up – groups can end early and people can drop off when they want

Presentation flow and timing	Speaker	Time
WELCOME/LOGISTICS Interpreters – <i>ask interpreters to introduce themselves and read slide – Jennifer to open Spanish (Francisco Garcia) and Vietnamese (Loan Phuong) rooms</i> Meeting purpose (focus on DSG; including how we will collect feedback and what we'll do with input) Agenda review City Departments Represented <i>Live poll (Jennifer to set up in advance):</i> <ul style="list-style-type: none"> • <i>Demographics</i> • <i>Have you attended a community meeting on this project before?</i> 	Dave	6:34 (6 min)
OVERVIEW (context/process)	Rosalynn and Shannon?	6:40 (5 min)
GOOGLE PRESENTATION	Bhaves and Laura	6:45 (20 min)
STAFF PRESENTATION (TO BE UPDATED) Address FAQs Clarify when and how we will talk to public about housing/jobs (Nov 9 SAAG, online survey) <ul style="list-style-type: none"> • <i>Jennifer to start to set up Small Groups in advance</i> 	John	7:05 (5 min)
UPCOMING ENGAGEMENT OPPORTUNITIES	Dave	7:10 (4 min)
BREAKOUT ROOM INSTRUCTIONS 1. Set expectations with full group in breakout rooms 2. <i>Ask Spanish and Vietnamese speakers to use raise hand feature if they want to be placed in rooms facilitated in Spanish or Vietnamese</i>	Dave	7:15 (1 min)

Live poll (Jennifer to set up in advance):

- *Project Understanding*
- *Topics of interest*

Interpreter Resources:

- Live interpretation of presentation using one ULG interpreter per language, in Spanish (*Francisco Garcia*) and Vietnamese (*Loan Phuong*). Resources for interpreters:
 - Watch recorded videos online in advance to prepare
 - James and Google team will send final PPTs by 4pm Monday 10/19

Internal Team Resources:

- Background presentations posted on Oct 7, along with project documents and feedback forms to gather questions/comments
 - www.sanjoseca.gov/GoogleProject
 - www.diridonsj.org/fall2020

BREAKOUT ROOM ASSIGNMENTS

Role	Breakout Room 1	Breakout Room 2	Breakout Room 3	Breakout Room 4	Breakout Room 5 <i>Spanish</i>	Breakout Room 6 <i>Vietnamese</i>
Facilitators	Matt Raimi	Dave Javid	Tim Rood	Ron Whitemore	Jose Ruano	Kieulan Pham
Notetakers	Troy Reinhalter	Kelsey Hubbard	Sami Taylor	Suhaila Sikand	Diana Benitez	Thai Le
City Generalists	James, Eric Eidlin	John Tu, Manjit Banwait	Larissa Sanderfer, Florin Lapustea	Robert Manford, Vivian Tom		
City Support	Jessica Zenk, Zak Mendez	Rosalynn Hughey, Zahi Khattab	Julie Benabente	Ryan Do, Lori Severino		
Google Generalists	Bhavesh Parikh	Sheela Jivan	Bethany Windle	Marla Weinstein	Ricardo Benavidez	Jessica Graham
Lendlease Generalists	Alex Frankl	Amanda Wolf	Andy Wang	Tiffany Bohee	Anton Walker	Ava Bromberg
Sitelab Generalists	Eri Suzuki	Alyssa Garcia	Woody Hanson	Nicole Wagy	Ashutosh Singhal	Sarah Estephan
Standby Support	Cindy Muller Laura Crescimano Alexa Arena	Anthony Fioravanti Michael Flynn John Lewallen	Tyson Tano Sandro Tubertini Tania Shamoun	Chris Garvin Paul Dunne	Hideko Anderson Ann Wharton	Tyler Hanson

Coordination

- All will be Co-hosts and can unmute themselves and move between rooms
- **Communication** - Consultant team on text chain, Google team on g-chat, and City staff on Teams to let each other know who we need and where to help answer questions
- **Technical Difficulties / Questions:** Email Jennifer Provedor (meeting host) if needed - jennifer.provedor@sanjoseca.gov

For Spanish/Vietnamese rooms:

- Can use interpreter for subsequent interpretation if needed
- Floaters jump in to answer questions using subsequent interpretation
- If no one in interpretation rooms, can be used as a lobby

Other staff to be added as co-hosts to float?

FACILATATION GUIDE

FACILATATOR INSTRUCTIONS:

1. **Mute all mics when you first enter the room**
2. **Reiterate expectations** for small group exercise
 - Primary goal to hear from public – most of the air time should be from participants
 - We will take down all comments and questions on our virtual white board and answer what we can tonight. Questions not answered tonight will be answered as part of the summary or report out of this meeting that we will post online.
 - Basic ground rules:
 - **Use the RAISE HAND feature if you want to speak and facilitator will unmute/lower their hand when its your turn**
 - Be respectful – personal attacks will not be permitted
 - Share the floor – keep questions and comments concise to allow everyone opportunities to share
 - For your questions:
 - Staff in the room may jump in to answer if they can, other staff (floaters) may be pulled in if needed
 - We will also provide answers to questions we receive tonight in the meeting summary we will post online
 - Answers will be brief to allow people plenty of time for participants to contribute
 - Remind people that the conversation can continue after the meeting – especially if room sizes are big (>20)
3. **Facilitation** – be mindful to allow space for everyone to contribute. Allow participants to share their views but not dominate the conversation. If needed use a timer to restrict comments to 2-3 minutes if time becomes an issue.
4. **Use Word template as a resource to ask the following questions.** Add your group number to the template and use questions to guide the discussion, recognizing that the conversation and direction will evolve depending on the interest of the group.
 - A. **What questions do you have?** – *Ask everyone to pose their initial questions to collect input and note that will attempt to answer unanswered questions throughout the discussion. Simple questions can be answered by resources in the room if available, others can be noted and answered after the meeting.*
 - B. **What is resonating most with you? What still needs improvement?** – *go through each of the topics below (organized on the Word Doc). Can pause to answer related questions from the previous section if related to topics below. If participants go off topic note takers can take notes on the additional comments sheet.*
 - Building design, land use
 - Transportation (streets, bike paths, traffic, parking)
 - Public Space (parks, green space, plazas)
 - Infrastructure, district utilities, green design
 - Historic context
 - Planning process
 - (For all other topics such as Affordable Housing, Anti-Displacement, and Jobs/Education, please submit comments/questions using the online feedback form or email staff)
 - C. **Next Steps**– pull up Next Steps / Resources page at the end of the small group discussion to remind participants where they can to send additional questions.

NOTETAKERS INSTRUCTIONS:

1. **Screen share the Word Doc for live note taking** – all questions and comments will be recoded on the Word doc which is organized by topics below.
2. **Have the Google Visual Aid slides PDF loaded and ready to share if needed as a resource** – Google staff/ reps to identify which slide to access as needed. Google staff/ reps will also be able to share screen to share the visual aid as well, that is organized by the following:
 - Framework Plan
 - Example from DSG showing building design
 - Transportation network
 - Open space plan
 - District utility plan
 - List of allowable uses
3. **Follow along and take notes following the facilitated prompts**

Additional prompts in back pocket if needed to spur conversation (Diridon team to provide specific questions by topic to Lori by Monday morning)

John Tu –

- What places in San Jose or in bay area do enjoy most and what about those places would like to see considered or incorporated into the project?
- Is there something in this application that you are unclear about?

Group #XX: Downtown West Community Meeting

Group Discussion Instructions

Basic ground rules:

- Use the RAISE HAND feature if you want to contribute and the facilitator will unmute/lower their hand when its your turn
- Be respectful – personal attacks will not be permitted
- Share the floor – keep questions and comments concise to allow everyone opportunities to share

For your questions:

- Staff and resources in the room may jump in to help answer if they can
- We will also provide answers to questions we receive tonight in the meeting summary we will post online after the meeting
- Answers will be brief to make room for community participation

Next Steps:

- Visit <https://www.diridonsj.org/fall2020-google/#Share-Voice> to submit questions and comments
- See www.diridonsj.org/fall2020 for additional community engagement events and public meetings occurring this fall

Group #XX: Downtown West Community Meeting

What Questions do you have about the Downtown West plan?

- Type the notes here.
 - *Can type in answers to questions in italics*

Group #XX: Downtown West Community Meeting

Building and Land Use

What resonates most with you?	What needs improvement?
<i>Type the notes here. To add more cells, right click and select "Insert Row Below"</i>	

Group #XX: Downtown West Community Meeting

Transportation (streets, bike paths, traffic, parking)

What resonates most with you?	What needs improvement?
<i>Type the notes here. To add more cells, right click and select "Insert Row Below"</i>	

Group #XX: Downtown West Community Meeting

Public Space (parks, green space, plazas)

What resonates most with you?	What needs improvement?
<i>Type the notes here. To add more cells, right click and select "Insert Row Below"</i>	

Group #XX: Downtown West Community Meeting

Infrastructure, District Utilities, Green Design

What resonates most with you?	What needs improvement?
<i>Type the notes here. To add more cells, right click and select "Insert Row Below"</i>	

Group #XX: Downtown West Community Meeting

Historic Context

What resonates most with you?	What needs improvement?
<i>Type the notes here. To add more cells, right click and select "Insert Row Below"</i>	

Group #XX: Downtown West Community Meeting

Planning Process

What resonates most with you?	What needs improvement?
<i>Type the notes here. To add more cells, right click and select "Insert Row Below"</i>	

Group #XX: Downtown West Community Meeting

Additional Comments

- Type the notes here. Each question will populate in 3 columns.

Group #XX: Downtown West Community Meeting

Next Steps and Resources:

- Visit <https://www.diridonsj.org/fall2020-google/#Share-Voice> to submit questions and comments
- See www.diridonsj.org/fall2020 for additional community engagement events and public meetings occurring this fall
- Email shannon.hill@sanjoseca.gov for Draft Environmental Impact Report comments

Project information: www.sanjoseca.gov/googleproject

For your convenience, the project team has listed key City Staff contacts for the project sorted by specialty.

Specialty	Name	Email
General Project	James Han	james.han@sanjoseca.gov
Environmental Review	Shannon Hill	shannon.hill@sanjoseca.gov
Utilities/Infrastructure	Vivian Tom	vivian.tom@sanjoseca.gov
Transportation Analysis	Manjit Banwait	manjit.banwait@sanjoseca.gov
Open Space/Parks	Larissa Sanderfer	larissa.sanderfer@sanjoseca.gov
DOT Roadway Analysis	Florin Lapustea	florin.lapustea@sanjoseca.gov
Transportation Planning	Eric Eidlin	eric.eidlin@sanjoseca.gov
Community Engagement	Lori Severino	lori.severino@sanjoseca.gov
Media inquiries	Cheryl Wessling	cheryl.wessling@sanjoseca.gov



Downtown West Update

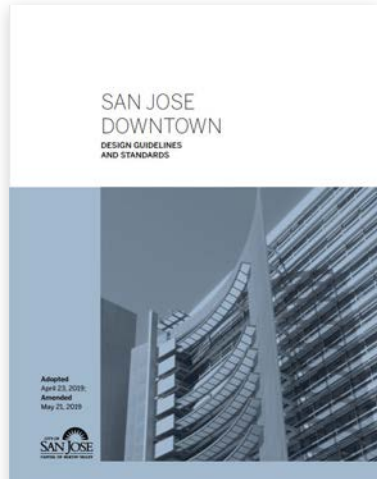
Community Meeting Visuals
10/19/2020

Google

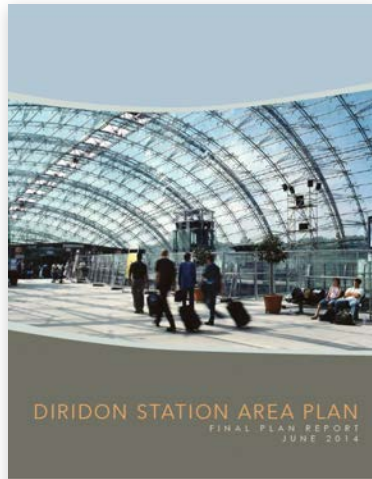
San José

DOWNTOWN WEST

Building on City's Plans



Downtown Design Guidelines



Diridon Station Area Plan

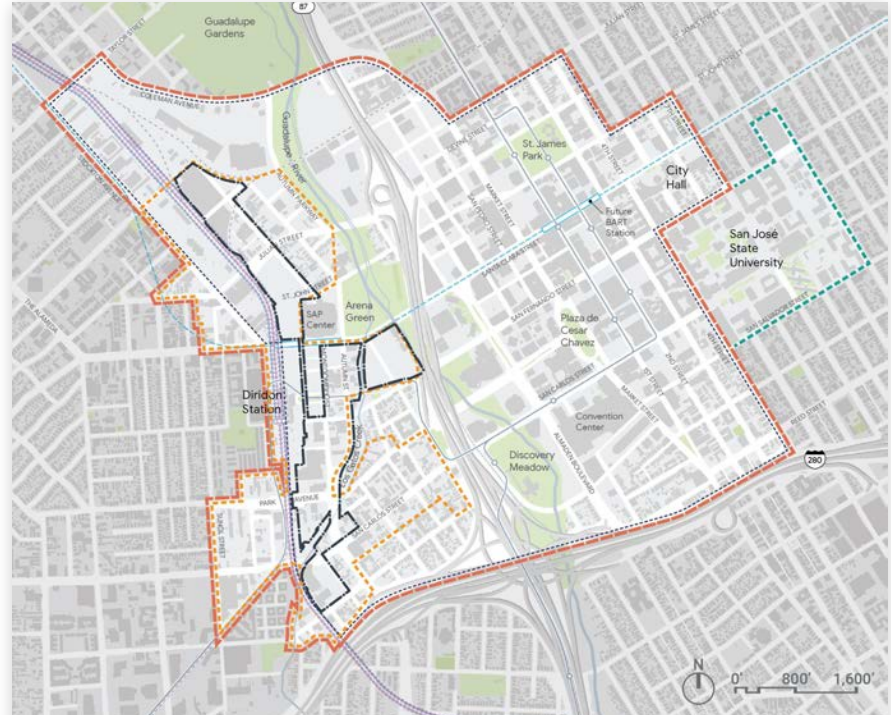


FIGURE 1.3: Planning context

Source: *Downtown Design Guidelines*, 2019.

- Downtown Design Guidelines boundary
- - - Downtown Growth Area boundary
- - - Diridon Station Area Plan boundary
- - - San José State University
- - - Downtown West Project boundary

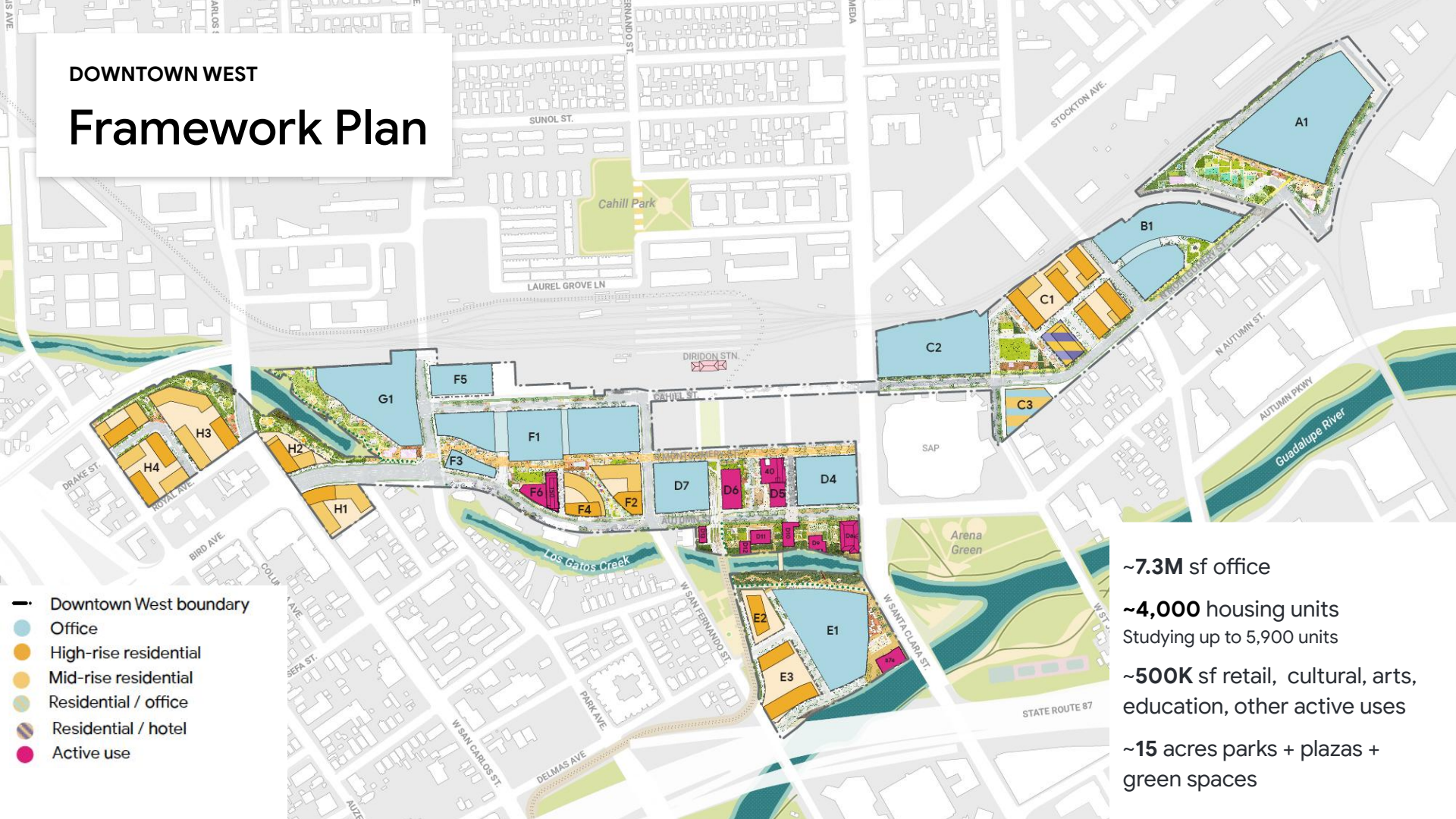
DOWNTOWN WEST

Site Location



DOWNTOWN WEST

Framework Plan

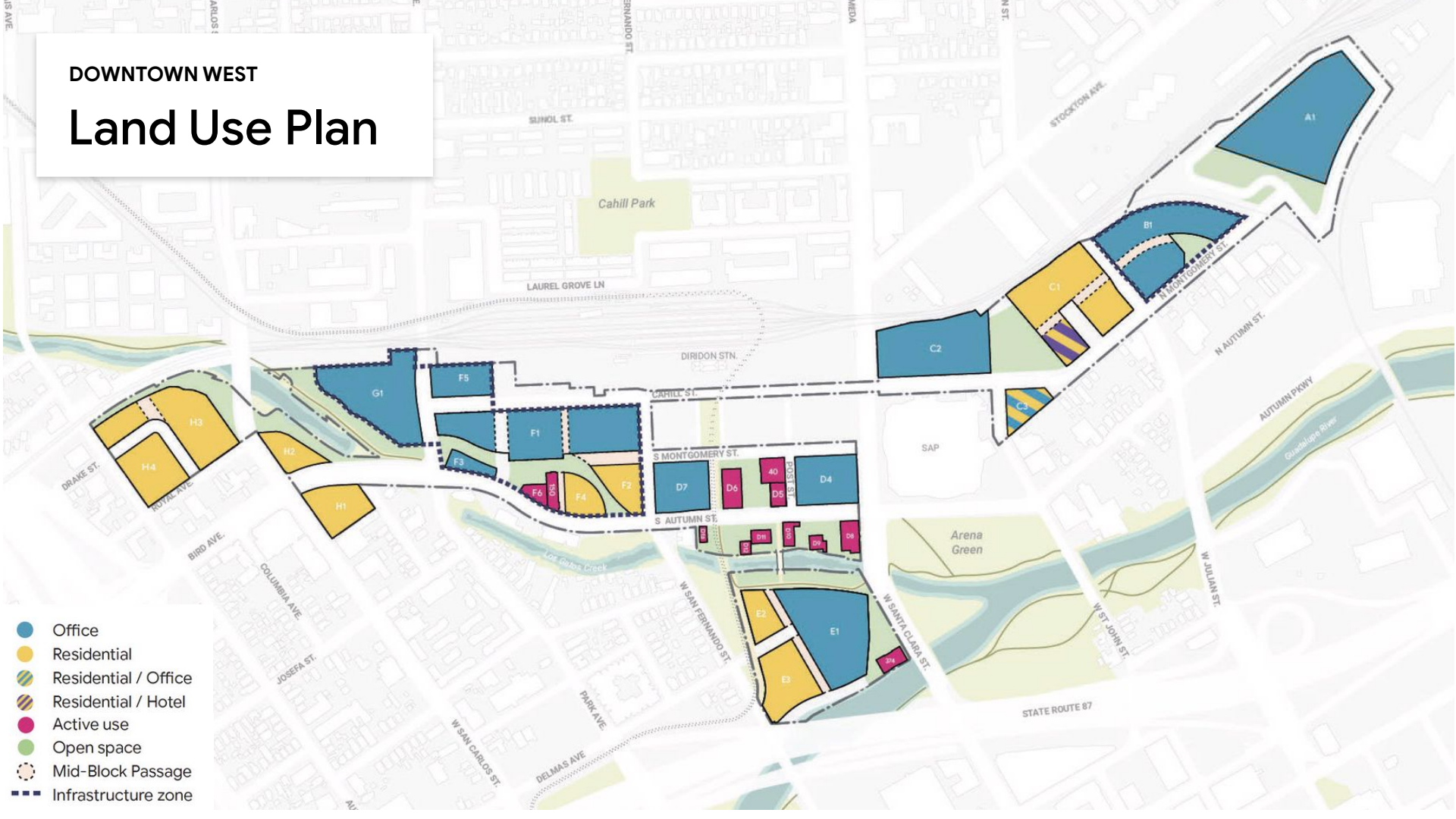


- Downtown West boundary
- Office
- High-rise residential
- Mid-rise residential
- Residential / office
- Residential / hotel
- Active use

~7.3M sf office
~4,000 housing units
Studying up to 5,900 units
~500K sf retail, cultural, arts, education, other active uses
~15 acres parks + plazas + green spaces

DOWNTOWN WEST

Land Use Plan



- Office
- Residential
- Residential / Office
- Residential / Hotel
- Active use
- Open space
- Mid-Block Passage
- Infrastructure zone

DOWNTOWN WEST

Land Use Table

DOWNTOWN WEST PLANNED DEVELOPMENT ZONING DISTRICT USE REGULATIONS

Table 4.01.1 Downtown West Planned Development Zoning District Use Regulations

RESIDENTIAL		
Residential GP		
Residential shelter		C 10*
Live/work uses		p 10*
Residential, multiple dwelling		p 10*
Co-living community		p 10*
Residential care facility for seven or more persons		C 10*
Residential services facility, for seven or more persons		C 10*
Hotel supportive housing		C 10*
Single room occupancy (SRO) living unit facility		S 10*
Single room occupancy (SRO) residential hotel		S
Residential Accessory Uses GP		
Accessory buildings and accessory structures		p 10*
OFFICE		
Offices and Financial Services		
Offices, business and administrative (large format) +		p
Research and development		p
ACTIVE USES+		
Offices and Financial Services		
Offices, business and administrative (small format) +		p
Automatic teller machine		p
Business support use		p
Financial services		p
Retail bank		p
General Retail		
Alcohol, off-sales - beer and/or wine only		A*/C
Alcohol, off-sales - full range of alcoholic beverages		A*/C
Alcohol, off-sales - as incidental to a winery, brewery, or distillery		A*
Food, beverages, and groceries		p
Outdoor vending		P*/A*
Outdoor vending - fresh fruits and vegetables		p
Retail bakery		p
Retail art studio		p

ACTIVE USES+ (CONTINUED)		
General Retail (Continued)		
Retail sales, goods, and merchandise		p
Seasonal sales		p
Taproom or tasting room in conjunction with a winery, brewery, or distillery		A*
Taproom or tasting room with off-sale of alcohol		A*
Winery, Brewery, Distillery		p
Innovation space and Maker Space+		p
Agriculture		
Certified farmers' market		A*/S
Certified farmers' market, small		p
Education and Training		
Day care center		p
Instructional art studios		p
Private instruction, personal enrichment		p
School, elementary - grades K - 8 (public or private)		C
School, secondary - grades 9 - 12 (public or private)		C
School, post-secondary		p
School, trade and vocational		p
Entertainment and Recreation Related		
Arcade, amusement game		p
Health club, gymnasium		p
Lighting display		A*
Movie theater		p
Live Entertainment+		P*/S
Poolroom/billiards establishment		p
Private club or lodge		p
Recreation commercial/indoor		p
Food Services		
Banquet - facility		p
Cafeterias		p
Commercial kitchen		p
Drinking establishments		A*/S
Drinking establishment in conjunction with a winery, brewery, or distillery		A*
Drinking establishments with an approved maximum occupancy load of over 250 persons and that operate between 12:00 midnight and 6:00 a.m.		C
Drinking establishments interior to a full-service hotel or motel with 75 or more guest rooms		p
Public eating establishments		p
Public eating establishment in conjunction with a winery, brewery, or distillery		p
General Services		
Laundromat		p
Maintenance and repair of small household appliances		p
Dry cleaner		p
Nursery, Plant		p
Personal services		p
Printing and publishing		p
Health and Veterinary Services		
Animal grooming		p
Animal boarding, indoor		p
Emergency ambulance service		C
Hospital/in-patient medical facility		C
Medical or dental clinic/out-patient facility		p
Office, Medical		p
Veterinarian		p
Historic Reuse		
Historic landmark structure reuse		S
Public, Quasi-Public and Assembly Uses		
Church/religious assembly		p
Information center		p
Museums and libraries		p
Short term parking lot for uses or events other than on-site		p
Radio and television studios		p
HOTEL		
General Services		
Bed and breakfast inn		p
Hotel or motel		p
LIMITED-TERM CORPORATE ACCOMMODATIONS		
Limited-term corporate accommodations+		p
EVENT/CONFERENCE CENTER		
Event/conference center +		p
Auditorium+		P*/A*

INFRASTRUCTURE		
District Systems+		p
Recycling Uses		
Reverse vending machine		S
Small collection facility		S
Transportation and Communication		
Community television antenna systems		p
Wireless communications antenna		p
Wireless communications antenna, building mounted		p
Private electrical power generation facility		p
Solar photovoltaic power system		p
Stand-by/backup facilities that do not exceed noise or air standards		p
Temporary stand-by/backup generators		p
Vehicle Related Uses		
Fuel service station or charge station, no incidental service or repair		p
LOGISTICS/WAREHOUSE		
Logistics hub+		p
OPEN SPACE		
Public, Quasi-Public and Assembly Uses		
Parks, playgrounds, or community centers		p
Open space+		p
Open space accessory buildings+		p
Accessory structures		p
Outdoor art		p

Legend

- P Permitted use
- C Conditional use: the shall require approval of a planned development permit.
- S Special use: they shall require approval of a planned development permit.
- 10* Conformance with General Plan land use restrictions for residential
- A Administrative Permit
- A*/ Uses authorized upon issuance of an Administrative Permit that incorporates the applicable conditions of approval identified on Sheet 4.02. If an Administrative Permit is not issued, a Conditional Use Permit or Special Use Permit shall be required as identified in Table 20-140.
- P*/ Uses that are Permitted if the applicable criteria identified on Sheet 4.02 are met, if the applicable criteria on Sheet 4.02 is not met, an Administrative Permit or Special Use Permit shall be required as permitted in the table.
- + New use as defined in indicated uses text on this sheet

Note: In instances when two designations are stated, the asterisk shall apply if conditions on Sheet 4.02 are met.

VISION

Integrated Downtown West



- ~ 7.3 M sf Office
- 4,000 Housing Units
(studying up to 5,900 units)
- ~ 500 K sf Active Use (Retail, Cultural, Arts, Education, and Other Active Uses)
- ~ 15 acres Parks + Plazas + Green Spaces

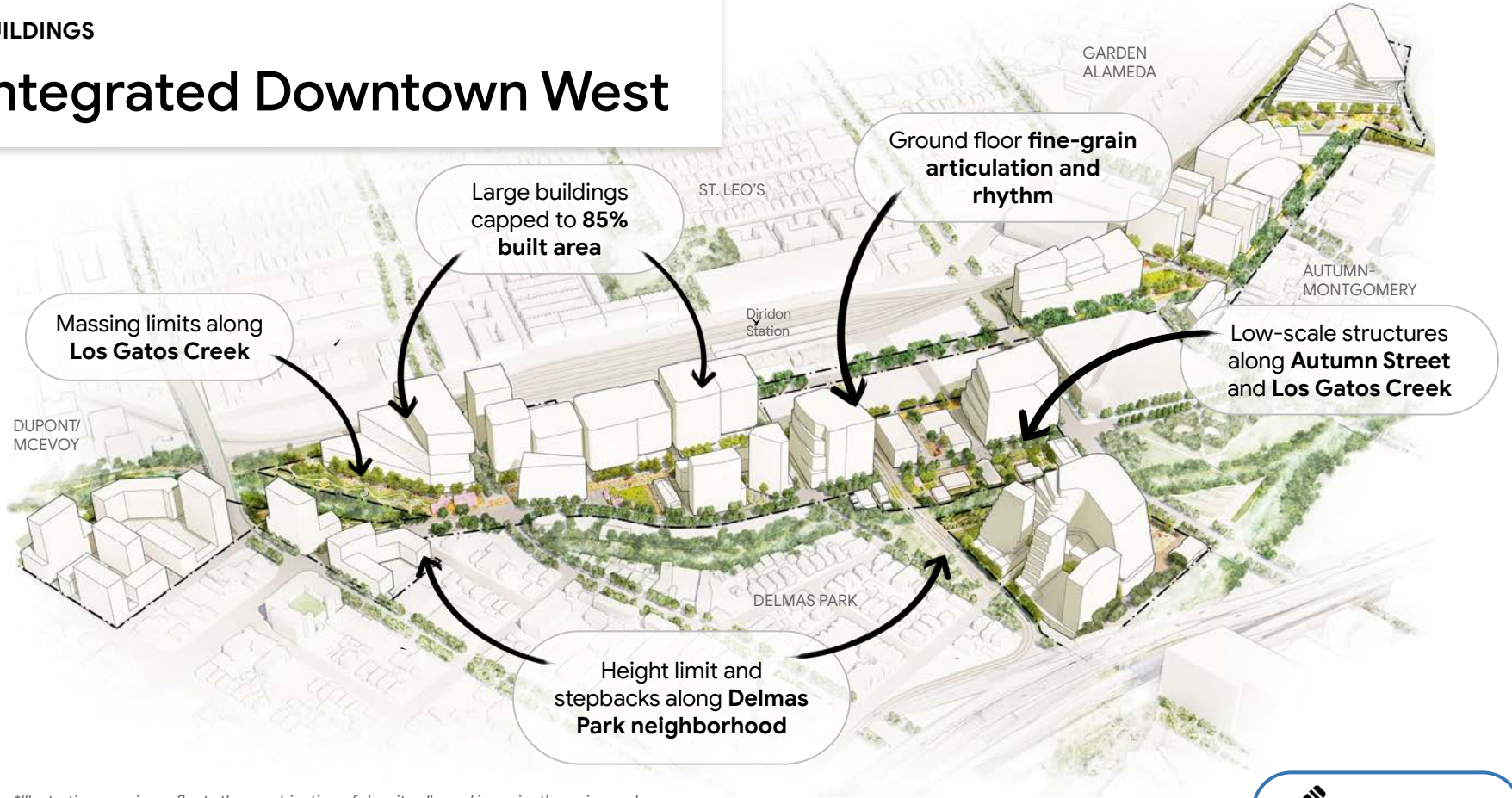
**Illustrative massing reflects the combination of density allowed in project's zoning and applicable Downtown West design standards and guidelines*



ILLUSTRATION

BUILDINGS

Integrated Downtown West



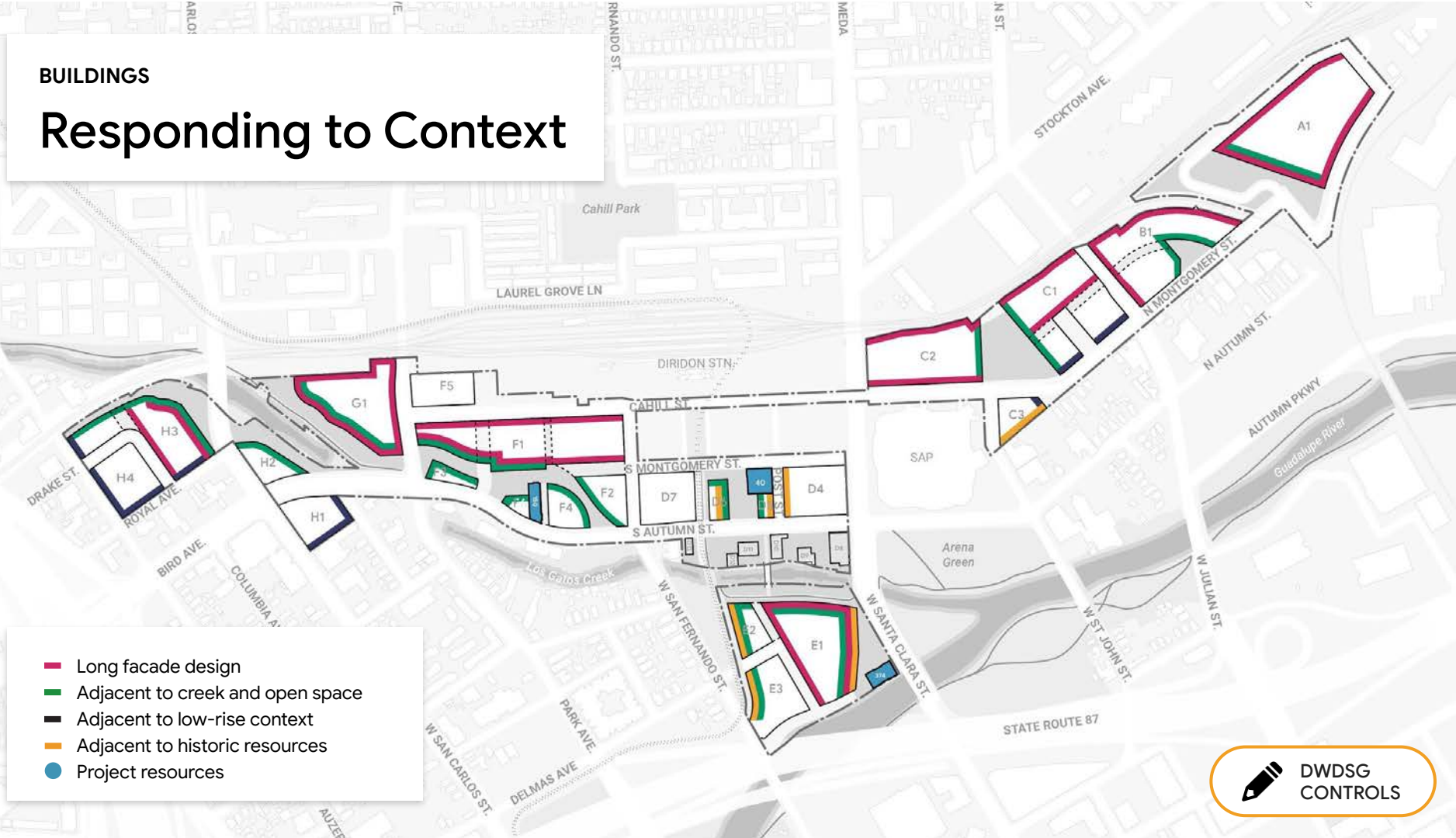
**Illustrative massing reflects the combination of density allowed in project's zoning and applicable Downtown West design standards and guidelines*



ILLUSTRATION

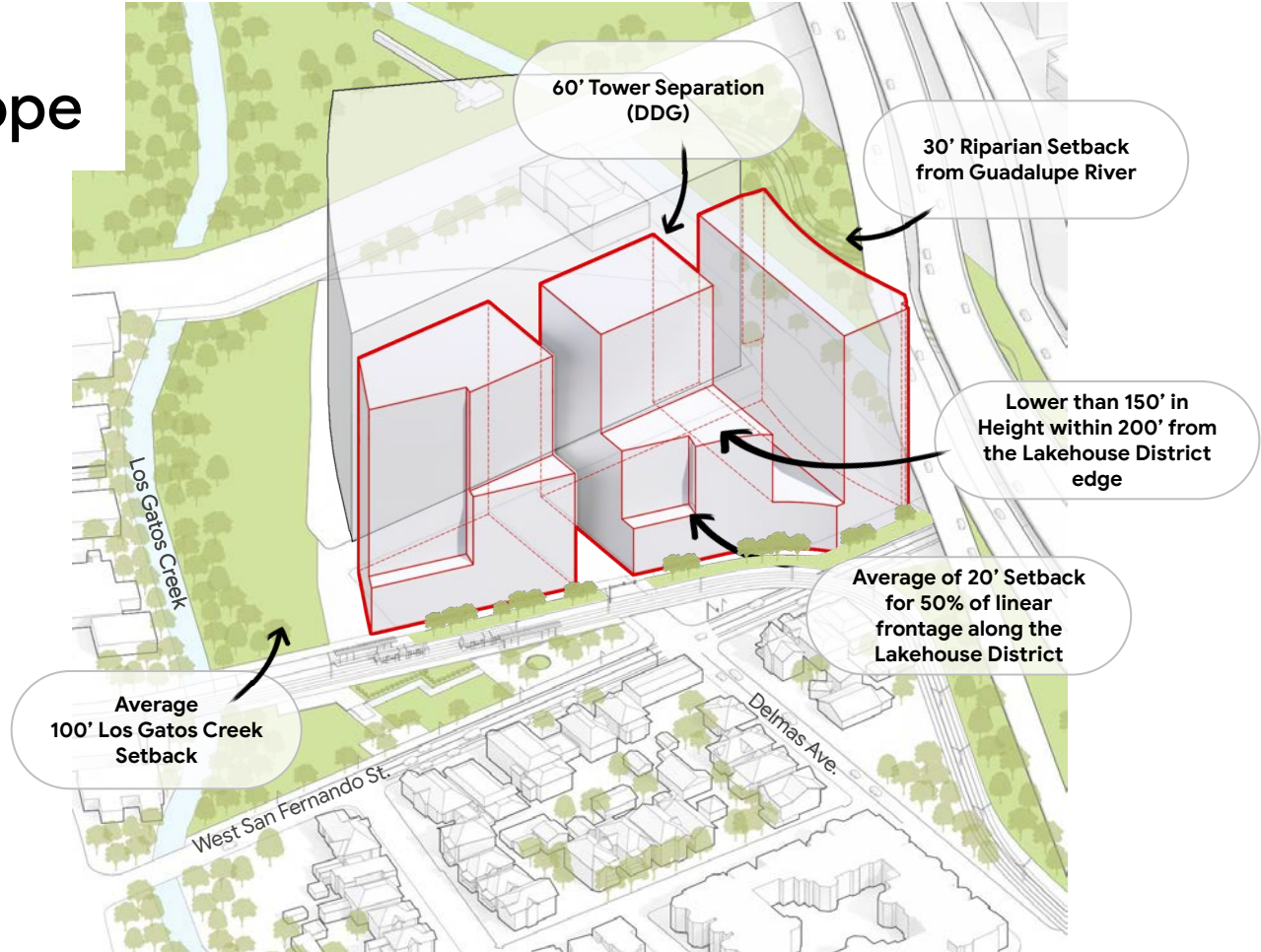
BUILDINGS

Responding to Context



BUILDINGS EXAMPLE

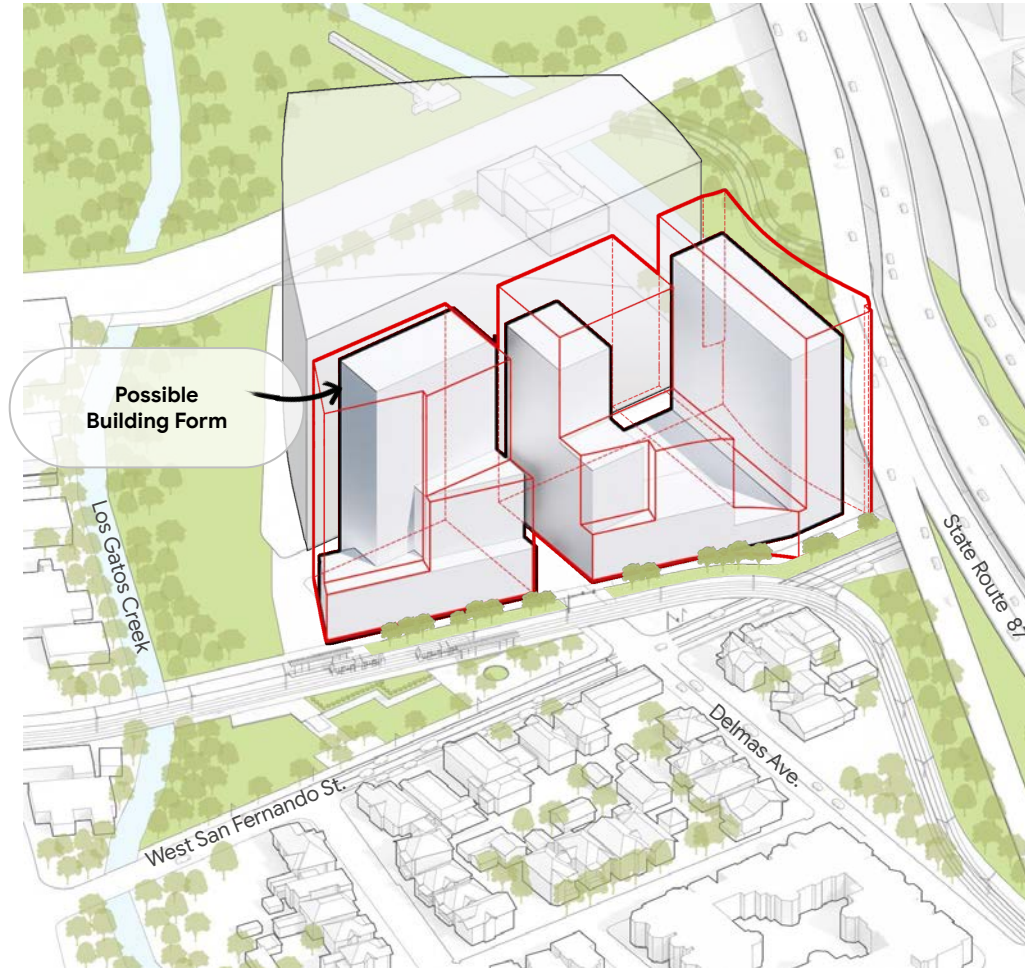
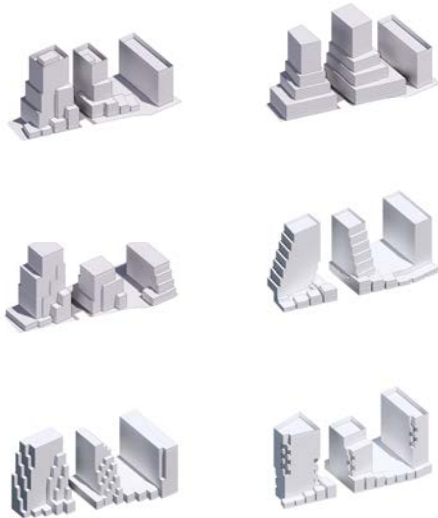
Buildable Envelope



**Illustrative massing*

BUILDINGS EXAMPLE

Possible Form



**Illustrative massing*



Historic adjacency 5-degree massing reduction

15% of building shaping on long-facade

Architectural height reference + cornice articulation (DDG)

Preferred materials

Bird-safe glass (DDG)

70% Transparency

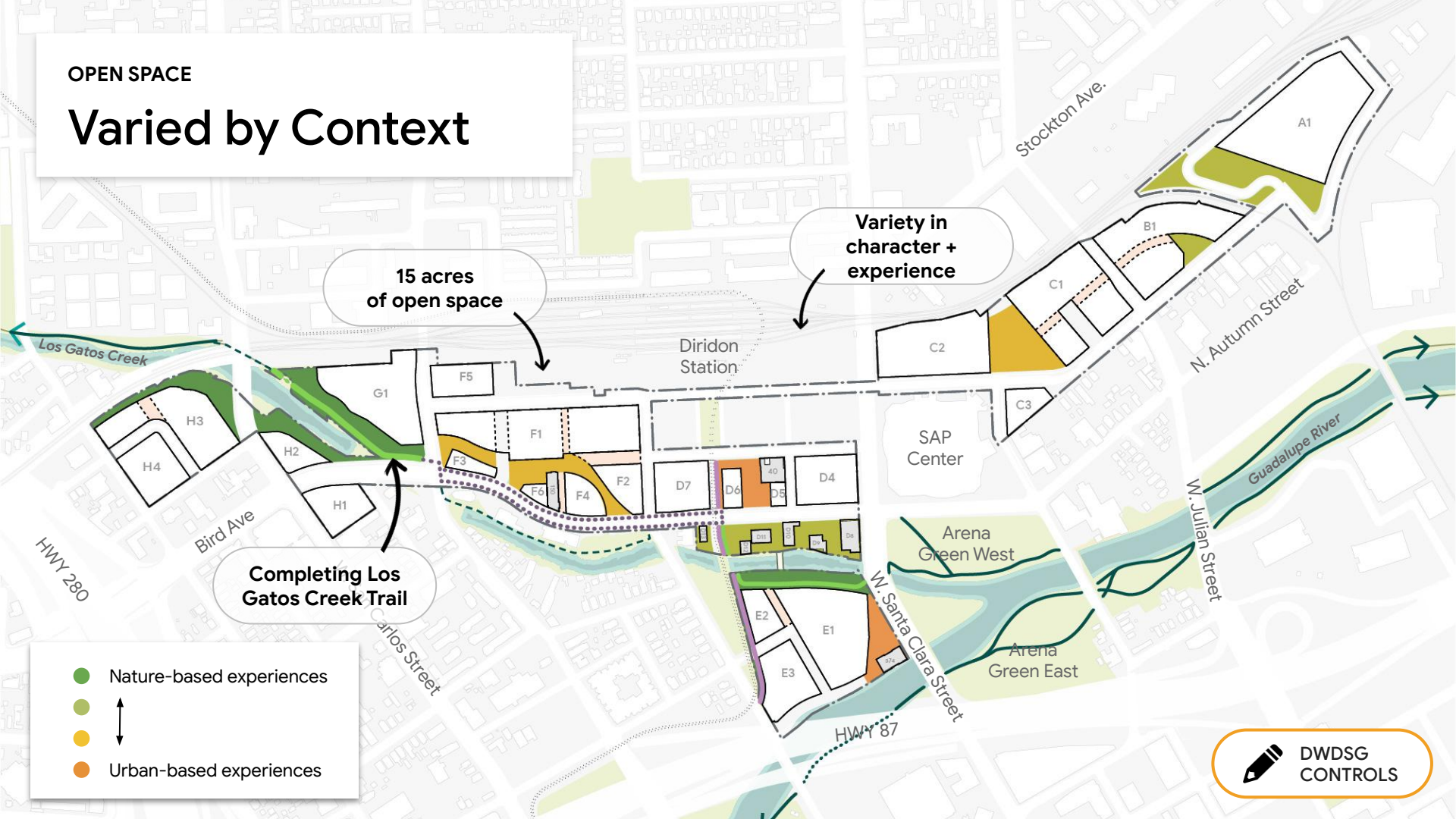
30% Active Use

Rehabilitation of historic San José Water Company building



OPEN SPACE

Varied by Context



15 acres of open space

Variety in character + experience

Completing Los Gatos Creek Trail

- Nature-based experiences
- ↕
- Urban-based experiences

OPEN SPACE

Programs + Elements

Range across all open spaces



RIPARIAN PLANTING



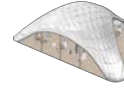
ECOLOGICAL DEMONSTRATION



LOS GATOS CREEK MULTI-USE TRAIL



COMMUNITY GARDEN



PAVILION STRUCTURE



OUTDOOR PERFORMANCE SPACE



FLEXIBLE LAWN



PROMENADE



UNDERSTORY PLANTING



CREEK OVERLOOK / VIEWING PLATFORM



DOWNTOWN TO DIRIDON STATION SHARED-USE PATH



ART



DOG RUN OR DOG PARK



EVENT, ROTATING VENDOR, OR FOOD TRUCK ACCESS



INFORMAL RECREATION



PLAZA



RE-OAKING



CREEK FOOTBRIDGE



WALKING PATH



CANOPY STRUCTURE



PICNIC OR BARBEQUE



WATER FEATURE



OUTDOOR PROGRAM AREA



PROGRAM DECK



TREE GROVE



BOARDWALK



NATURE PLAY



KIOSK



PLAYGROUND



DWDSG
CONTROLS

OPEN SPACE

Programs + Elements

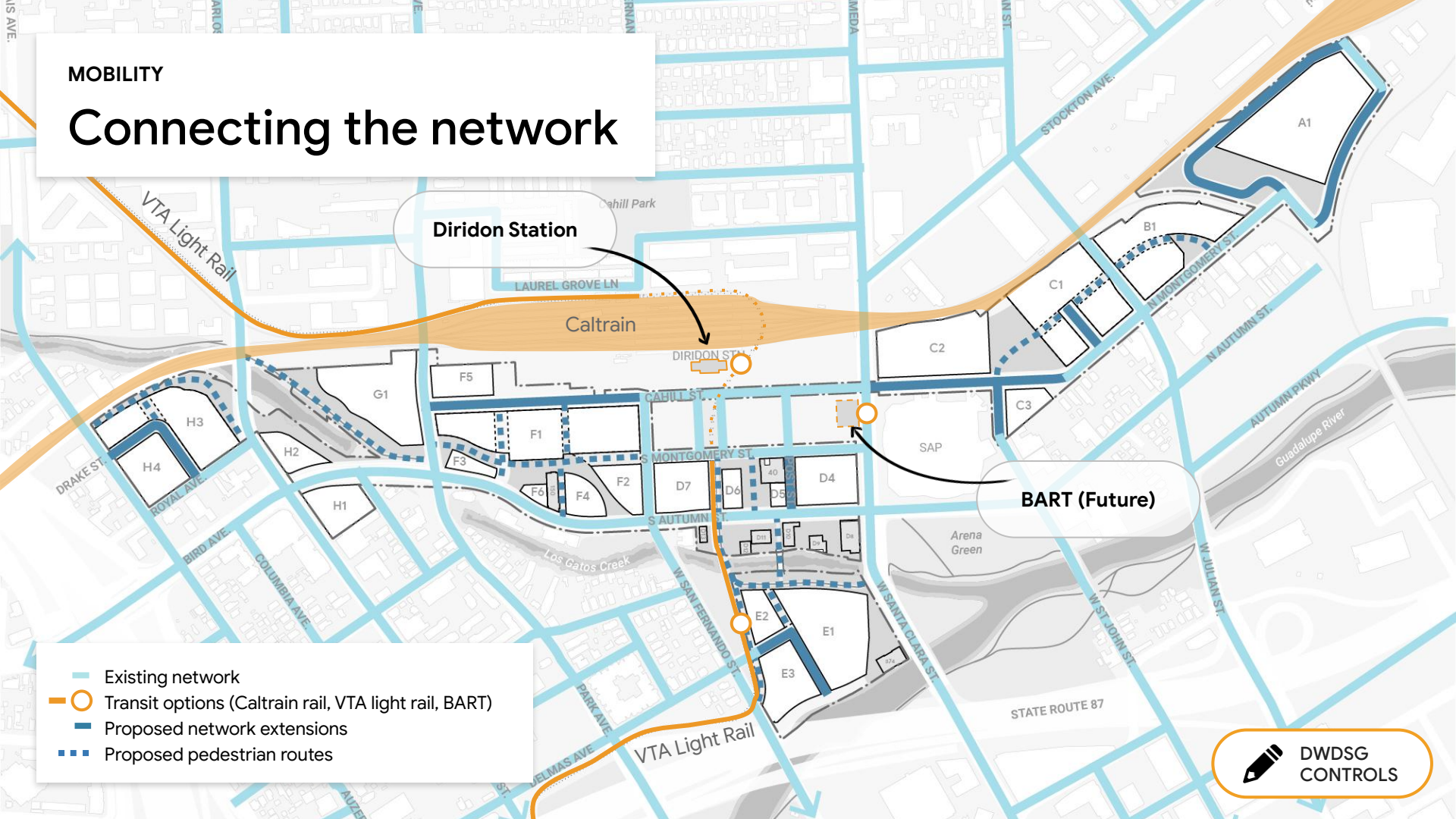
● Required programmatic element ○ Complementary programmatic element

PROGRAMMATIC ELEMENTS	LOS GATOS CREEK CONNECTOR	LOS GATOS CREEK PARK	THE MEANDER	SOCIAL HEART	CREEKSIDE WALK AT S. AUTUMN STREET	LOS GATOS CREEK EAST	GATEWAY TO SAN JOSE	ST. JOHN TRIANGLE	NORTH MONTGOMERY POCKET PARK	NORTHEND PARK
Promenade			●							●
Plaza	○	●	●	○			●	●		●
Flexible Lawn			●	○				●		●
Program Deck		●	●	●	○			●		○
Outdoor Program Area		○	○	●	○	○	○		●	●
Informal Recreation		○						○		●
Event, Rotating Vendor, and Food Truck Access			●	○			●	●		●
Water Feature			●	○					○	
Neighborhood Amenities	○	○	○					○		
Makerspace										○
Nature Play	●	○								
Art		○	●	○		○		○	○	○
Pavilion Structure		○			○		○	○		○
Canopy Structure			○			○		●	○	
Kiosk		○	○	○		○	○	○		○
Outdoor Performance Area							○	●		
Los Gatos Creek Multi-Use Trail		●			●	●				
Downtown to Diridon Station Shared-Use Path				●	●	●				
Walking Path	●	●								
Boardwalk					●	●				
Creek Footbridge					●	●				
Creek Overlook / Viewing Platform		●				●				
Tree Grove			○					○	●	●
Ecological Demonstration		●								○
Planting Strategy	●	●	●	●	●	●	●	●	●	●
NUMBER OF COMPLEMENTARY PROGRAMMATIC ELEMENTS REQUIRED	1 OF 2	4 OF 7	3 OF 5	4 OF 6	2 OF 3	2 OF 4	2 OF 4	3 OF 6	1 OF 3	4 OF 6



MOBILITY

Connecting the network



Diridon Station

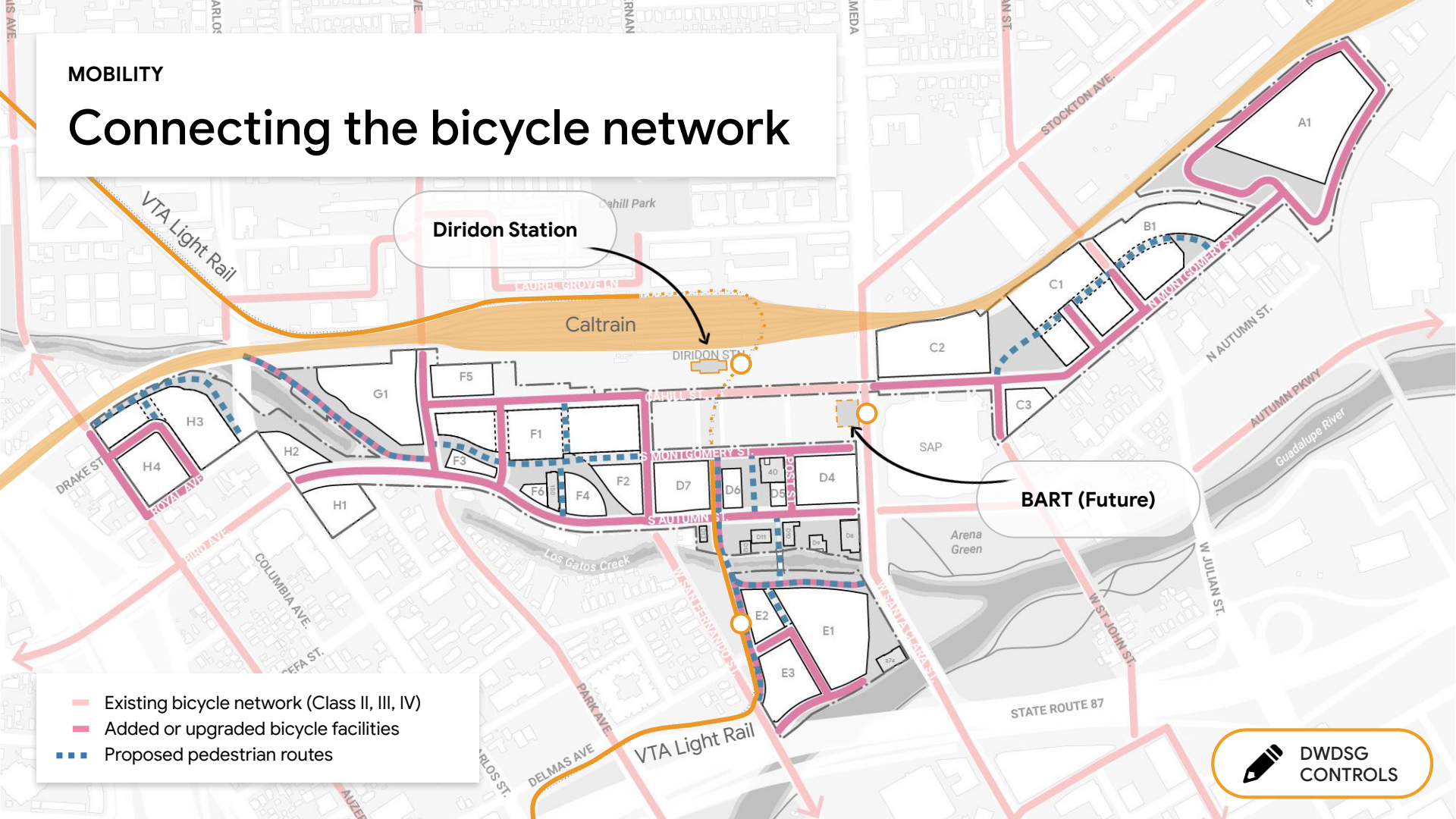
Caltrain

BART (Future)

- Existing network
- Transit options (Caltrain rail, VTA light rail, BART)
- Proposed network extensions
- Proposed pedestrian routes

MOBILITY

Connecting the bicycle network



Diridon Station

Caltrain

DIRIDON ST.

BART (Future)

- Existing bicycle network (Class II, III, IV)
- Added or upgraded bicycle facilities
- Proposed pedestrian routes

INFRASTRUCTURE

Leveraging District Utility Systems

