

From: [Mendez, Zacharias](#)
To: [Bethany Windle](#)
Subject: Re: Trail Alignment @ San Carlos
Date: Friday, June 12, 2020 9:31:58 AM
Attachments: [LGCT_35PercentPlans_2014-07-18.pdf](#)

Hey Bethany,

Just following up again quickly to provide the design documents for the planned trail under-crossing on the west side of the creek. Yves wanted me to let you know that these 35% plans accurately reflect the under-crossing placement and linking trail to Montgomery Street. At time of preparing these plans, the City owned the parcel and the alignment along the creek bank was required by existing SJFD operations. We can not alter the under-crossing placement per these plans, but welcome aligning to a more preferred trail alignment to reach Montgomery Street. Our plans are now developed to the 100% stage in order to obtain regulatory agency reviews.

Let me know if you have any questions! Hope you have a good weekend.

Thanks,
Zak

ZACHARIAS MENDEZ | Parks Planner
Parks, Recreation and Neighborhood Services
City Hall | Tel: 408.793.4171
200 East Santa Clara Street, San José, CA 95113
Building Community Through Fun
sanjoseca.gov/prns | www.vivcallesj.org

From: Bethany Windle <bethanywindle@google.com>
Sent: Thursday, June 11, 2020 4:25 PM
To: Mendez, Zacharias <Zacharias.Mendez@sanjoseca.gov>
Subject: Re: Trail Alignment @ San Carlos

[External Email]

Hi Zak,

This is great, thank you. I will share with the mobility team for review and questions. We appreciate the good discussion and solutions-based approach today. Will keep it going!

Have a good evening,
Bethany

On Thu, Jun 11, 2020 at 7:01 PM Mendez, Zacharias <Zacharias.Mendez@sanjoseca.gov>
wrote:

Hey Bethany,

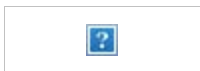
Following up on our trail conversation today, attached is a document Yves gave me that provide some thoughts on the how the crossing at San Carlos might work.

Let me know what questions you have.

Thanks,
Zak

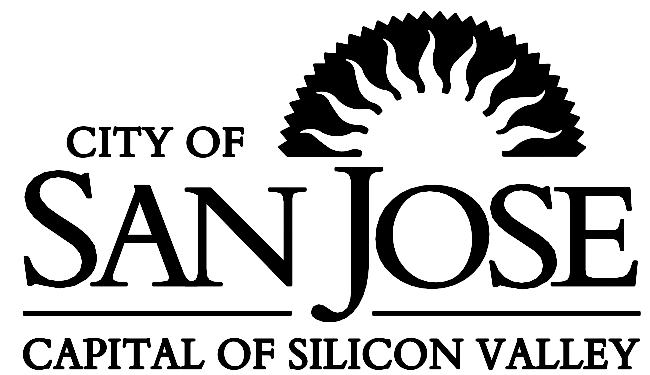
ZACHARIAS MENDEZ | Parks Planner
Parks, Recreation and Neighborhood Services
City Hall | Tel: [408.793.4171](tel:408.793.4171)
200 East Santa Clara Street, San José, CA 95113
Building Community Through Fun
sanjoseca.gov/prns | www.vivcallesj.org

--



Bethany
Windle | Project
Manager
Real Estate Development
Sunnyvale, CA |
650.676.1534

This message is from outside the City email system. Do not open links or attachments from untrusted sources.



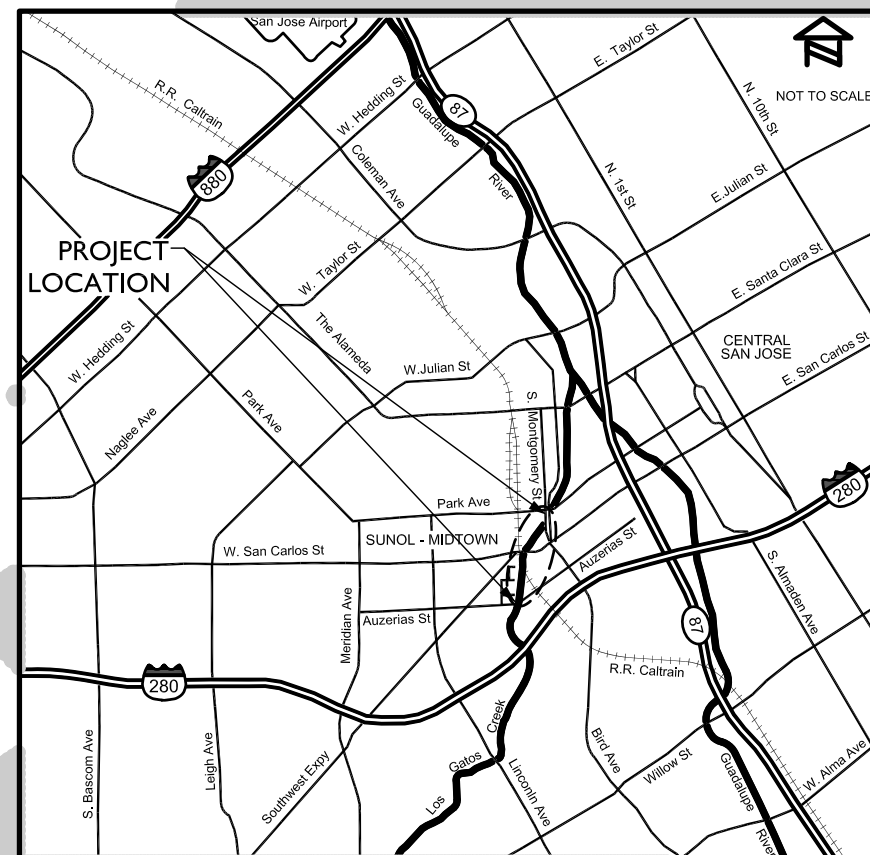
DEPARTMENT OF PUBLIC WORKS
CITY FACILITIES ARCHITECTURAL SERVICES DIVISION
PLANS FOR THE CONSTRUCTION OF
6708 - LOS GATOS CREEK TRAIL

REACH 5B/C
(AUZERAIS AVENUE TO MONTGOMERY STREET)

INDEX TO DRAWINGS

NO.	SHEET
G-1	COVER SHEET
G-2	GENERAL ABBREVIATIONS, LEGEND, AND GENERAL NOTES
G-3	KEY MAP AND SURVEY CONTROL
D-1 TO D-2	DEMOLITION PLAN
D-3	TREE INVENTORY
X-1 TO X-3	TYPICAL TRAIL CROSS SECTIONS
C-1 TO C-4	PLAN AND PROFILE
CD-1 TO CD-4	MISCELLANEOUS CONSTRUCTION DETAILS
S-1 TO S-2	RETAINING WALL GENERAL PLAN
S-3 TO S-11	STRUCTURAL DETAILS
CR-1	CREEK PREPARATION AND DEWATERING PLAN
CR-2	MATERIALS HANDLING
CR-3 TO CR-4	GRADING PLAN
CR-5 TO CR-7	CREEK HABITAT IMPROVEMENT PLAN DETAILS
CR-8 TO CR-9	CREEK PROFILE AND SECTIONS
CR-10	BANK STABILIZATION
CR-11 TO CR-12	FISHERY ELEMENT DETAILS
CR-13	CREEK POST-PROJECT EROSION CONTROL SHEET
SS-1 TO SS-3	TRAIL SIGNAGE AND STRIPING PLAN AND DETAILS
L-1	TRAILHEAD PLAN
L-2	SIDEWALK IMPROVEMENTS
L-3	IRRIGATION PLAN
L-4	PLANTING PLAN
L-5 TO L-7	LANDSCAPE DETAILS
E-1 TO E-6	ELECTRICAL PLAN AND DETAILS
P-1 TO P4	STORMWATER POLLUTION PREVENTION PLAN AND DETAILS

VICINITY MAP

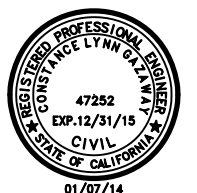


APPROVED BY:

DAVID SYKES
DIRECTOR OF PUBLIC WORKS

JULIE EDMONDS-MARES
DIRECTOR OF PARKS, RECREATION &
NEIGHBORHOOD SERVICES

Preliminary



CH2MHILL
1737 NORTH FIRST STREET, SUITE 300
SAN JOSE, CALIFORNIA 95112-4524
(408)436-4936

JUNE 2014
35% SUBMITTAL

GENERAL ABBREVIATIONS			
AB	AGGREGATE BASE	HMA	HOT MIX ASPHALT
AC	ASPHALTIC CONCRETE	HWY	HIGHWAY
ADJ	ADJUSTABLE	ID	INSIDE DIAMETER
AGG	AGGREGATE	INV	INVERT
ALUM	ALUMINUM	JB	JUNCTION BOX
APPROX	APPROXIMATE	L	LENGTH
&	AND	LF	LINEAR FEET
∠	ANGLE	LOG	LIP OF GUTTER
ANOD	ANODIZED	LOL	LAYOUT LINE
ASPH	ASPHALT	LP	LOW POINT
@	AT	LT	LEFT
BC	BEGIN CURVE	MAINT	MAINTENANCE
BD	BOARD	MAX	MAXIMUM
BLDG	BUILDING	MET	METAL
BLKG	BLOCKING	MFR	MANUFACTURER
BM	BENCH MARK	MGS	MIDWEST GUARDRAIL SYSTEM
BOTT	BOTTOM	MH	MANHOLE
BU	BUILT-UP	MHW	MEAN HIGH WATER
BVC	BEGIN VERTICAL CURVE	MIN	MINIMUM
BW	BACK OF WALK	MSE	MECHANICAL STABILIZATION EARTH
C & G	CURB AND GUTTER	N or (N)	NORTHING OR NEW
CB	CATCH BASIN	NIC	NOT IN CONTRACT
CEM	CEMENT	NO	NUMBER
CER	CERAMIC	NTS	NOT TO SCALE
□	CHANNEL	OC	ON CENTER
CI	CAST IRON	OG	ORIGINAL GROUND
CJ	CONSTRUCTION JOINT	OH	OVERHEAD
☉	CENTER LINE	OHW	ORDINARY HIGH WATER
CL	CHAIN LINK	OPNG	OPENING
CLR	CLEAR	OPP	OPPOSITE
CMU	CONCRETE MASONRY UNIT	PC	POINT OF CURVATURE
CO	CLEANOUT	PCC	PORTLAND CEMENT CONCRETE
COA	CONDOMINIUM OWNERS ASSOCIATION	PCK	PENITENCIA CREEK
COL	COLUMN	PERM	PERMANENT
COMP	COMPOSITION	PL / R	PROPERTY LINE
CONC	CONCRETE	PLY	PLYWOOD
CONN	CONNECTION	PT	POINT OF TANGENCY, PRESSURE TREATED
CONT	CONTINUOUS	PVC	POLY VINYL CHLORIDE
CONTR	CONTRACTOR	PVI	POINT OF VERTICAL INTERSECTION
COTG	CLEAN OUT TO GRADE	PVMT	PAVEMENT
CP	CONTROL POINT	R	RADIUS
CSJ	CITY OF SAN JOSE	(R)	RELOCATED/REUSED
Ø	DIAMETER	RAB	RECYCLED AGGREGATE BASE
DEP	DEPRESSED	RCP	REINFORCED CONCRETE PIPE
DET	DETAIL	RD	ROAD, ROUND OR ROOF DRAIN
DF	DOUGLAS FIR	REC	RECESSED
DI	DRAIN INLET	REINF	REINFORCED/ING
DIM	DIMENSION	RES	RESILIENT
DOR	DOREL	RSP	ROCK SLOPE PROTECTION
DR	DRIVE	RT	RIGHT
DW	DRIVEWAY	RW	RETAINING WALL
DWG	DRAWING	R/W	RIGHT OF WAY
E	EASTING	RWD	REDWOOD
EA	EACH	RWL	RETAINING WALL LAYOUT LINE
EC	END CURVE	SCVWD	SCHEDULE
EJ	EXPANSION JOINT	SD	SANTA CLARA VALLEY WATER DISTRICT
ELEC	ELECTRICAL	SECT	SECTION
ELEV	ELEVATION	SF	SQUARE FOOT/FEET
ENCL	ENCLOSURE	SHLD	SHOULDER
EOP	EDGE OF PAVEMENT	SHT	SHEET
EQ	EQUAL	SIM	SIMILAR
ES	EXPANSION SHIELD	SJWC	SAN JOSE WATER COMPANY
ETW	EDGE OF TRAVELLED WAY	SOV	SHUT OFF VALVE
EVC	END VERTICAL CURVE	SPECS	SPECIFICATIONS
EW	EACH WAY	SQ	SQUARE
EXIST or (E)	EXISTING	ST	STREET
EXP	EXPANSION	STA	STATION
FB	FLAT BAR	STD	STANDARD
FD	FLOOR DRAIN	STL	STEEL
FDN	FOUNDATION	STRUCT	STRUCTURAL
FG	FINISHED GRADE	SUSP	SUSPENDED
FH	FIRE HYDRANT	SW	SIDEWALK
FIN	FINISH	T	TANGENT
FL	FLOW LINE	TBC	TOP BACK OF CURB
FLR	FLOOR	TEL	TELEPHONE
FOC	FACE OF CONCRETE	TOB	TOP OF BANK
FOM	FACE OF MASONRY	TOC	TOP OF CONCRETE
FTG	FOOTING	TOS	TOE OF SLOPE
FW	FRONT OF WALK	TOT	TOTAL
GA	GAUGE	TOW	TOP OF WALL
GALV	GALVANIZED	TYP	TYPICAL
GI	GALVANIZED IRON	UG	UNDERGROUND
GRD	GROUND OR GRADE	UON	UNLESS OTHERWISE NOTED
GV	GATE VALVE	VC	VERTICAL CURVE
GVCB	GATE VALVE IN CONCRETE BOX	VCP	VITREOUS CLAY PIPE
HB	HOSE BIB	VERT	VERTICAL
HC	HANDICAP	VIF	VERIFY IN FIELD
HDR	HEADER	VPI	VERTICAL POINT OF INTERSECTION
HDWD	HARDWOOD	W	WITH
HORIZ	HORIZONTAL	WD	WOOD
HP	HINGE POINT	WP	WORK POINT or WATERPROOF
HR	HOUR	WSE	WATER SURFACE ELEVATION
HT	HEIGHT	WWF	WELDED WIRE FABRIC
		YD	YARD

LEGEND			
PROPOSED		EXISTING	EXISTING
	RIGHT OF WAY	----	OVERHEAD ELECTRIC
	PROPERTY LINE	----	E-OVH
----	TOE OF FILL		STORM DRAIN
----	TOP OF CUT	----	SD
----	CONTROL LINE		SANITARY SEWER
----	EDGE OF PAVEMENT		SS
----	TEMPORARY CONSTRUCTION FENCE		WATER
----	LIMITS OF WORK		W
----	REMOVAL OF FENCE		TREE DRIP LINE
----	CL FENCE	----	
----	SECURITY FENCE		TREE ID NO.
----	FENCE		XXXX
○	DETAIL NUMBER		REMOVE TREE STUMP
○	SHEET NUMBER		TANGENT NUMBER
	HMA (TYPE A) PAVEMENT		CURVE NUMBER
	PCC PAVEMENT		GEOTECHNICAL BORING LOCATION
	AGGREGATE BASE		(1 TOTAL)
	ROCK SLOPE PROTECTION		SURVEY CONTROL POINT
	BIOSWALE		
			SURVEY MONUMENT
			FIRE HYDRANT
			SANITARY MANHOLE
			STORM MANHOLE
			STANDARD HOODED INLET
			WATER VALVE
			GAS VALVE

GENERAL NOTES	
<p>PRE-BID SITE VISIT</p> <p>CONTRACTOR IS ENCOURAGED TO VISIT THE PROJECT AREA IN ORDER TO FAMILIARIZE THEMSELVES WITH EXISTING CONDITIONS.</p> <p>SAFETY</p> <p>THE CONTRACTOR IS RESPONSIBLE TO MAINTAIN A SAFE AND SECURE SITE AT ALL TIMES.</p> <p>DAMAGE TO SYSTEMS TO REMAIN</p> <p>THE CONTRACTOR IS SOLELY RESPONSIBLE TO PROTECT ALL EXISTING FACILITIES TO REMAIN. ANY DAMAGED FACILITIES WILL BE REPAIRED OR REPLACED BY THE CONTRACTOR AT NO EXPENSE TO THE OWNER.</p> <p>EXISTING CONDITIONS</p> <p>ALL INFORMATION RELATING TO EXISTING CONSTRUCTION IS GIVEN AS BEING THE BEST INFORMATION AVAILABLE, BUT WITHOUT GUARANTEE OF ACCURACY. THE CONTRACTOR SHALL VERIFY ALL EXISTING CONDITIONS AND DIMENSIONS AT THE JOB SITE. ANY DISCREPANCIES REQUIRING MODIFICATION TO THE CONSTRUCTION DOCUMENTS SHALL BE REPORTED TO THE ENGINEER IMMEDIATELY. NO MODIFICATIONS SHALL BE MADE BY THE CONTRACTOR WITHOUT PRIOR APPROVAL FROM THE ENGINEER.</p> <p>CONTRACTOR'S EQUIPMENT</p> <p>CONTRACTOR SHALL COORDINATE WITH ENGINEER FOR CONSTRUCTION ACCESS, HOURS OF OPERATION AND RESTRICTIONS, STORAGE OF EQUIPMENT AND MATERIALS.</p>	<p>UTILITY SHUTDOWNS AND CONNECTIONS</p> <p>BEFORE THE SHUTDOWN OR TYING INTO ANY UTILITY, THE CONTRACTOR SHALL OBTAIN APPROVAL FROM THE ENGINEER AND COORDINATE WITH UTILITY COMPANIES.</p> <p>ROUTING</p> <p>CONTRACTOR SHALL USE PUBLIC STREETS FOR DELIVERIES. ANY ALTERNATIVE ROUTES SHALL BE APPROVED BY THE ENGINEER. PROTECT PUBLIC STREETS FROM BEING DAMAGED AND KEEP PUBLIC STREETS CLEAR AND CLEAN AT ALL TIMES.</p> <p>NOISE AND DUST CONTROL</p> <p>THE CONTRACTOR SHALL PROVIDE MEANS AND MATERIALS TO CONTROL DUST AND NOISE PER SPECIFICATIONS.</p> <p>CONSTRUCTION SCHEDULING</p> <p>CONTRACTOR SHALL COORDINATE CONSTRUCTION OPERATIONS WITH ENGINEER PRIOR TO SCHEDULING AND START OF THE WORK - CONTRACTOR SHALL PROVIDE PROTECTION TO ALL EXISTING AREAS WHICH ARE IN USE AND ARE ADJOINING THE WORK BUT ARE NOT PART OF THE WORK.</p> <p>EXISTING UTILITIES</p> <p>ALL INFORMATION RELATING TO EXISTING OVERHEAD AND UNDERGROUND UTILITIES IS GIVEN AS BEING THE BEST INFORMATION AVAILABLE BUT WITHOUT GUARANTEE OF ACCURACY. THE CONTRACTOR SHALL FIELD VERIFY ALL EXISTING UTILITY LOCATIONS PRIOR TO START OF CONSTRUCTION.</p>

Preliminary



1737 NORTH FIRST STREET, SUITE 300
SAN JOSE, CALIFORNIA 95112-4524
(408) 436-4936

DAVID SYKES
DIRECTOR OF PUBLIC WORKS

PROJECT TITLE:

DEPARTMENT OF PUBLIC WORKS
SAN JOSE, CALIFORNIA
City Facilities Architectural Services Division
LOS GATOS CREEK TRAIL
REACH 5B/C

REV	DATE	DESCRIPTION
△		
△		
△		
△		
△		
△		
△		

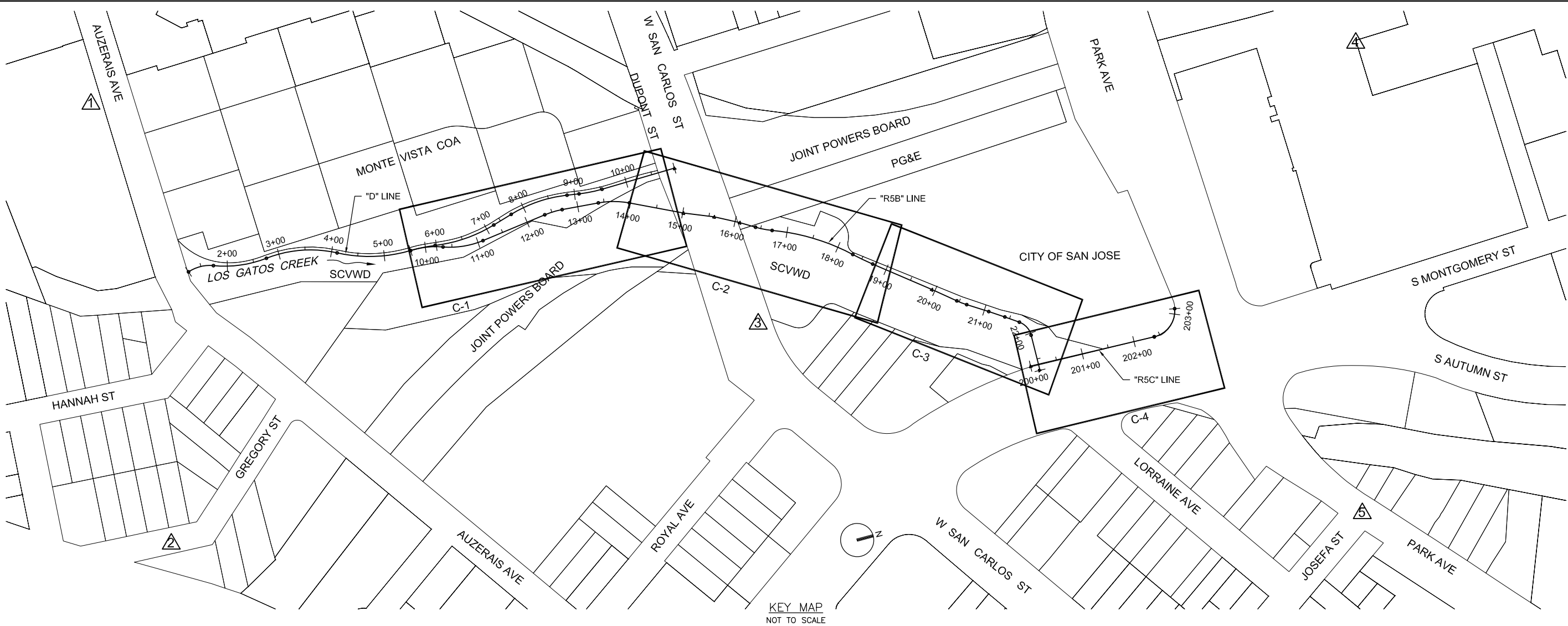
SCALE: AS-NOTED	DRAWN BY: J. CABECA
DATE: JULY 2014	CHECKED BY: D. VON RUEDEN
SECTION MANAGER: JAN PALAJAC	
CPHS ID NUMBER: XXXX	

SHEET TITLE:

GENERAL ABBREVIATIONS
LEGEND AND
GENERAL NOTES

SHEET NUMBER:			
G-2			
SHEET	X	OF	23

PLOT DATE: 07-17-14 14:55:41 LGCTR5B_C3.dwg



SURVEY CONTROL DATA					
NO.	NORTHING	EASTING	ELEVATION	DESCRIPTION	LOCATION
1	1942443.71	6153380.88	105.39	FM MAG	
2	1942375.49	6154218.84	103.36	FM MAG	
3	1943548.79	6154104.88	109.19	FM MAG	
4	1944780.11	6153878.56	95.40	FM MAG&SHINER	
5	1944553.88	6154743.07	94.09	FM MAG&SHINER	

VERTICAL DATUM
SANTA CLARA VALLEY WATER DISTRICT BENCHMARK BM294, ELEVATION = 91.38 FEET (NAVD88)
"BRASS DISK ON TOP AND BACK OF SIDEWALK; AT CENTER OF NORTH SIDE OF PARK AVENUE'S BRIDGE OVER GUADALUPE RIVER; ADJACENT TO ELECTROLIER #12L667. CITY OF SAN JOSE."

HORIZONTAL DATUM
CALIFORNIA COORDINATE SYSTEM OF 1983, ZONE 3, EPOCH 2007.00

- NOTES**
1. THE PROPERTY, RIGHT-OF-WAY AND STREET CENTERLINES SHOWN UPON THIS TOPOGRAPHIC SURVEY EXHIBIT WERE DEVELOPED BY USING RECORD INFORMATION. NO ATTEMPT WAS MADE TO RECONCILE ANY BOUNDARY OVERLAPS, GORES OR DISCREPANCIES WHICH A CURRENT BOUNDARY SURVEY MIGHT DISCLOSE.
 2. THE TOPOGRAPHIC MAPPING SHOWN IS BASED UPON AERIAL PHOTOGRAMMETRY PERFORMED IN NOVEMBER, 2013.
 3. UNDERGROUND INFORMATION FOR WET UTILITIES WAS BASED UPON THE LOCATION OF SURFACE VISIBLE UTILITIES AND AVAILABLE RECORD INFORMATION FOR STORM, SANITARY AND WATER (CITY OF SAN JOSE).
 4. UNDERGROUND INFORMATION FOR DRY UTILITIES WAS BASED UPON SCHEMATIC DRAWINGS OF THE FOLLOWING: CABLE (COMCAST), COMMUNICATIONS (AT&T, LEVEL3, VERIZON), GAS AND ELECTRIC (PG&E). ACTUAL LOCATION OF THESE FACILITIES MAY DIFFER SIGNIFICANTLY WHEN FIELD LOCATED.
 5. THIS EXHIBIT DOES NOT INDICATE THE LOCATION OF ALL UNDERGROUND UTILITIES ON THIS SITE THAT A U.S.A. MAY REVEAL.

Preliminary



REV	DATE	DESCRIPTION
△		
△		
△		
△		
△		
△		

SCALE: AS-NOTED	DRAWN BY: J. CABECA
DATE: JULY 2014	CHECKED BY: D. VON RUEDEN
SECTION MANAGER: JAN PALAJAC	
CPMS ID NUMBER: XXXX	

SHEET TITLE: KEY MAP AND SURVEY CONTROL	
SHEET NUMBER: G-3	
SHEET	X OF 23



CH2MHILL
1737 NORTH FIRST STREET, SUITE 300
SAN JOSE, CALIFORNIA 95112-4524
(408) 436-4936

DAVID SYKES
DIRECTOR OF PUBLIC WORKS

PROJECT TITLE:

DEPARTMENT OF PUBLIC WORKS
SAN JOSE, CALIFORNIA
City Facilities Architectural Services Division
LOS GATOS CREEK TRAIL
REACH 5B/C

REV	DATE	DESCRIPTION
△		
△		
△		
△		
△		
△		

SCALE: AS-NOTED	DRAWN BY: J. CABECA
DATE: JULY 2014	CHECKED BY: D. VON RUEDEN

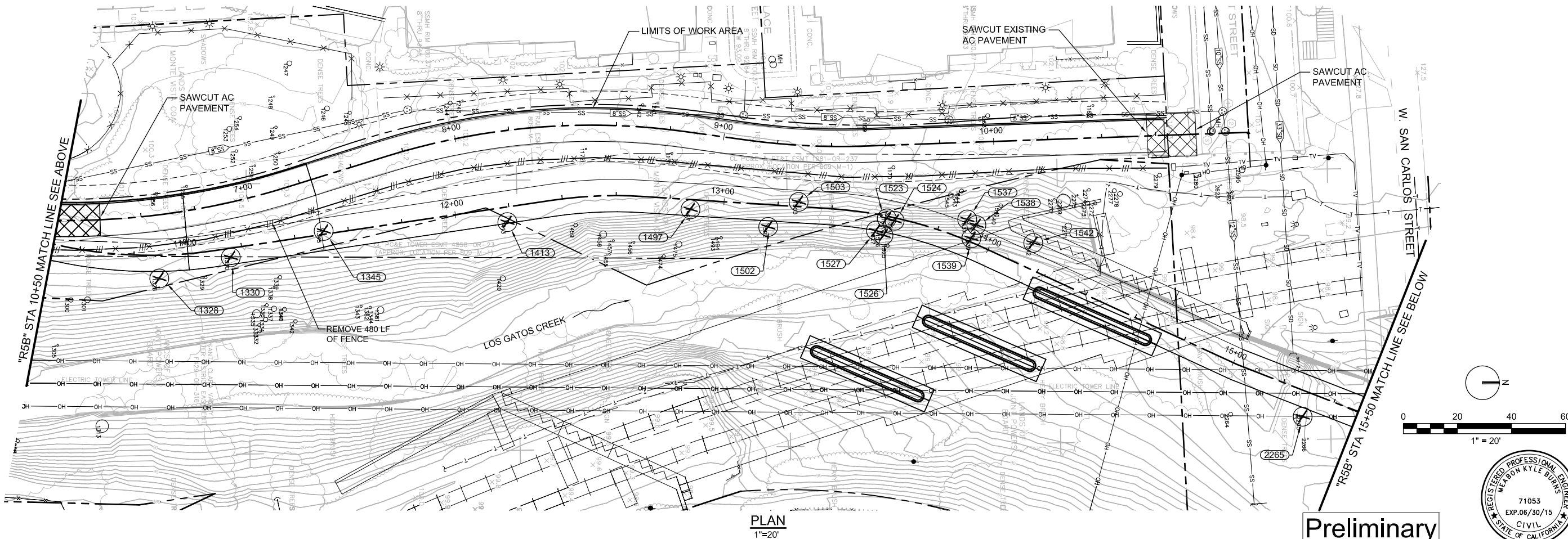
SECTION MANAGER: JAN PALAJAC
CPIHS ID NUMBER: XXXX
SHEET TITLE:

DEMOLITION AND TREE STUMP
REMOVAL PLAN

SHEET NUMBER:

D-I

SHEET X OF 23



Preliminary



NOTE: TREES TO BE REMOVED BY OTHERS

ID No.	DIAMETER	SPECIES	ACTION
1162	9"	TREE CLUSTER	REMAIN
1163	18"	TREE CLUSTER	REMAIN
1169	13"	TREE CLUSTER	REMAIN
1170	14"	TREE CLUSTER	REMAIN
1171	10"	TREE CLUSTER	REMAIN
1172	7"	TREE CLUSTER	REMAIN
1177	42"	TREE	REMAIN
1184	30"	TREE	REMAIN
1241	10"	TREE	REMAIN
1242	12"	TREE CLUSTER	REMAIN
1243	6"	TREE	REMAIN
1244	18"	TREE CLUSTER	REMAIN
1245	14"	TREE CLUSTER	REMAIN
1246	22"	TREE CLUSTER	REMAIN
1247	22"	TREE CLUSTER	REMAIN
1248	6"	TREE CLUSTER	REMAIN
1249	12"	TREE CLUSTER	REMAIN
1250	10"	TREE CLUSTER	REMAIN
1251	8"	TREE CLUSTER	REMAIN
1252	12"	TREE CLUSTER	REMAIN
1253	22"	TREE CLUSTER	REMAIN
1254	14"	TREE CLUSTER	REMAIN
1255	10"	TREE CLUSTER	REMAIN
1256	14"	TREE CLUSTER	REMAIN
1266	6"	TREE	REMAIN
1277	14"	TREE	REMAIN
1296	14"	TREE	REMAIN
1297	12"	TREE	REMAIN
1300	20"	TREE	REMAIN
1301	26"	TREE	REMAIN
1304	12"	TREE	REMAIN
1305	8"	TREE	REMAIN
1306	12"	TREE	REMAIN
1308	48"	TREE	REMAIN
1309	42"	TREE CLUSTER	REMAIN
1310	12"	TREE	REMAIN
1311	30"	TREE	REMAIN
1312	10"	TREE	REMAIN
1313	56"	TREE CLUSTER	REMAIN
1328	12"	TREE	REMOVE
1329	12"	TREE	REMAIN
1330	14"	TREE	REMOVE
1332	10"	TREE	REMAIN
1333	14"	TREE	REMAIN
1334	20"	TREE	REMAIN
1335	36"	TREE	REMAIN
1336	14"	TREE	REMAIN
1337	24"	TREE	REMAIN
1338	10"	TREE	REMAIN
1339	16"	TREE	REMAIN
1340	16"	TREE	REMAIN
1341	18"	TREE	REMAIN
1342	16"	TREE	REMAIN
1343	10"	TREE	REMAIN
1344	30"	TREE	REMAIN
1345	16"	TREE	REMOVE
1381	30"	TREE	REMAIN
1382	12"	TREE	REMAIN


ID No.	DIAMETER	SPECIES	ACTION
1413	16"	TREE	REMOVE
1420	24"	TREE	REMAIN
1455	8"	TREE	REMAIN
1456	10"	TREE	REMAIN
1457	10"	TREE	REMAIN
1458	32"	TREE	REMAIN
1459	16"	TREE	REMAIN
1474	14"	TREE	REMAIN
1475	28"	TREE	REMAIN
1493	12"	TREE	REMAIN
1494	12"	TREE	REMAIN
1497	10"	TREE	REMOVE
1502	12"	TREE	REMOVE
1503	20"	TREE CLUSTER	REMOVE
1523	6"	TREE CLUSTER	REMOVE
1524	10"	TREE CLUSTER	REMOVE
1525	14"	TREE CLUSTER	REMAIN
1526	8"	TREE	REMOVE
1527	12"	TREE	REMOVE
1537	10"	TREE	REMOVE
1538	16"	TREE	REMOVE
1539	12"	TREE	REMOVE
1540	6"	TREE	REMAIN
1541	16"	TREE	REMAIN
1542	16"	TREE	REMOVE
1543	10"	TREE	REMAIN
1544	18"	TREE CLUSTER	REMAIN
1545	20"	TREE CLUSTER	REMAIN
1573	30"	TREE	REMOVE
1583	12"	TREE CLUSTER	REMAIN
1584	8"	TREE	REMAIN
1585	8"	TREE	REMAIN
1586	12"	TREE	REMAIN
1587	12"	TREE	REMAIN
1588	14"	TREE	REMAIN
1589	10"	TREE	REMAIN
1590	10"	TREE	REMAIN
1591	8"	TREE	REMAIN
1592	24"	TREE	REMAIN
1593	10"	TREE	REMAIN
1594	20"	TREE	REMAIN
1595	10"	TREE	REMAIN
1596	10"	TREE	REMAIN
1597	10"	TREE	REMAIN
1601	30"	TREE CLUSTER	REMAIN
1625	6"	TREE	REMAIN
1626	8"	TREE	REMAIN
1627	10"	TREE CLUSTER	REMAIN
1628	8"	TREE	REMAIN
1629	18"	TREE	REMAIN
1630	8"	TREE	REMAIN
1685	20"	TREE	REMAIN
1686	8"	TREE	REMAIN
1687	14"	TREE	REMAIN
1688	16"	TREE	REMAIN
1689	36"	TREE	REMAIN
1690	8"	TREE	REMAIN
1691	8"	TREE	REMAIN
1692	8"	TREE	REMAIN
1693	6"	TREE	REMAIN
1694	6"	TREE	REMAIN

ID No.	DIAMETER	SPECIES	ACTION
1695	44"	TREE CLUSTER	REMAIN
1696	14"	TREE	REMAIN
1718	20"	TREE	REMAIN
1719	14"	TREE	REMAIN
1720	12"	TREE	REMAIN
1721	12"	TREE	REMAIN
1722	12"	TREE	REMAIN
1723	6"	TREE	REMAIN
1724	6"	TREE	REMAIN
1725	18"	TREE	REMAIN
1726	12"	TREE	REMAIN
1729	28"	TREE	REMAIN
1730	12"	TREE	REMAIN
1732	40"	TREE	REMAIN
1733	44"	TREE	REMAIN
1734	44"	TREE	REMAIN
1735	6"	TREE	REMAIN
1736	6"	TREE	REMAIN
1737	8"	TREE	REMAIN
1738	12"	TREE	REMAIN
1739	18"	TREE	REMAIN
1740	12"	TREE	REMAIN
1741	10"	TREE	REMAIN
1790	14"	TREE	REMAIN
1791	10"	TREE	REMAIN
1792	14"	TREE	REMAIN
1793	12"	TREE	REMAIN
1794	12"	TREE	REMAIN
1795	14"	TREE	REMAIN
1796	14"	TREE	REMAIN
1797	8"	TREE	REMAIN
1798	12"	TREE	REMAIN
1799	12"	TREE	REMAIN
1800	14"	TREE	REMAIN
1801	10"	TREE	REMAIN
1802	16"	TREE	REMAIN
1803	14"	TREE	REMAIN
1804	24"	TREE CLUSTER	REMAIN
1805	12"	TREE	REMAIN
1806	6"	TREE	REMAIN
1835	12"	TREE	REMAIN
1836	14"	TREE	REMAIN
1861	26"	TREE	REMAIN
1897	22"	TREE	REMAIN
1898	10"	TREE	REMAIN
1900	6"	TREE	REMAIN
1901	16"	TREE CLUSTER	REMAIN
1902	6"	TREE	REMAIN
1903	14"	TREE CLUSTER	REMAIN
1905	14"	TREE	REMOVE
1931	16"	TREE	REMAIN
1932	20"	TREE	REMAIN
1951	34"	TREE	REMAIN
1952	14"	TREE	REMAIN
1953	16"	TREE	REMAIN
1956	14"	TREE	REMAIN
1957	6"	TREE	REMAIN
1958	6"	TREE	REMAIN
1959	12"	TREE	REMAIN
1960	8"	TREE	REMAIN
1961	6"	TREE	REMAIN


ID No.	DIAMETER	SPECIES	ACTION
1962	6"	TREE	REMAIN
1963	8"	TREE	REMAIN
1964	10"	TREE	REMAIN
1965	36"	TREE	REMAIN
1966	26"	TREE	REMAIN
1967	28"	TREE	REMAIN
1968	18"	TREE	REMAIN
1969	10"	TREE	REMAIN
1970	36"	TREE	REMAIN
1971	8"	TREE	REMAIN
1972	12"	TREE	REMAIN
1973	8"	TREE	REMAIN
2045	14"	TREE	REMAIN
2046	12"	TREE CLUSTER	REMAIN
2047	14"	TREE	REMAIN
2048	8"	TREE	REMAIN
2049	24"	TREE	REMAIN
2050	20"	TREE	REMAIN
2051	28"	TREE	REMAIN
2052	18"	TREE	REMAIN
2062	18"	TREE CLUSTER	REMAIN
2063	12"	TREE	REMAIN
2104	16"	TREE	REMAIN
2105	16"	TREE	REMAIN
2106	16"	TREE	REMAIN
2107	24"	TREE	REMAIN
2108	24"	TREE	REMAIN
2109	24"	TREE	REMAIN
2110	14"	TREE	REMAIN
2111	14"	TREE	REMAIN
2112	14"	TREE	REMAIN
2113	12"	TREE	REMAIN
2114	12"	TREE	REMAIN
2174	14"	TREE	REMAIN
2264	18"	TREE	REMAIN
2265	12"	TREE	REMOVE
2266	6"	TREE	REMAIN
2269	62"	TREE CLUSTER	REMAIN
2270	8"	TREE	REMAIN
2271	30"	TREE CLUSTER	REMAIN
2272	14"	TREE CLUSTER	REMAIN
2273	20"	TREE CLUSTER	REMAIN
2274	12"	TREE	REMAIN
2275	6"	TREE	REMAIN
2277	18"	TREE CLUSTER	REMAIN
2278	22"	TREE CLUSTER	REMAIN
2279	18"	TREE CLUSTER	REMAIN
2280	12"	TREE CLUSTER	REMAIN
2450	30"	TREE	REMAIN
2595	26"	TREE CLUSTER	REMAIN
2622	8"	TREE CLUSTER	REMAIN
2623	6"	TREE	REMAIN

Preliminary





CITY OF
SAN JOSE
CAPITAL OF SILICON VALLEY
City Facilities and Architectural Services



CH2MHILL
1737 NORTH FIRST STREET, SUITE 300
SAN JOSE, CALIFORNIA 95112-4524
(408) 436-4936

DAVID SYKES
DIRECTOR OF PUBLIC WORKS

PROJECT TITLE:

DEPARTMENT OF PUBLIC WORKS
SAN JOSE, CALIFORNIA
City Facilities Architectural Services Division
LOS GATOS CREEK TRAIL
REACH 5B/C

REV	DATE	DESCRIPTION
△		
△		
△		
△		
△		
△		

SCALE: AS-NOTED	DRAWN BY: J. CABECA
DATE: JULY 2014	CHECKED BY: D. VON RUEDEN

SECTION MANAGER:
JAN PALAJAC

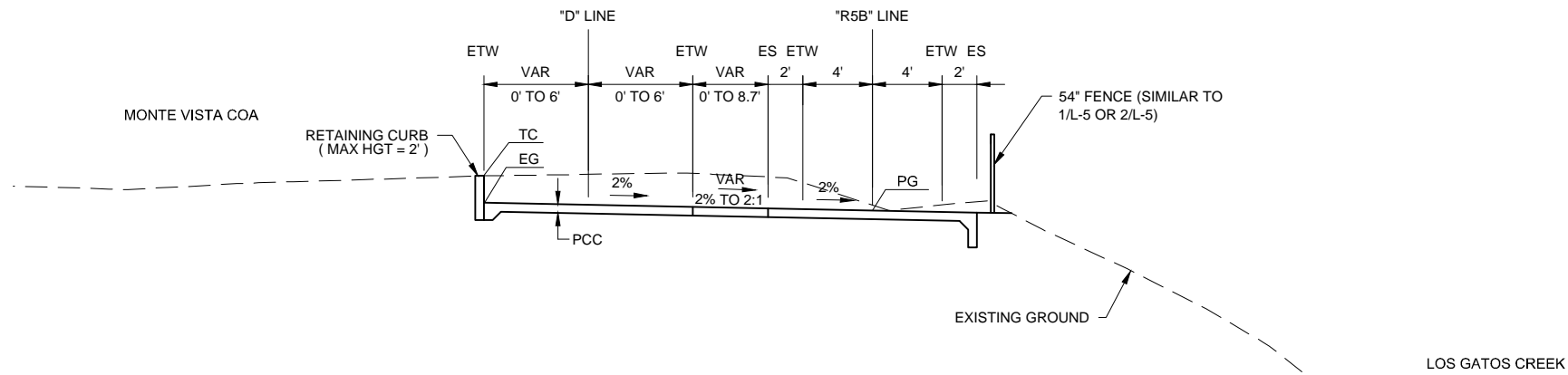
CPRS ID NUMBER:
XXXX

SHEET TITLE:

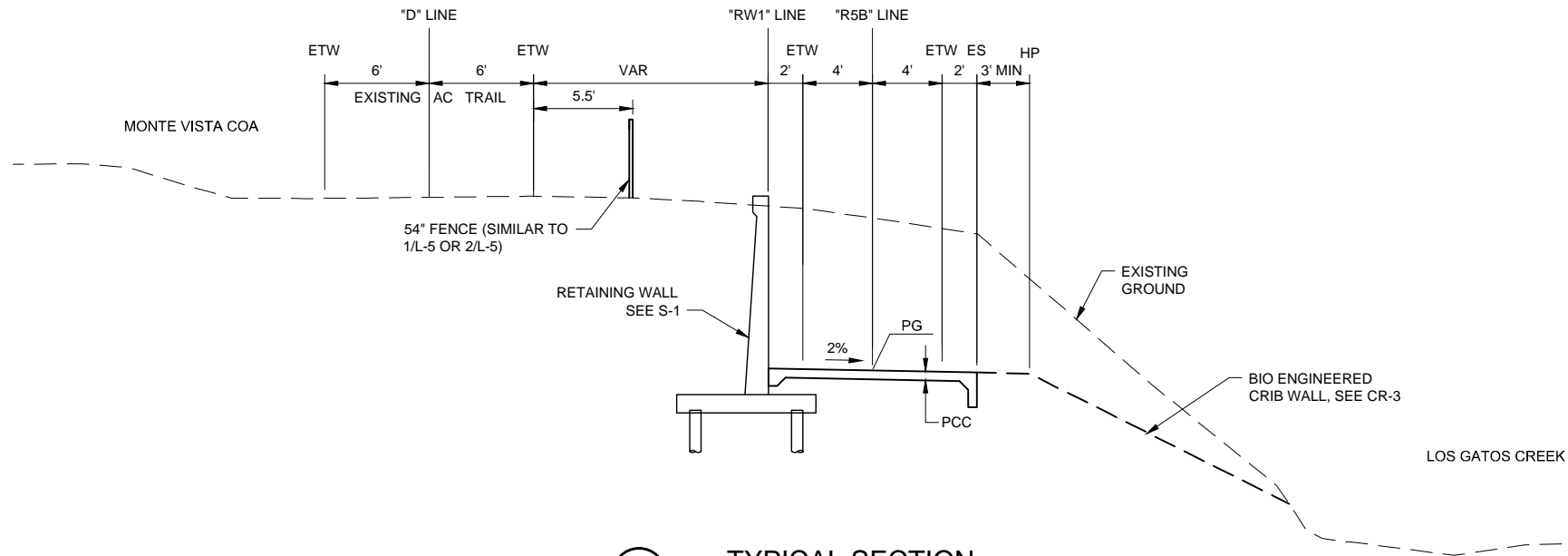
TREE INVENTORY

SHEET NUMBER:	D-3
SHEET	X
OF	23

PLOT DATE: 07-17-14 15:30:21 LOCTR5B_X1-X3.dwg



1
X-1
TYPICAL SECTION
NTS * R5B * STA 9+71.36 TO STA 11+50



2
X-1
TYPICAL SECTION
NTS * R5B * STA 11+50 TO STA 13+93

Preliminary



DAVID SYKES
DIRECTOR OF PUBLIC WORKS

PROJECT TITLE:

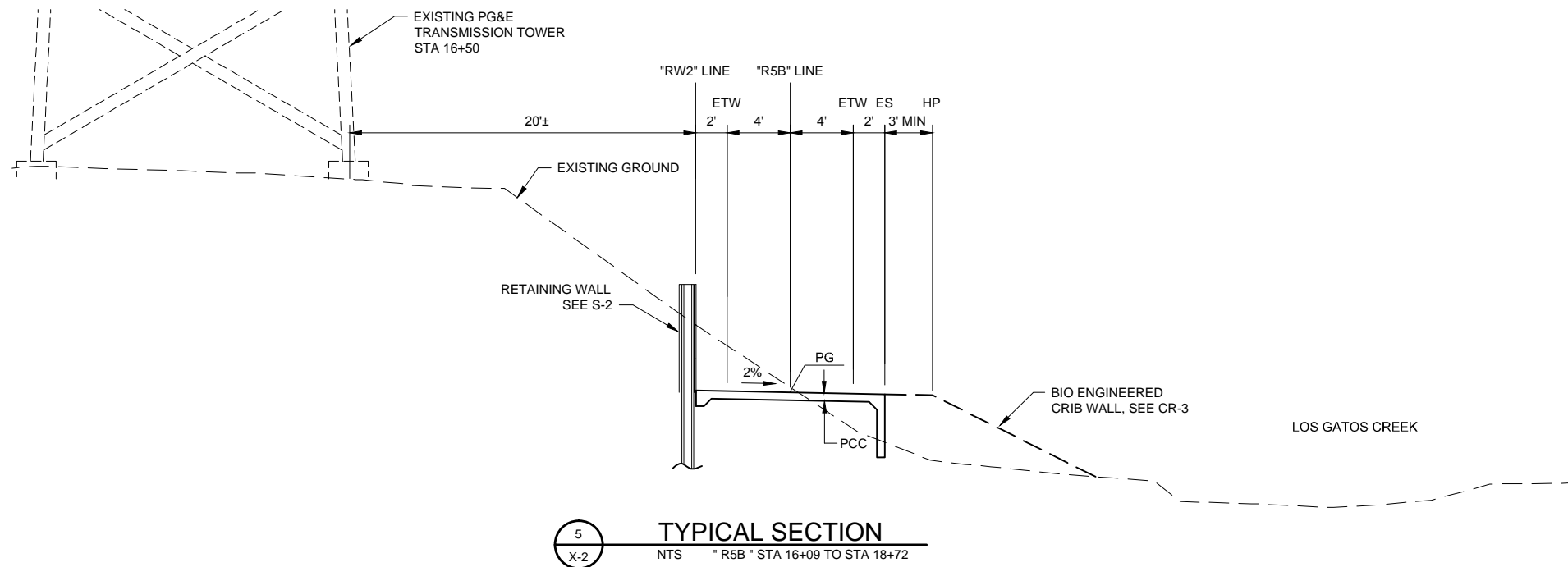
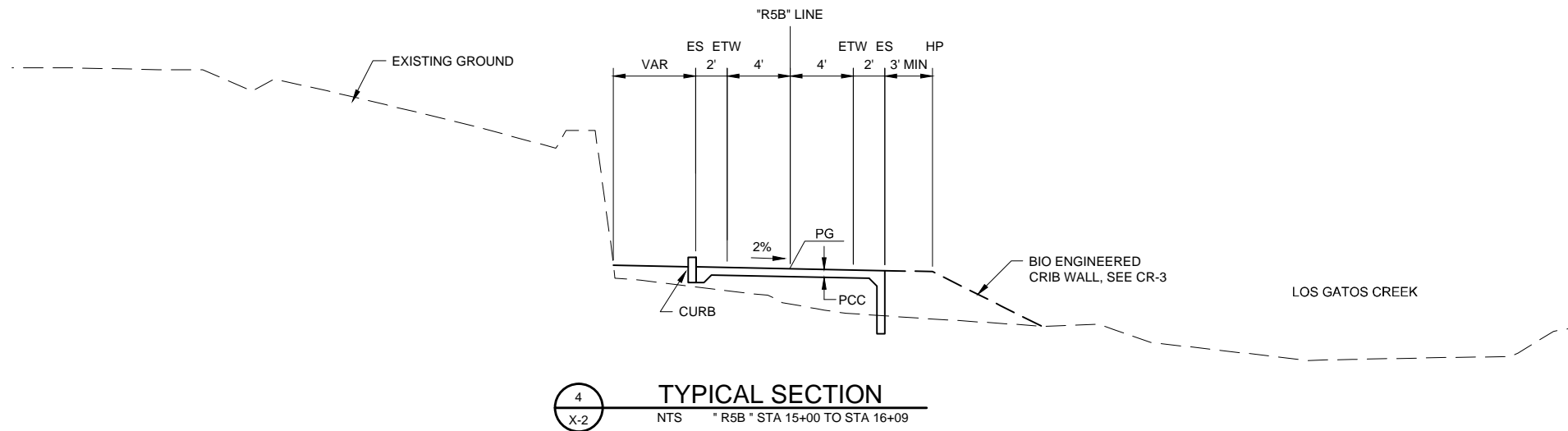
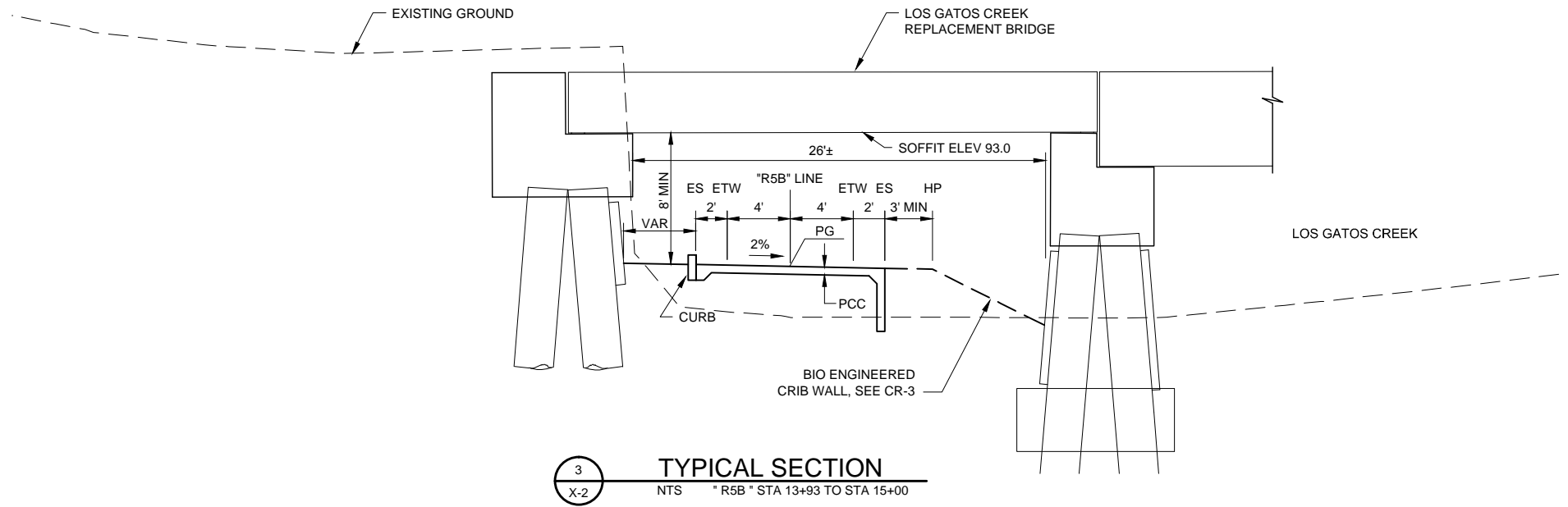
DEPARTMENT OF PUBLIC WORKS
SAN JOSE, CALIFORNIA
City Facilities Architectural Services Division
LOS GATOS CREEK TRAIL
REACH 5B/C

REV	DATE	DESCRIPTION
△		
△		
△		
△		
△		
△		

SCALE: AS-NOTED	DRAWN BY: J. CABECA
DATE: JULY 2014	CHECKED BY: D. VON RUEDEN
SECTION MANAGER: JAN PALAJAC	
CPMS ID NUMBER: XXXX	


SHEET TITLE: TYPICAL TRAIL CROSS SECTIONS	
SHEET NUMBER: X-1	
SHEET	23

PLOT DATE: 07-17-14 15:30:51 LOCTR5B_X1-X3.dwg




Preliminary





CITY OF
SAN JOSE
CAPITAL OF SILICON VALLEY
City Facilities and Architectural Services



CH2MHILL
1737 NORTH FIRST STREET, SUITE 300
SAN JOSE, CALIFORNIA 95112-4524
(408) 436-4936

DAVID SYKES
DIRECTOR OF PUBLIC WORKS

PROJECT TITLE:

DEPARTMENT OF PUBLIC WORKS
SAN JOSE, CALIFORNIA
City Facilities Architectural Services Division
LOS GATOS CREEK TRAIL
REACH 5B/C

REV	DATE	DESCRIPTION
△		
△		
△		
△		
△		
△		

SCALE:	DRAWN BY:
AS-NOTED	J. CABECA

DATE:	CHECKED BY:
JULY 2014	D. VON RUEDEN

SECTION MANAGER:
JAN PALAJAC

CPMS ID NUMBER:
XXXX

SHEET TITLE:

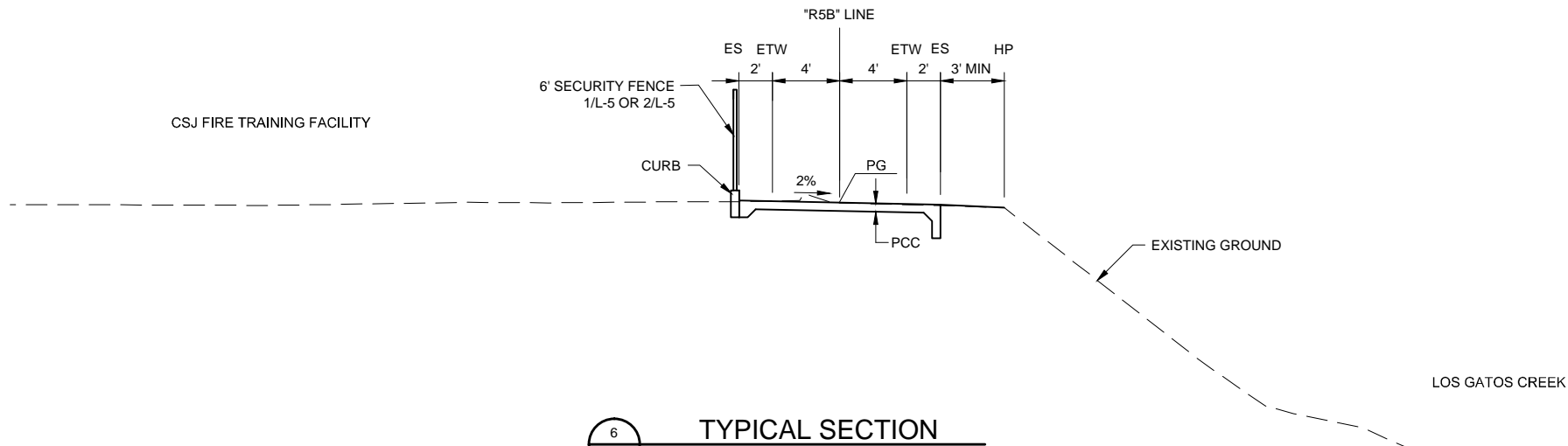
TYPICAL TRAIL CROSS SECTIONS

SHEET NUMBER:

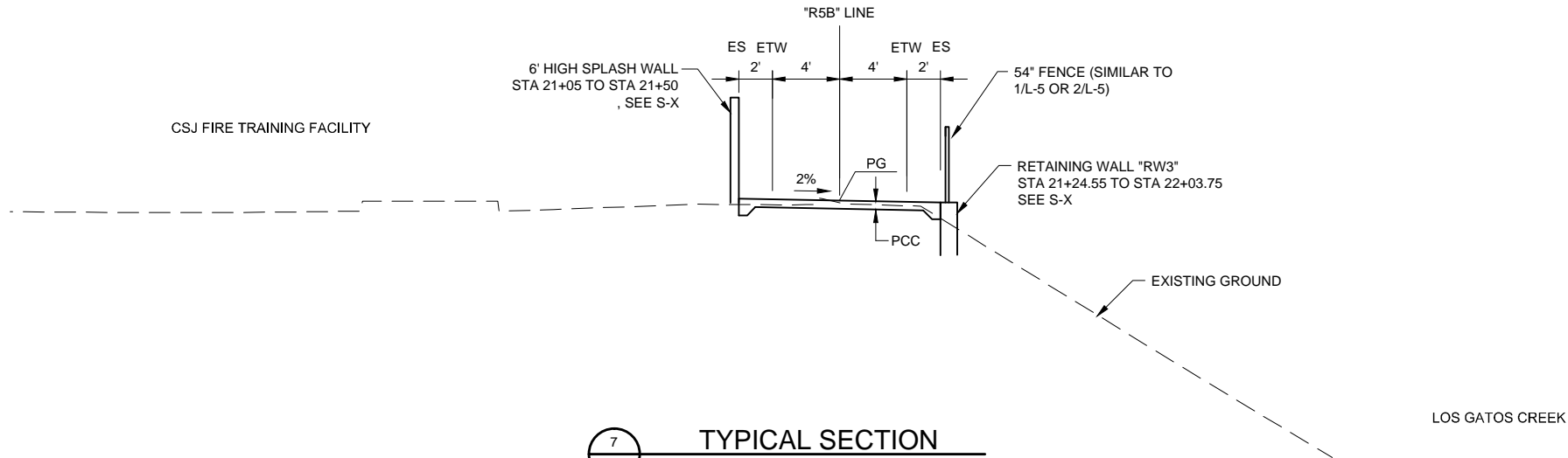
X-2

SHEET X OF 23

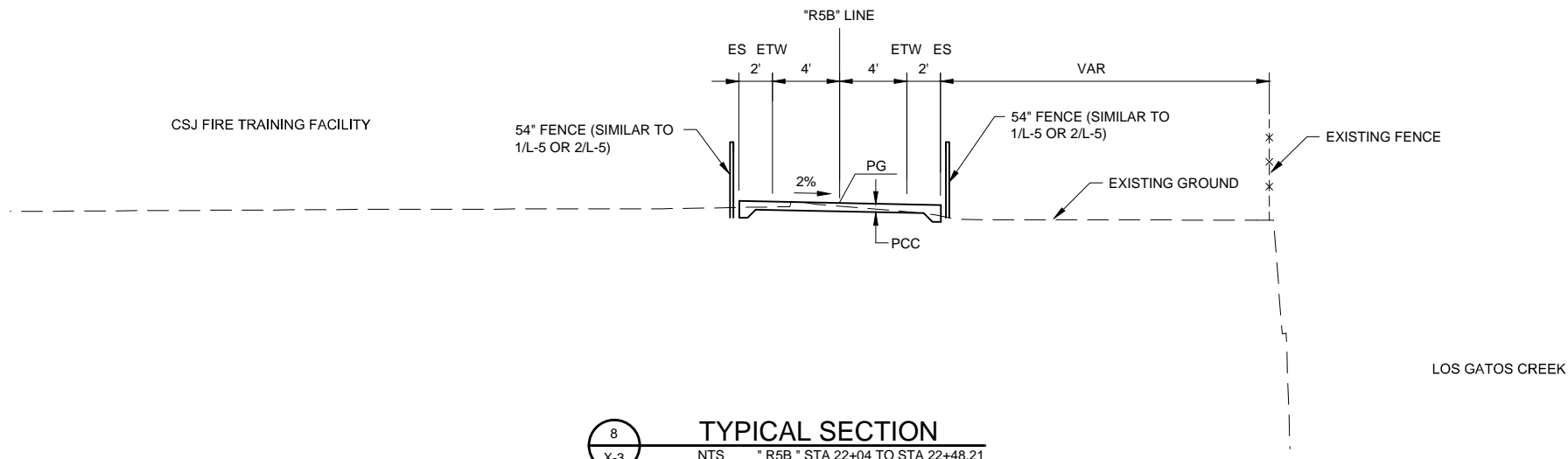
PLOT DATE: 07-17-14 15:31:46 LC0TR5B_X1-X3.dwg



6
X-3
TYPICAL SECTION
NTS * R5B * STA 18+72 TO STA 21+00



7
X-3
TYPICAL SECTION
NTS * R5B * STA 21+00 TO STA 22+04



8
X-3
TYPICAL SECTION
NTS * R5B * STA 22+04 TO STA 22+48.21

Preliminary



DAVID SYKES
DIRECTOR OF PUBLIC WORKS

PROJECT TITLE:

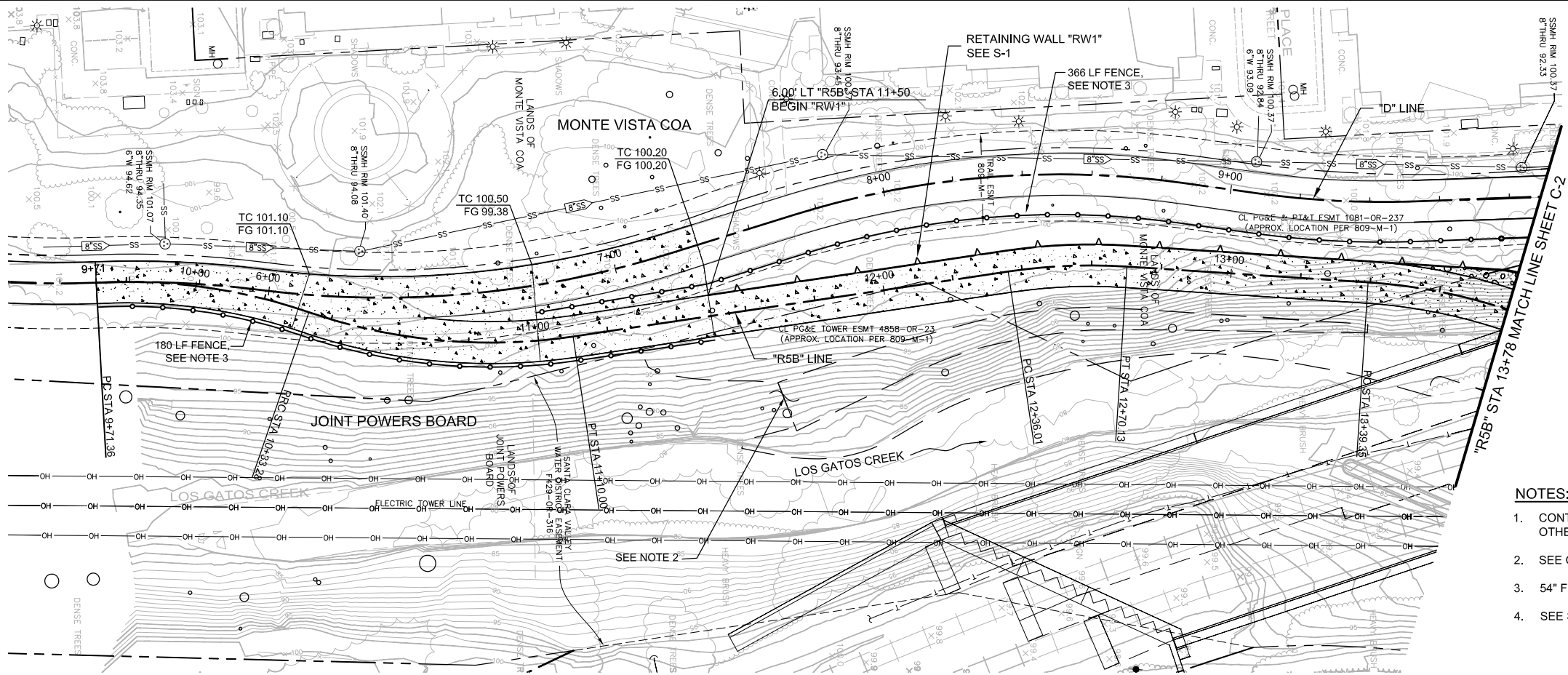
DEPARTMENT OF PUBLIC WORKS
SAN JOSE, CALIFORNIA
City Facilities Architectural Services Division
LOS GATOS CREEK TRAIL
REACH 5B/C

REV	DATE	DESCRIPTION
△		
△		
△		
△		
△		
△		

SCALE: AS-NOTED	DRAWN BY: J. CABECA
DATE: JULY 2014	CHECKED BY: D. VON RUEDEN
SECTION MANAGER: JAN PALAJAC	
CPMS ID NUMBER: XXXX	

SHEET TITLE: TYPICAL TRAIL CROSS SECTIONS	
SHEET NUMBER: X-3	
SHEET X OF 23	

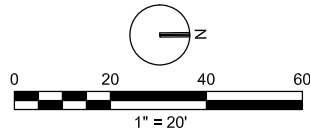
PLOT DATE: 07-17-14 14:06:01 LGCR5B_C1-C4.dwg



PLAN
1"=20'

NOTES:

1. CONTRACTOR TO PROTECT ALL EXISTING UTILITIES IN PLACE, UNLESS OTHERWISE NOTED.
2. SEE CR-1 TO CR-4 FOR CRIBWALL LAYOUT AND DETAILS.
3. 54" FENCE SHALL BE SIMILAR TO 1/L-5 OR 2/L-5.
4. SEE SS-X FOR "D" LINE RESTORATION.

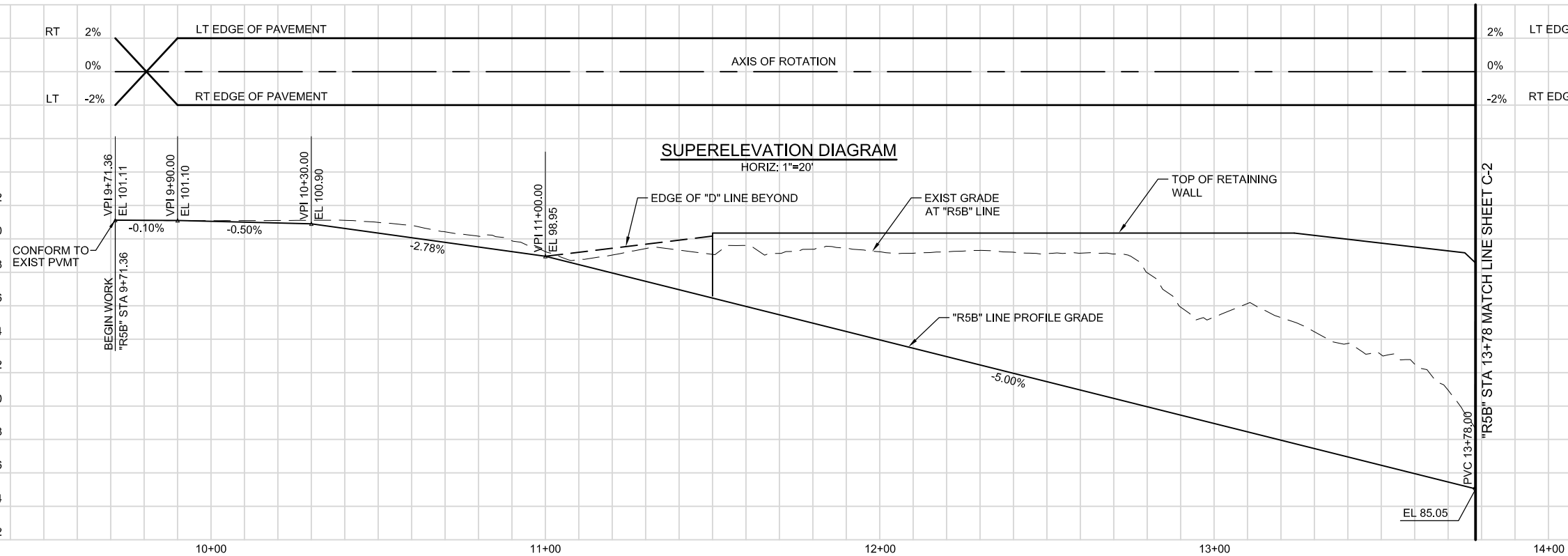


CURVE DATA				
NO.	R	Δ	T	L
①	XXX.XX'	XX°XX'XX" L	XX.XX'	XXX.XX'
②				
③				
④				

TANGENT DATA		
NO.	BEARING	DISTANCE
1	N XX°XX'XX" E	XXX.XX'
2		
3		
4		

LEGEND:

- PCC
■ HMA (TYPE A)
□ AB



"R5B" LINE PROFILE
HORIZ: 1"=20'
VERT: 1"=4'

Preliminary



DAVID SYKES
DIRECTOR OF PUBLIC WORKS

PROJECT TITLE:

DEPARTMENT OF PUBLIC WORKS
SAN JOSE, CALIFORNIA
City Facilities Architectural Services Division
LOS GATOS CREEK TRAIL
REACH 5B/C

REV	DATE	DESCRIPTION
△		
△		
△		
△		
△		
△		

SCALE: AS-NOTED	DRAWN BY: J. CABECA
DATE: JULY 2014	CHECKED BY: D. VON RUEDEN
SECTION MANAGER: JAN PALAJAC	
CPHS ID NUMBER: XXXX	

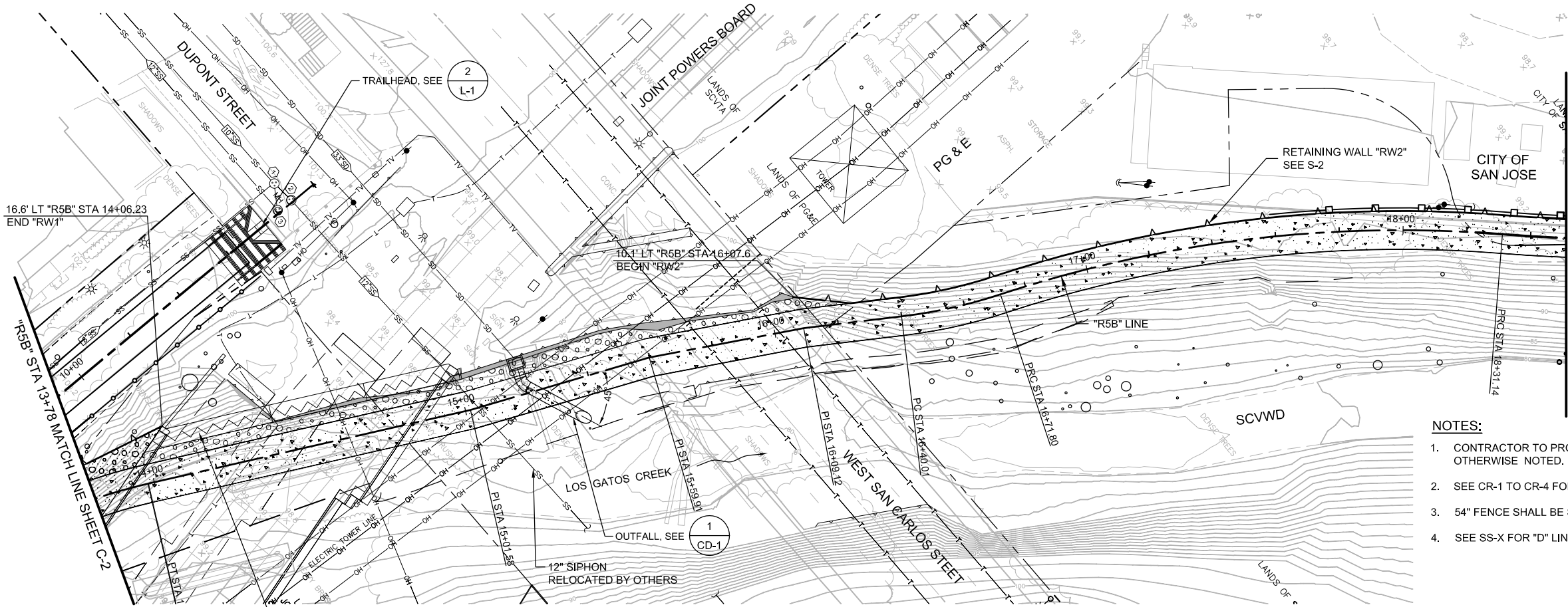
SHEET TITLE:

PLAN AND PROFILE

SHEET NUMBER:

C-1

PLOT DATE: 07-17-14 LC05R5B_C1-C4.dwg



PLAN
1"=20'

CURVE DATA				
NO.	R	Δ	T	L
①	XXX.XX'	XX°XX'XX" L	XX.XX'	XXX.XX'
②				
③				
④				

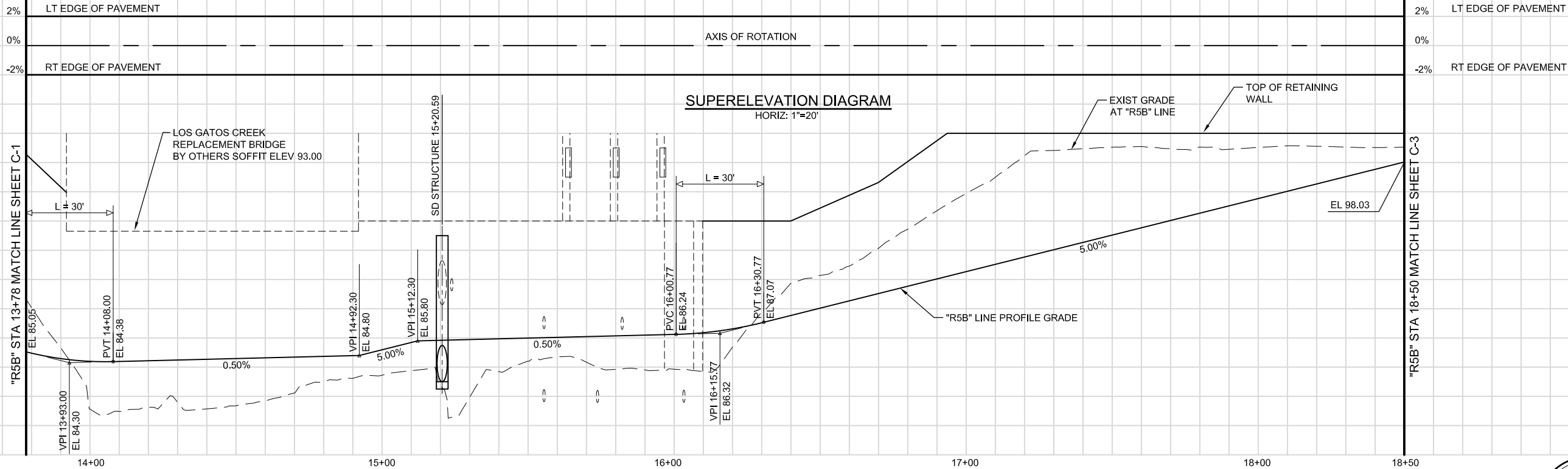
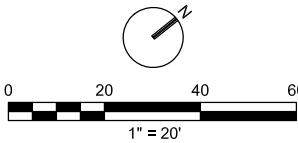
TANGENT DATA		
NO.	BEARING	DISTANCE
1	N XX°XX'XX" E	XXX.XX'
2		
3		
4		

LEGEND:

- PCC
■ HMA (TYPE A)
■ AB

NOTES:

- CONTRACTOR TO PROTECT ALL EXISTING UTILITIES IN PLACE, UNLESS OTHERWISE NOTED.
- SEE CR-1 TO CR-4 FOR CRIBWALL LAYOUT AND DETAILS.
- 54" FENCE SHALL BE SIMILAR TO 1/L-5 OR 2/L-5.
- SEE SS-X FOR "D" LINE RESTORATION.



"R5B" LINE PROFILE
HORIZ: 1"=20'
VERT: 1"=4'

Preliminary



CITY OF SAN JOSE
CAPITAL OF SILICON VALLEY
City Facilities and Architectural Services

CH2MHILL
1737 NORTH FIRST STREET, SUITE 300
SAN JOSE, CALIFORNIA 95112-4524
(408) 436-4936

DAVID SYKES
DIRECTOR OF PUBLIC WORKS

PROJECT TITLE:
**DEPARTMENT OF PUBLIC WORKS
SAN JOSE, CALIFORNIA**
City Facilities Architectural Services Division
**LOS GATOS CREEK TRAIL
REACH 5B/C**

REV	DATE	DESCRIPTION
Δ		
Δ		
Δ		
Δ		
Δ		
Δ		

SCALE:	DRAWN BY:
AS-NOTED	J. CABECA

DATE:	CHECKED BY:
JULY 2014	D. VON RUEDEN

SECTION MANAGER:
JAN PALAJAC

CPMS ID NUMBER:
XXXX

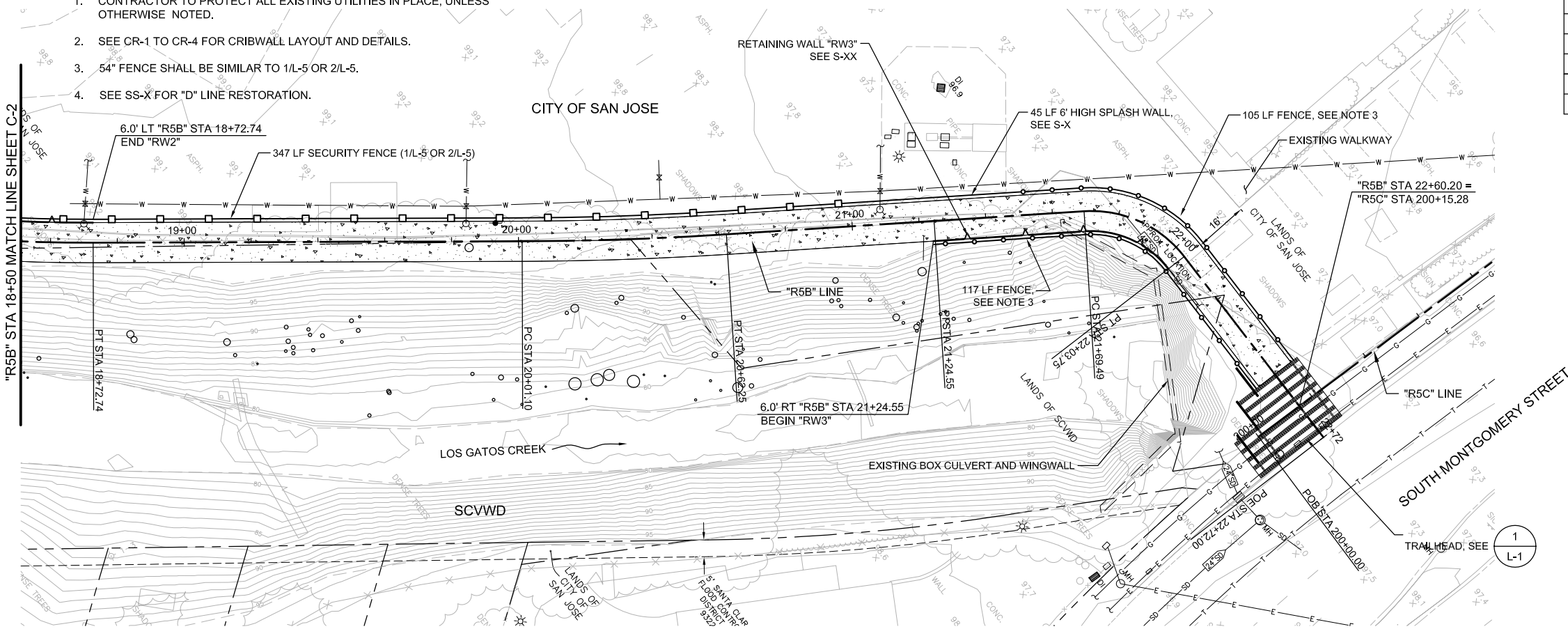
SHEET TITLE:
PLAN AND PROFILE

SHEET NUMBER:
C-2

SHEET **11** OF **23**

NOTES:

- CONTRACTOR TO PROTECT ALL EXISTING UTILITIES IN PLACE, UNLESS OTHERWISE NOTED.
- SEE CR-1 TO CR-4 FOR CRIBWALL LAYOUT AND DETAILS.
- 54" FENCE SHALL BE SIMILAR TO 1/L-5 OR 2/L-5.
- SEE SS-X FOR "D" LINE RESTORATION.



CURVE DATA

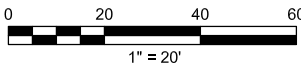
NO.	R	Δ	T	L
①	XXX.XX'	XX°XX'XX" L	XX.XX'	XXX.XX'
②				
③				
④				

TANGENT DATA

NO.	BEARING	DISTANCE
1	N XX°XX'XX" E	XXX.XX'
2		
3		
4		

LEGEND:

- PCC
- HMA (TYPE A)
- AB



CH2MHILL
1737 NORTH FIRST STREET, SUITE 300
SAN JOSE, CALIFORNIA 95112-4524
(408) 436-4936

DAVID SYKES
DIRECTOR OF PUBLIC WORKS

PROJECT TITLE:

DEPARTMENT OF PUBLIC WORKS
SAN JOSE, CALIFORNIA
City Facilities Architectural Services Division
**LOS GATOS CREEK TRAIL
REACH 5B/C**

REV	DATE	DESCRIPTION
△		
△		
△		
△		
△		
△		

SCALE: AS-NOTED	DRAWN BY: J. CABECA
DATE: JULY 2014	CHECKED BY: D. VON RUEDEN
SECTION MANAGER: JAN PALAJAC	
CPHS ID NUMBER: XXXX	

SHEET TITLE:

PLAN AND PROFILE

SHEET NUMBER:

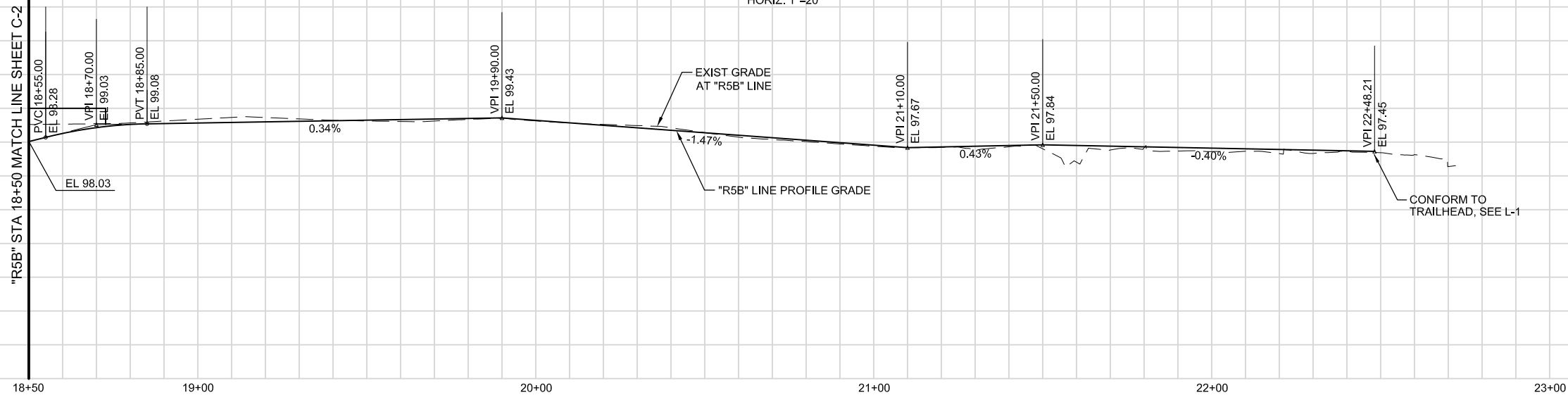
C-3

SHEET X OF 23

2% LT EDGE OF PAVEMENT
0%
-2% RT EDGE OF PAVEMENT

2% LT EDGE OF PAVEMENT
0%
-2% RT EDGE OF PAVEMENT

SUPERELEVATION DIAGRAM
HORIZ: 1"=20'



"R5B" LINE PROFILE
HORIZ: 1"=20'
VERT: 1"=4'

Preliminary





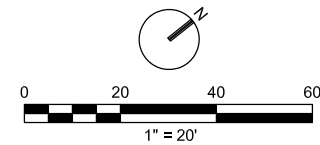
1. CONTRACTOR TO PROTECT ALL EXISTING UTILITIES IN PLACE, UNLESS OTHERWISE NOTED.
2. SEE CR-1 TO CR-4 FOR CRIBWALL LAYOUT AND DETAILS.
3. 54" FENCE SHALL BE SIMILAR TO 1/L-5 OR 2/L-5.
4. SEE SS-X FOR "D" LINE RESTORATION.

CURVE DATATANGENT DATA

PCC

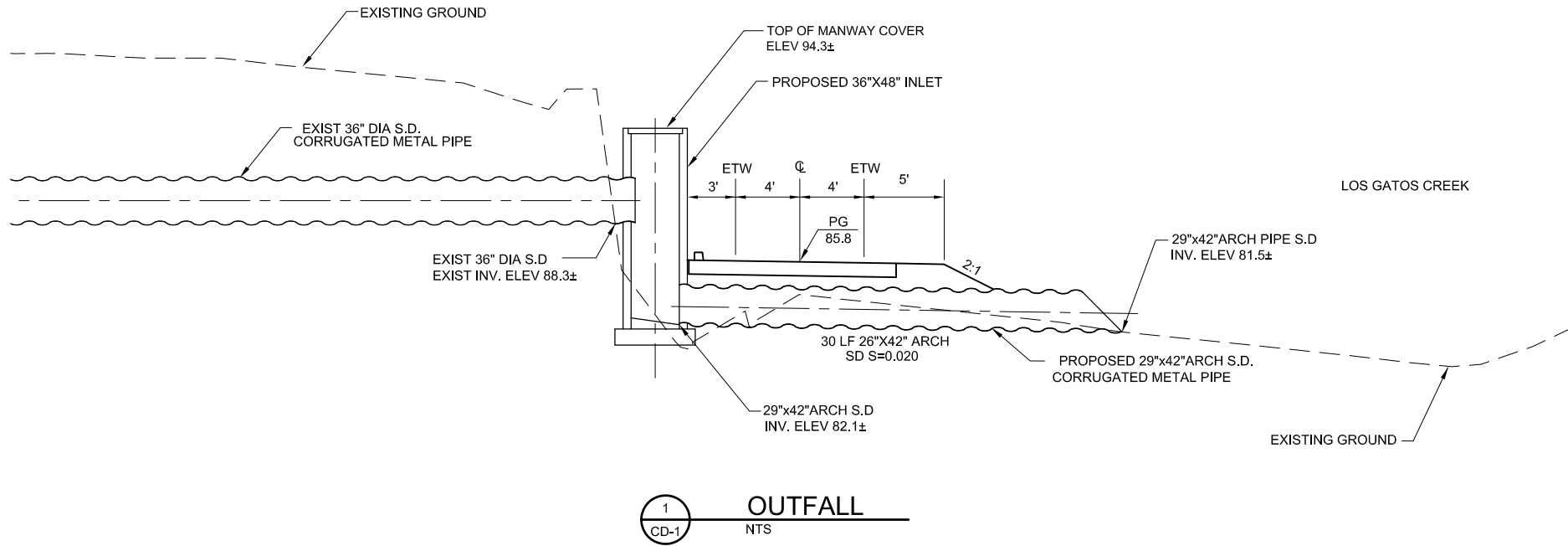
HMA (TYPE A)

AB



Preliminary

PLOT DATE: 07-17-14 15:19:23 LGCTR5B_CD1-CD4.dwg



Preliminary



DAVID SYKES
DIRECTOR OF PUBLIC WORKS

PROJECT TITLE:

DEPARTMENT OF PUBLIC WORKS
SAN JOSE, CALIFORNIA
City Facilities Architectural Services Division
LOS GATOS CREEK TRAIL
REACH 5B/C

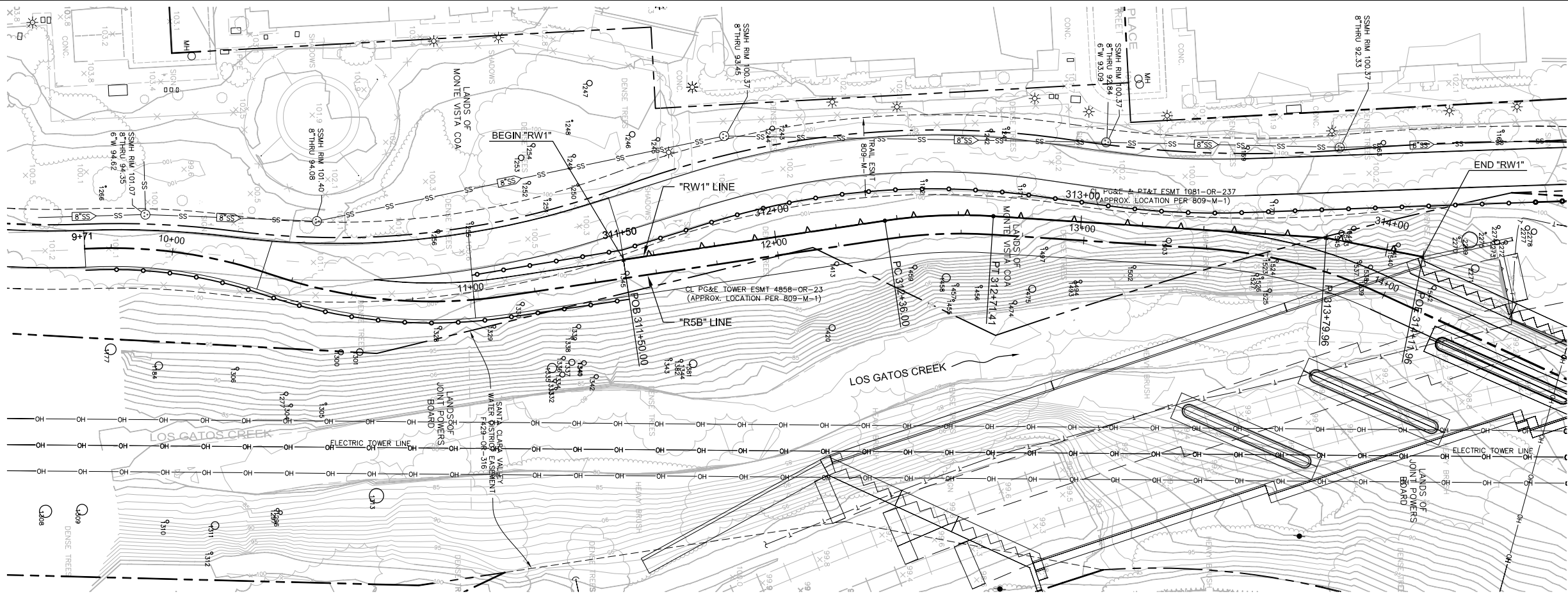
REV	DATE	DESCRIPTION
△		
△		
△		
△		
△		
△		

SCALE: AS-NOTED	DRAWN BY: J. CABECA
DATE: JULY 2014	CHECKED BY: D. VON RUEDEN
SECTION MANAGER: JAN PALAJAC	
CPHS ID NUMBER: XXXX	

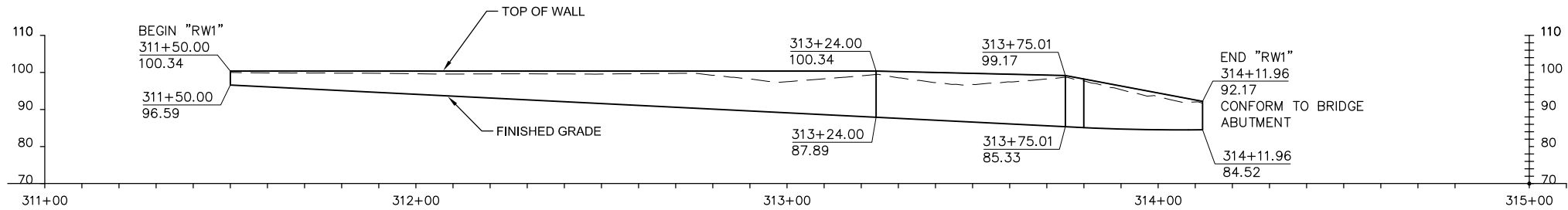
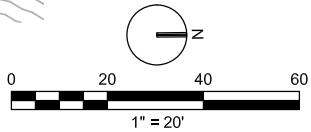
SHEET TITLE:

MISCELLANEOUS
CONSTRUCTION DETAILS

SHEET NUMBER: CD-I
SHEET X OF 23



PLAN
1"=20'



DEVELOPED ELEVATION ALONG "RW1" LINE
HORIZ: 1"=20'
VERT: 1"=20'

Preliminary



CITY OF
SAN JOSE
CAPITAL OF SILICON VALLEY
City Facilities and Architectural Services

CH2MHILL
1737 NORTH FIRST STREET, SUITE 300
SAN JOSE, CALIFORNIA 95112-4524
(408) 436-4936

DAVID SYKES
DIRECTOR OF PUBLIC WORKS

PROJECT TITLE:

DEPARTMENT OF PUBLIC WORKS
SAN JOSE, CALIFORNIA
City Facilities Architectural Services Division
**LOS GATOS CREEK TRAIL
REACH 5B/C**

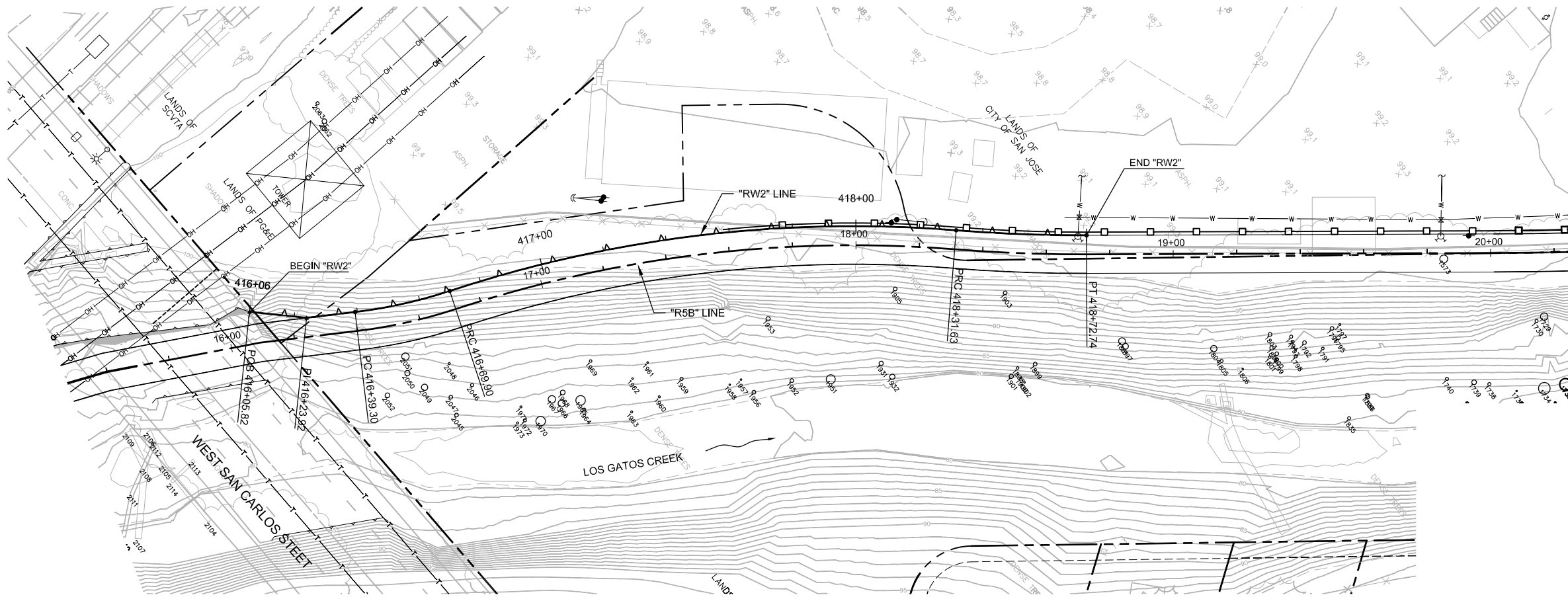
REV	DATE	DESCRIPTION
△		
△		
△		
△		
△		
△		

SCALE: AS-NOTED	DRAWN BY: J. CABECA
DATE: JULY 2014	CHECKED BY: D. VON RUEDEN
SECTION MANAGER: JAN PALAJAC	
CPHS ID NUMBER: XXXX	
SHEET TITLE:	

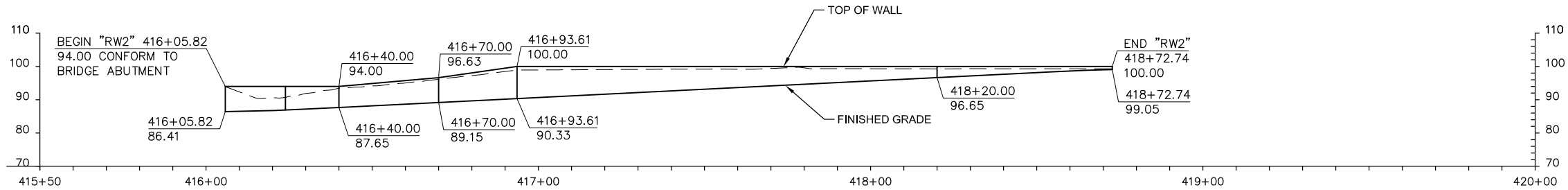
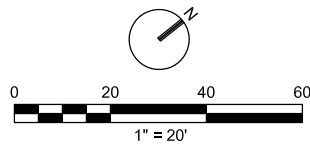
SHEET NUMBER:

S-1

SHEET X OF 23



PLAN



DEVELOPED ELEVATION ALONG "RW2" LINE

HORIZ: 1"=20'
VERT: 1"=20'

Preliminary



REV	DATE	DESCRIPTION
△		
△		
△		
△		
△		
△		

SCALE: AS-NOTED	DRAWN BY: J. CABECA
DATE: JULY 2014	CHECKED BY: D. VON RUEDEN

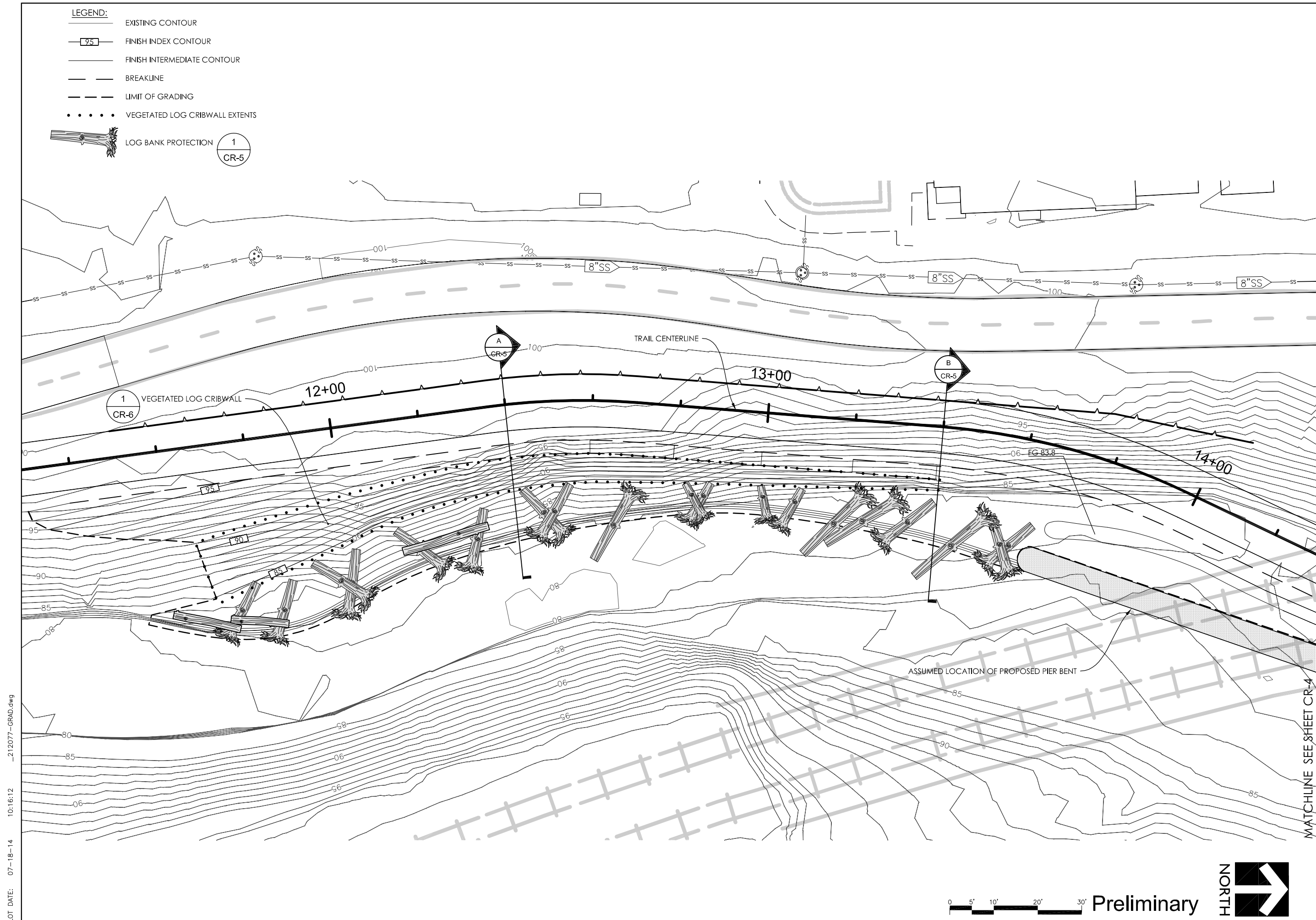
SECTION MANAGER:
JAN PALAJAC
CPHS ID NUMBER:
XXXXX
SHEET TITLE:

RETAINING WALL RW2
PLAN AND ELEVATION

SHEET NUMBER:

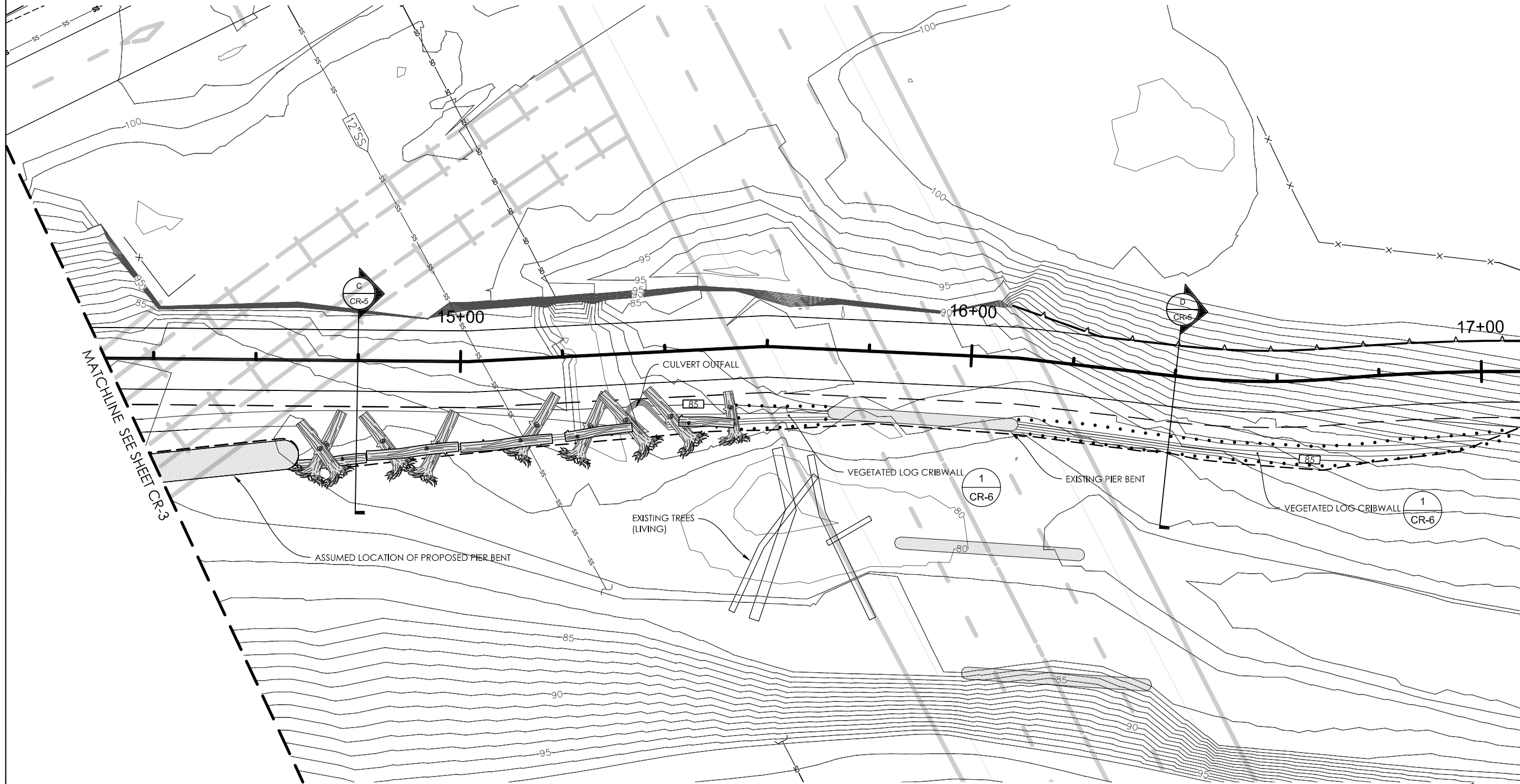
S-2

SHEET X OF 23



PLOT DATE: 07-18-14 10:15:36 _212077-GRAD.dwg

- LEGEND:
- EXISTING CONTOUR
 - FINISH INDEX CONTOUR
 - FINISH INTERMEDIATE CONTOUR
 - BREAKLINE
 - LIMIT OF GRADING
 - VEGETATED LOG CRIBWALL EXTENTS



CITY OF
SAN JOSE
CAPITAL OF SILICON VALLEY
City Facilities and Architectural Services

**Balance
Hydrologics, Inc.**
800 Bancroft Way - Suite 101
Berkeley, CA 94710
tel (510) 704-1000 • fax (510) 704-1001
www.balancehydro.com

DAVID SYKES
DIRECTOR OF PUBLIC WORKS

PROJECT TITLE:

**DEPARTMENT OF PUBLIC WORKS
SAN JOSE, CALIFORNIA**
City Facilities Architectural Services Division
**LOS GATOS CREEK TRAIL
REACH 5B/C**

REV	DATE	DESCRIPTION
△		
△		
△		
△		
△		
△		

SCALE:
AS-NOTED

DATE:
JULY 2014

SECTION MANAGER:
JAN PALAJAC

CPLS ID NUMBER:
XXXX

DRAWN BY:
D. JEPSEN

CHECKED BY:
E. RIEDNER

SHEET TITLE:

GRADING PLAN

SHEET NUMBER:

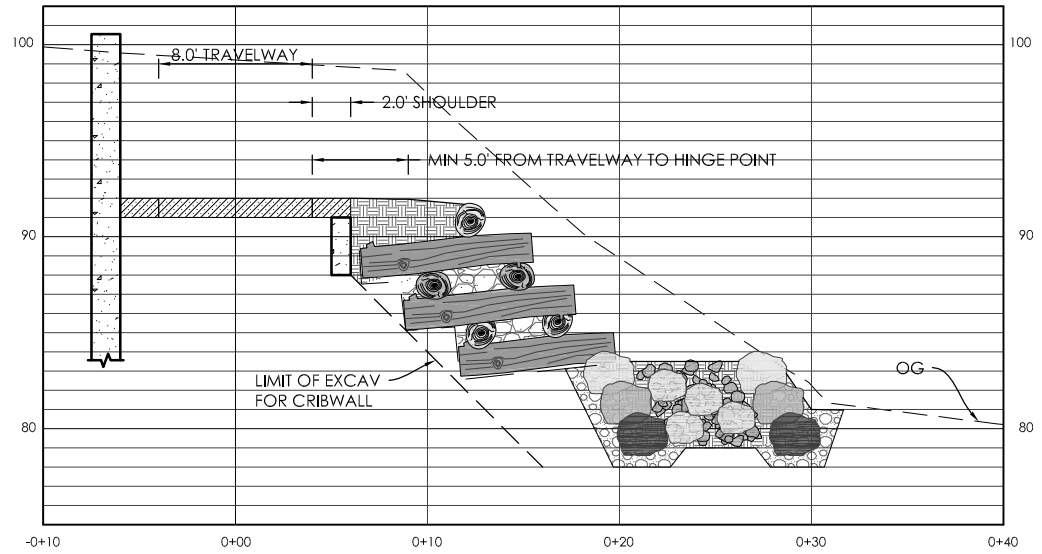
CR-4

SHEET

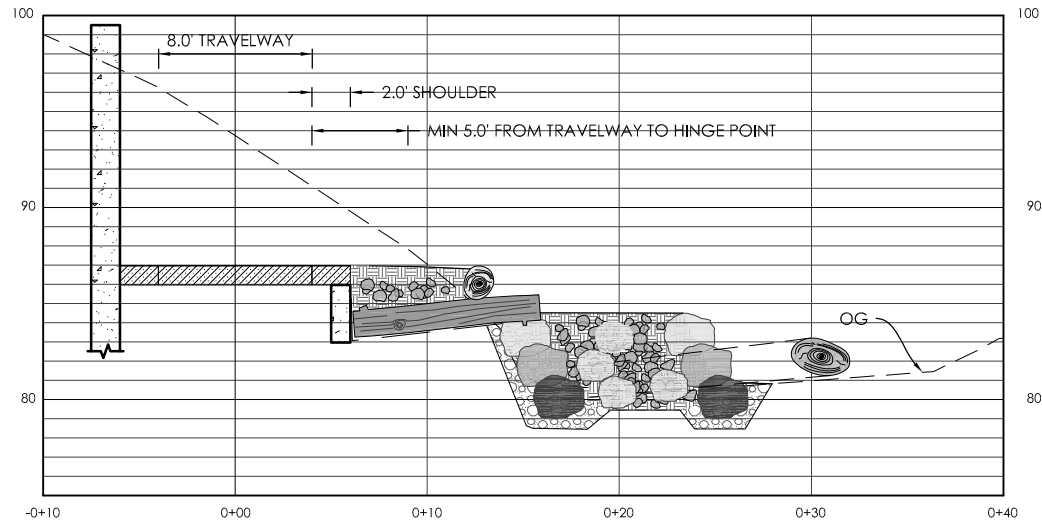
OF

23

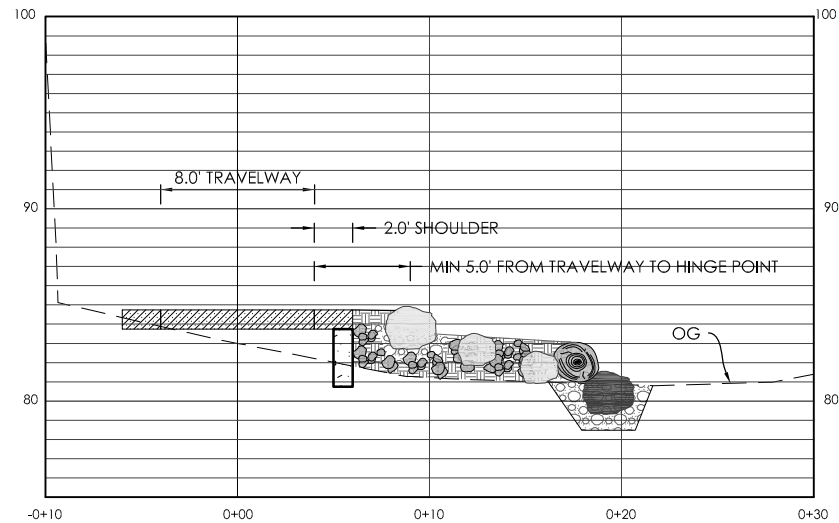
PLOT DATE: 07-18-14 10:29:03 _212077-SECT.dwg



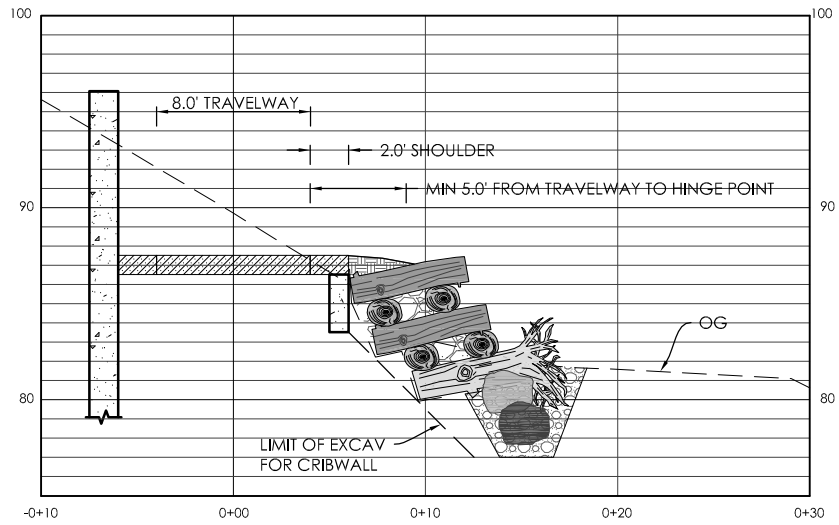
A SECTION AT STA 12+40
1" = 10'-0"
CR-3



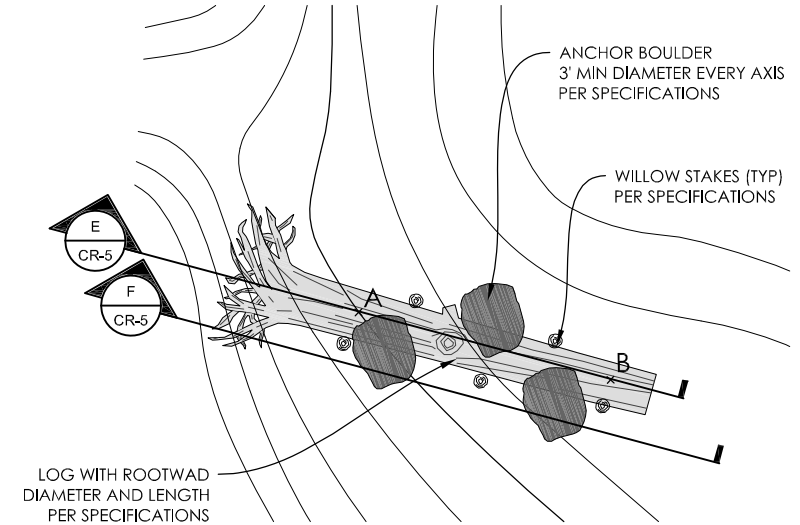
B SECTION AT STA 13+40
1" = 10'-0"
CR-3



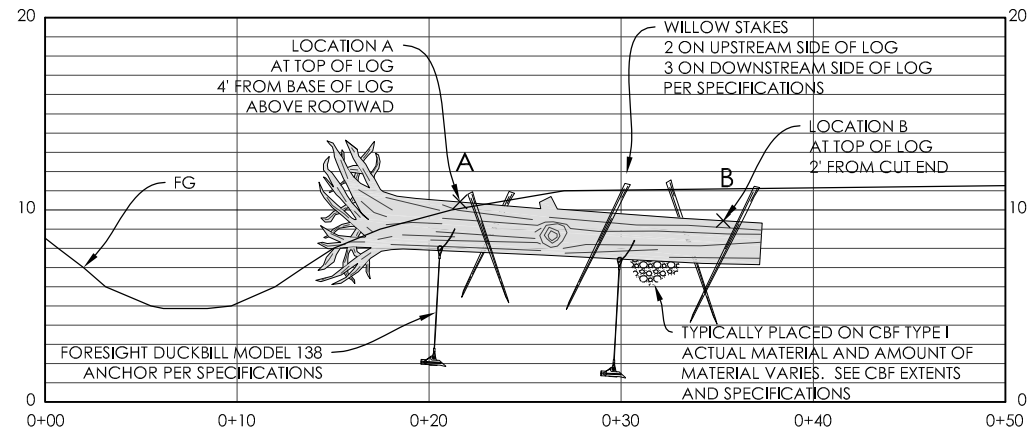
C SECTION AT STA 14+80
1" = 10'-0"
CR-4



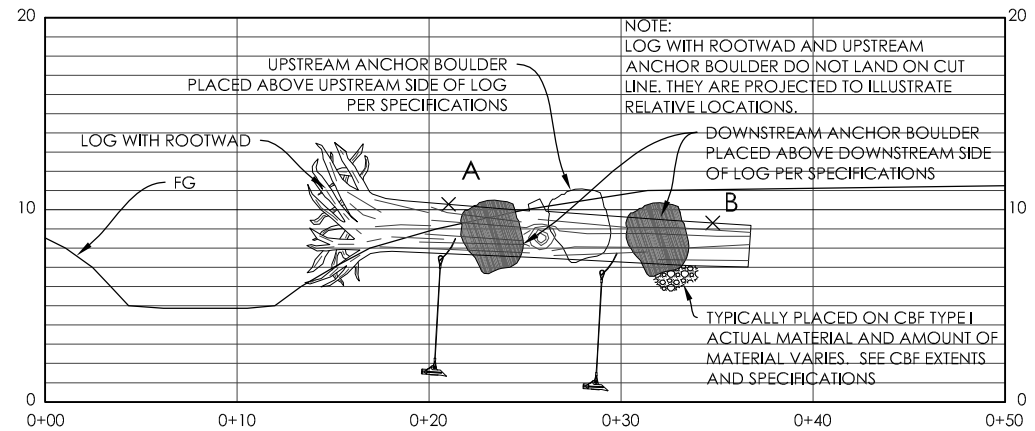
D SECTION AT STA 16+40
1" = 10'-0"
CR-4



1 LOG PLACEMENT TYPICAL
1" = 5'-0"
CR-3 CR-4



E LOG STAKING AND ANCHORING
1" = 5'-0"
CR-5



F LOG AND BOULDER PLACEMENT
1" = 5'-0"
CR-5

Preliminary

REV	DATE	DESCRIPTION
△		
△		
△		
△		
△		
△		

SCALE:	DRAWN BY:
AS-NOTED	D. JEPSEN

DATE:	CHECKED BY:
JULY 2014	E. RIEDNER

SECTION MANAGER:
JAN PALAJAC

CPHS ID NUMBER:
XXXX

SHEET TITLE:

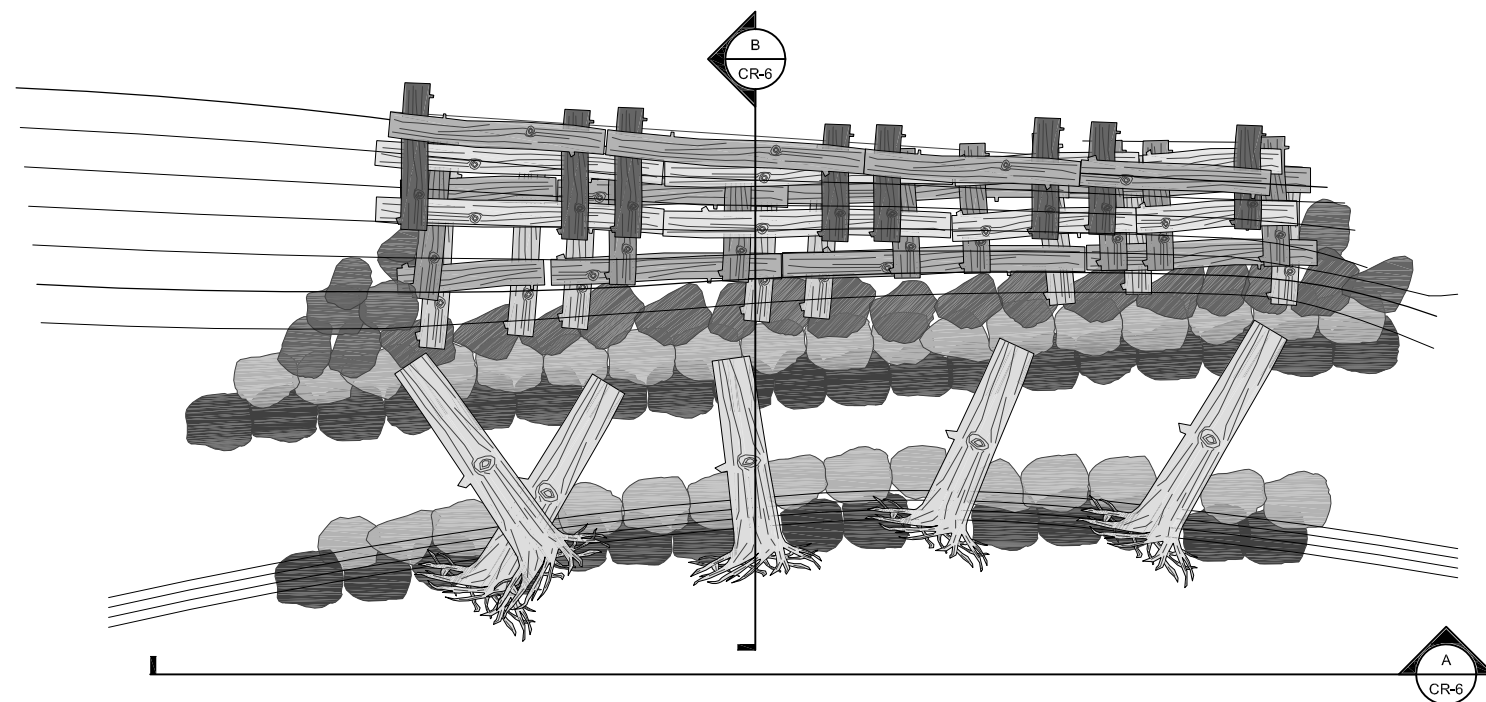
REV	DATE	DESCRIPTION
1		
2		
3		
4		
5		
6		

SCALE: AS-NOTED	DRAWN BY: D. JEPSEN
DATE: JULY 2014	CHECKED BY: E. RIEDNER

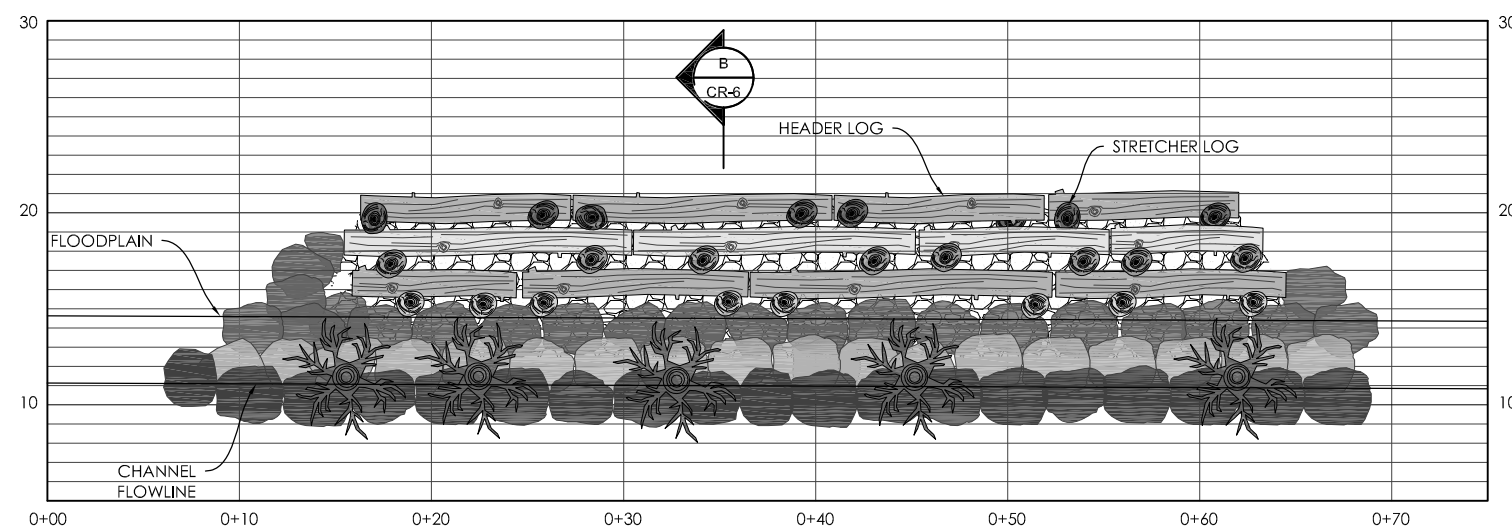
SECTION MANAGER:	JAN PALAJAC
CPMS ID NUMBER:	XXXX

SHEET TITLE:

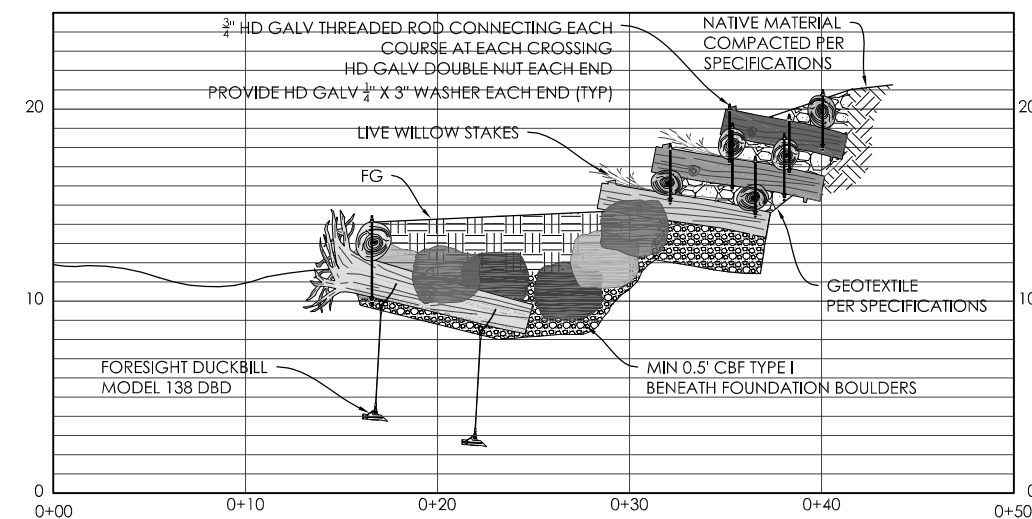
CREEK IMPROVEMENT PLAN DETAILS

SHEET NUMBER:CR-6SHEET OF 23

1 VEGETATED LOG CRIBWALL TYPICAL
1" = 5'-0"



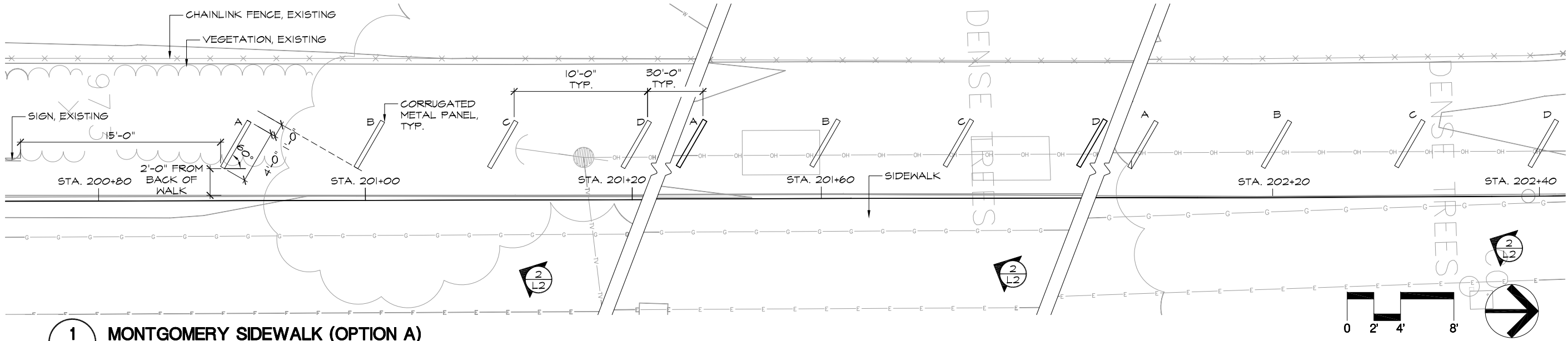
VEGETATED LOG CRIBWALL ELEVATION



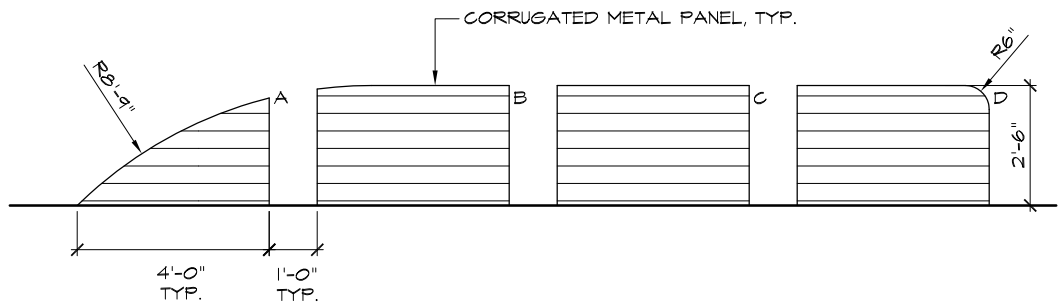
B VEGETATED LOG CRIBWALL SECTION
1" = 5'-0"
CR-6

Preliminary

PLOT DATE: 07-17-14 10:05:13 13055sc.dwg



1
L2
MONTGOMERY SIDEWALK (OPTION A)
PLAN



2
L2
MONTGOMERY SIDEWALK (OPTION A)
ELEVATION



3
L2
MONTGOMERY SIDEWALK (OPTION B)
ELEVATION

Preliminary



REV	DATE	DESCRIPTION
△		
△		
△		
△		
△		
△		

SCALE: AS-NOTED	DRAWN BY: J. CABECA
DATE: JULY 2014	CHECKED BY: D. VON RUEDEN
SECTION MANAGER: JAN PALAJAC	
CPHS ID NUMBER: XXXX	

SHEET TITLE:

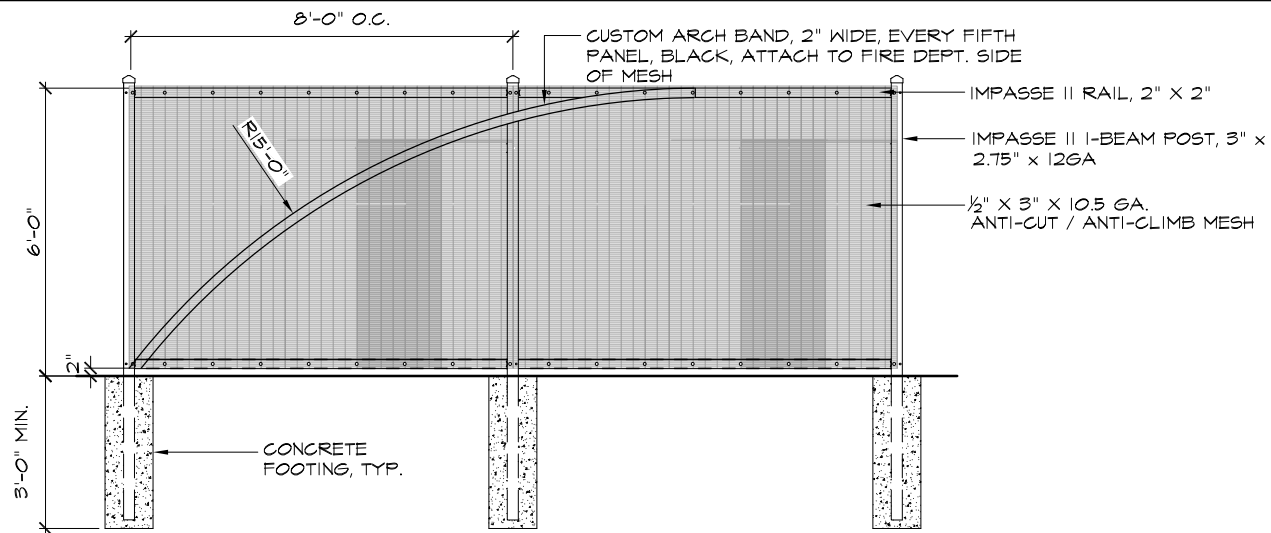
SIDEWALK IMPROVEMENT

SHEET NUMBER:

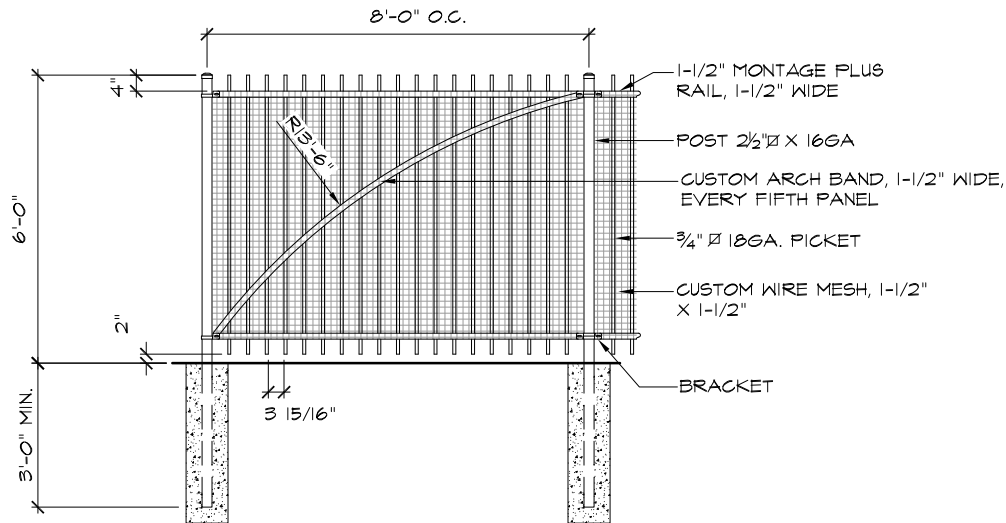
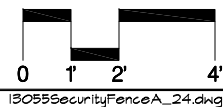
L-2

SHEET OF 23

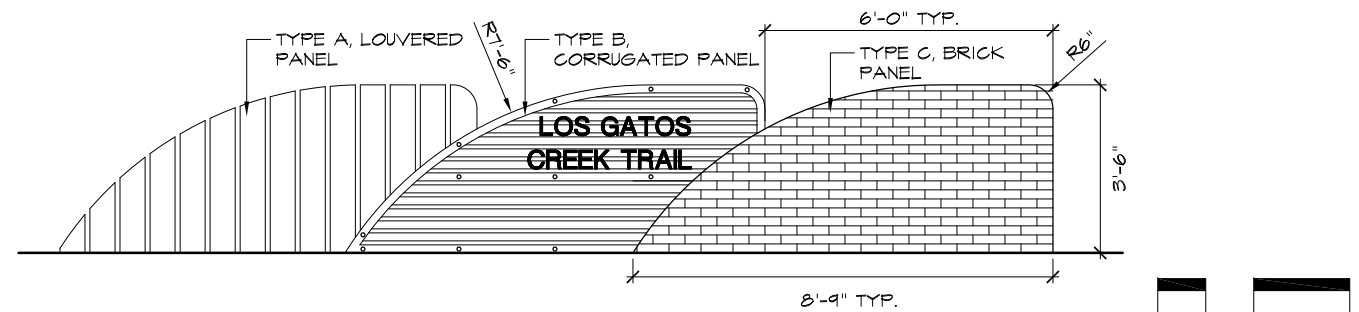
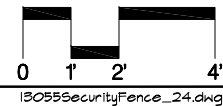
PLOT DATE: 07-17-14 10:05:13 13055sc.dwg



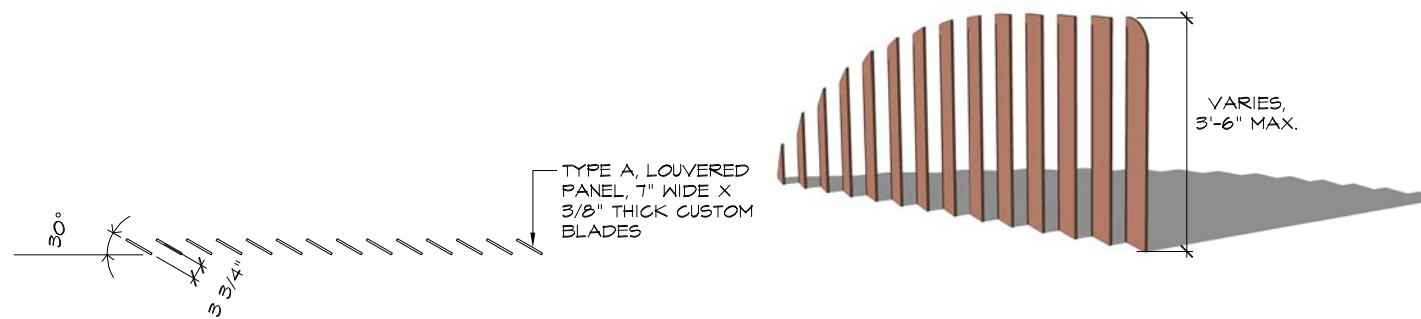
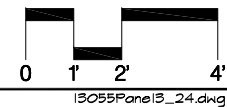
1
L3 **SECURITY FENCE - OPTION A**
ELEVATION



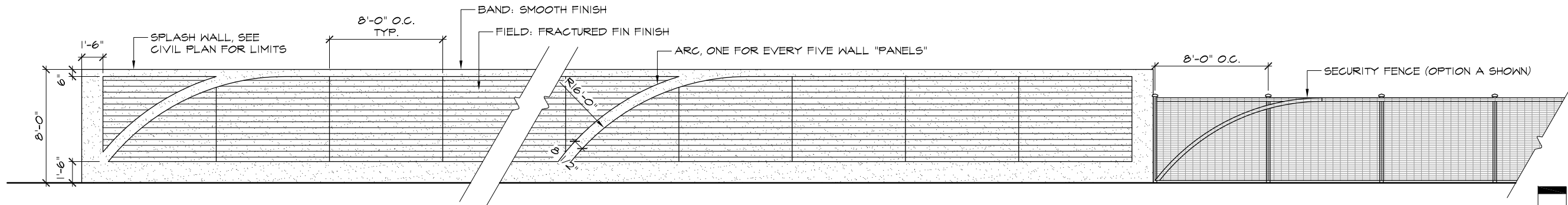
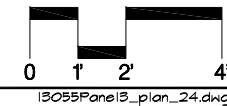
2
L3 **SECURITY FENCE - OPTION B**
ELEVATION



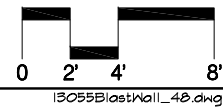
3
L3 **GATEWAY PANELS**
ELEVATION



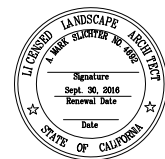
4
L3 **GATEWAY PANELS**
PLAN



5
L3 **FIRE DEPARTMENT EDGE**
ELEVATION



Preliminary



REV	DATE	DESCRIPTION
△		
△		
△		
△		
△		
△		

SCALE:	DRAWN BY:
AS-NOTED	J. CABECA
DATE:	CHECKED BY:
JULY 2014	D. VON RUEDEN

SECTION MANAGER:
JAN PALAJAC
CPLS ID NUMBER:
XXXX
SHEET TITLE: