

From: [Arroyo, Juliet](#)
To: [Becky Urbano](#); [Sarah Hahn](#)
Cc: ["Charles Chase"](#); [Hill, Shannon](#); [Keyon, David](#)
Subject: Downtown West Historic - follow ups
Date: Friday, February 28, 2020 4:22:42 PM
Attachments: [Lake House DistrictEvaluation_rev071306a.pdf](#)
[LakeHouseDistrictRecord_rev070606.pdf](#)
[454 W San Fernando, DPR Lakehouse District.pdf](#)

Hello

Following up with:

*Lakehouse District – attached is the Context/Study, District Record and DPR form for the 454 W San Fernando. Let me know if you need anything else for Lakehouse. I have the complete binder with DPR forms.

*Hellwig/Taiko – I have not been able to do research on the original builder/designer, but my comments include that based on my site visit, I see the building as masterfully designed and has high artistic value. If it is not NR eligible, it may be because of integrity, not criteria. I feel all of the DPR forms on the property were just recycling previous limited evaluation DPR forms since they were all part of a larger survey area, and didn't take the time to look at the building. This property needs a focused evaluation, but for the Downtown West CEQA document, the existing information is adequate. It was called a Minimal Tradition in 1993 which is incorrect. I would classify the style as English Tudor Revival, and I see it as an artistically done adaptation for an industrial/commercial building. Because the building is identified as a CEQA historic resource already and because the project does not propose demolition or do inappropriate alterations, the research and evaluation can be done at a future time when a project is proposed for the building.

200-Foot – I am still going through the table provided, and will finish for sure by Monday

Let me know if there is any additional information needed.

Thanks Juliet

Juliet M. Arroyo
Historic Preservation Officer
City of San Jose
408-535-7847

HISTORIC DISTRICT STUDY

Lake House Neighborhood
San José

Prepared for:
City of San José
Department of Planning, Building, and Code Enforcement
801 North First St. Room 400
San José CA 95110

Attn:
Patrice Shaffer



Prepared by:

ARCHIVES & ARCHITECTURE
Heritage Resource Partners
Franklin Maggi, Preservation Planner
Charlene Duval, Public Historian
Leslie A. G. Dill, Architectural Historian
<http://www.archivesandarchitecture.com>

June 13, 2006

TABLE OF CONTENTS

INTRODUCTION	3
PLANNING BACKGROUND	4
Historic Districts	5
San José Policy Framework	6
Proposed District Boundaries	7
SUMMARY STATEMENT OF HISTORICAL SIGNIFICANCE	8
HISTORICAL BACKGROUND AND SETTING	9
Early Settlement	9
The French Gardens and the Lake House Hotel	11
The Lake House Tract	17
RESIDENTIAL DEVELOPMENT	19
General Residential Development Patterns	19
HISTORIC DISTRICT ANALYSIS and STATEMENT OF SIGNIFICANCE	21
SOURCES CONSULTED AND CITED	22

*photo previous page – early view at the front porch of 454 West San Fernando St., courtesy of Arata family.

INTRODUCTION

This report evaluates the potential for establishment of a city landmark historic district in the Lake House neighborhood located west of San José's downtown core. The *Historic District Study* that follows is intended to present research and historical evaluation of the neighborhood as a place of historic significance, providing detailed information to enable initiation of designation proceedings if the local community and the San José City Council concur with this planning initiative.

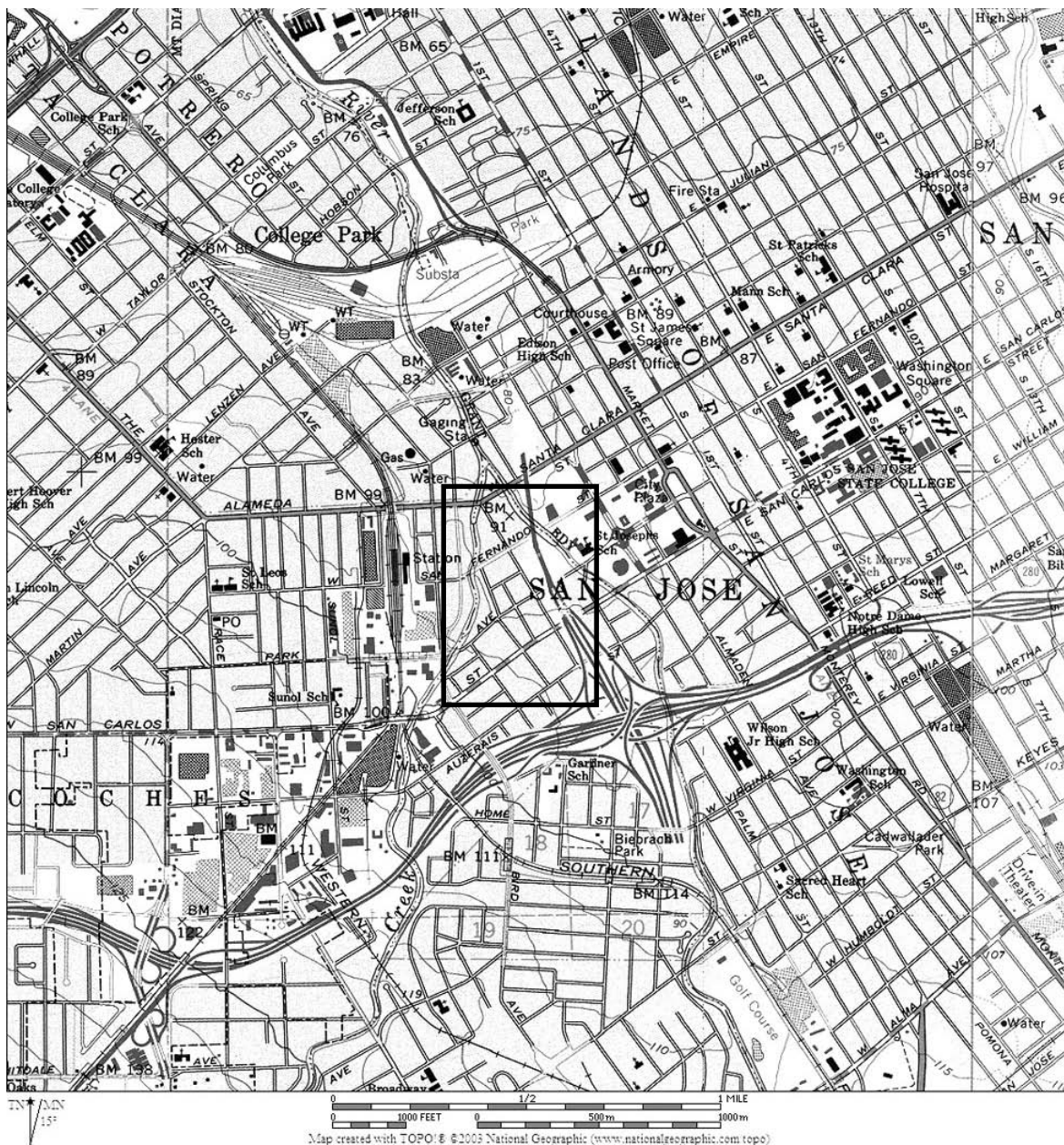


Figure 1: USGS topographic map / San Jose West / East composite – photo revised 1980

PLANNING BACKGROUND

Designation of the Lake House neighborhood as a local city landmark district has been a priority of the City of San José Historic Landmarks Commission since the early 1990s. During the preparation of the Environmental Impact Report for the Santa Clara Valley Transportation Agency's Vasona Light Rail extension, historians Ward Hill and Glory Anne Laffey found portions of the neighborhood to be eligible for the National Register of Historic Places as a historic district. This area has a large number of late nineteenth and early twentieth century residential structures; most built originally as single-family homes. The neighborhood has a continuity of architectural style and scale, and has a high level of integrity to its original neighborhood character. The neighborhood developed between 1885 and 1925, and comprises predominantly Victorian-era styled buildings of the Queen Anne period with some Craftsman and Period Revival styles found both within and surrounding the 1891 Lake House Tract. Within this neighborhood are buildings designed by local architects J. O. McKee, Jacob Lenzen, Charles F. Carto, and Wolfe and McKenzie, some of San José's most prominent residential designers of the late nineteenth and early twentieth century.

The Lake House neighborhood is within the area covered by the Diridon/Arena Strategic Development Plan, adopted by the San José City Council. The objectives of the Plan are to:

- Create a pattern of development that reinforces transit.
- Provide a diversity of housing opportunities that establishes viable and livable neighborhoods.
- Preserve viable industrial and commercial-service uses.
- Create an extensive system of pedestrian pathways and open space.
- Balance circulation needs with considerations of livability.
- Complement and extend adjacent residential and commercial areas surrounding the Diridon/Arena area.

The Lake House neighborhood is also located within the Delmas Park Strong Neighborhoods Initiative (SNI) planning area, and this *Historic District Study* is being conducted as a part of a number of neighborhood improvement initiatives originating out of the SNI planning committee. San José's Strong Neighborhoods Initiative includes 19 planning areas. The SNI is a partnership between the City of San José, its Redevelopment Agency, community residents, and business and property owners - to improve neighborhood conditions, enhance community safety, facilitate community services and strengthen neighborhood associations. The City, the Redevelopment Agency, and the community are presently working collaboratively to achieve the future vision for each SNI area by implementing the recommended actions and priorities established in each of the SNI areas' neighborhood improvement plans.

The Delmas Park planning area is a mix of residential, commercial and light industrial land uses. Most of the housing consists of single-family dwellings built prior to the 1920's. However, in the 1930's the City zoned the majority of the area for light industrial. As a

result, established residential neighborhoods such as Lake House have been impacted by small-scale industrial and service uses, auto sales, and auto repair centers. In 2004, Lake House and portions of Delmas Park south of West San Carlos Street were rezoned to residential. Nonetheless, the incompatible mix of existing land uses remains and contributes to low property values, especially considering the neighborhood's proximity to Downtown, transit and other urban amenities.

Over time, the Delmas Park neighborhood, under the Delmas Park Neighborhood Improvement Plan, envisions itself as more pedestrian- and transit-oriented, with community-focused commercial corridors, and well-lit, tree-lined streets. Existing residential areas will be protected and enhanced. Light industrial and auto service land uses will be phased out and replaced with development that complements adjacent homes. On-street parking will be preserved for residents. Sensitive infill development will increase the diversity of the resident population, offering housing opportunities for seniors and residents with a variety of income levels.

The vibrant and growing downtown presents challenges to the revitalization and long-term viability of the Delmas Park neighborhoods. The Delmas Park Neighborhood Advisory Committee (NAC) has indicated an interest in pursuing conservation areas such as the Lake House neighborhood as a means of preserving the unique residential character of the area. It is the intention that any future proceedings initiated towards historic district designation will originate from this neighborhood planning process.

San José has three locally designated residential historic districts: the Hensley Historic District located north of downtown, the River Street Historic District, located on West Julian Street near the Guadalupe River, and the Reed Historic District south of San José State University. Of the three existing residential city landmark historic districts, the River Street Historic District consists primarily of residential structures although most of them have been converted to commercial use. The Hensley District (with slightly different boundaries) is also listed on the National Register of Historic Places; the only such residential district in San José with this status. The Reed Historic District was most recently designated in June 2006.

Also within San José are a number of conservation areas. Three of these, Naglee Park, Palm Haven, and Shasta/Hanchett (Hanchett and Hester Park), were identified in the early 1980s as conservation areas. In 2004, the San José City Council adopted a detailed enabling ordinance for the conservation area designation process, and in late 2004, the City Council approved designation of the Market-Almaden Conservation Area within the Market-Almaden SNI at the request of the neighborhood planning committee.

Historic Districts

Local historic districts are most often created to prevent unregulated and insensitive changes to definable areas that possess an historical continuity of time, place, and pattern of development. In the recent past, since adoption of the 1966 National Historic Preservation Act (NHPA), the National Register of Historic Places has been the principal

vehicle for the creation of historic districts in America. The U. S. Department of the Interior has established criteria for determining the significance of historic properties, based on the ability of a building or site, or of structures, districts, or objects to convey the quality of significance in American history, architecture, archeology, engineering, and culture. These properties must possess integrity of location, design, setting, materials, workmanship, feeling, and association, and convey an important aspect of the history of the nation.

A local historic district is similar to a National Register district in that local districts also identify historically and architecturally significant buildings, but this recognition can be based on locally developed, rather than nationally established criteria and policies. Local significance, attitudes, and contemporary events affect what a community views as important. Local designation also can provide greater protection for local resources as is the goal under the City of San José Historic Preservation Ordinance. Through locally implemented design review processes, changes to historic resources can be regulated in a sympathetic way to protect and reinforce the historic character of the district.

San José Policy Framework

The City of San José has adopted goals meant to promote a greater sense of historic awareness and community identity and to enhance the quality of urban living through preservation of historically and archaeologically significant structures, sites, districts and artifacts. San José 2020 General Plan goals and policies on cultural resources include a specific Policy #4 pertaining to historic districts:

Areas with a concentration of historically and/or architecturally significant sites or structures should be considered for preservation through the creation of Historic Preservation Districts.

This mechanism for implementation of the historic district policy is defined within the City's ordinance on historical preservation within Chapter 13.48 of the Municipal Code. Conservation Areas, which are listed and defined within the City's Historic Resources Inventory, are "established to provide a designation tool to recognize as well as to preserve and enhance the character of qualifying neighborhoods" according to the ordinance, as amended April 6, 2004.

In year 2000, the City Council adopted an ordinance amending the Zoning Code to include discretionary review of certain single-family house permits. These permits are required for residential remodeling and new construction when maximum height or floor area ratios are exceeded, or when the property is listed on the Historic Resources Inventory.

In Spring 2006, the City Council updated its policy for the preservation of historic landmarks. Originally adopted on December 8, 1998, this revision, adopted May 23, 2006, strengthens and clarifies language that gives high priority to the preservation of candidate or designated landmark structures, and also expands that policy to sites and districts. The

policy change also facilitates the consideration of City, State, and Federal financial incentives for preservation and/or adaptive reuse of these structure, sites and districts.

Proposed District Boundaries

The proposed Lake House City Landmark Historic District is generally bounded on the north by West San Fernando Street, on the east by State Highway 87 and the VTA Light Rail right-of-way, on the west by Los Gatos Creek, and on the south by the rear property lines of lots on the north side of Park Avenue and Lakehouse Avenue next to the Parkside condominium complex at Delmas and Park Avenues. This boundary is slightly larger than the area that was first identified as National Register eligible by Ward and Laffey in the late 1990s. The area incorporates a small number of properties outside the original Lake House Tract, that have over time become closely associated with the tract development due to proximity and urban context. More specifically, the boundaries are as noted on the map below:

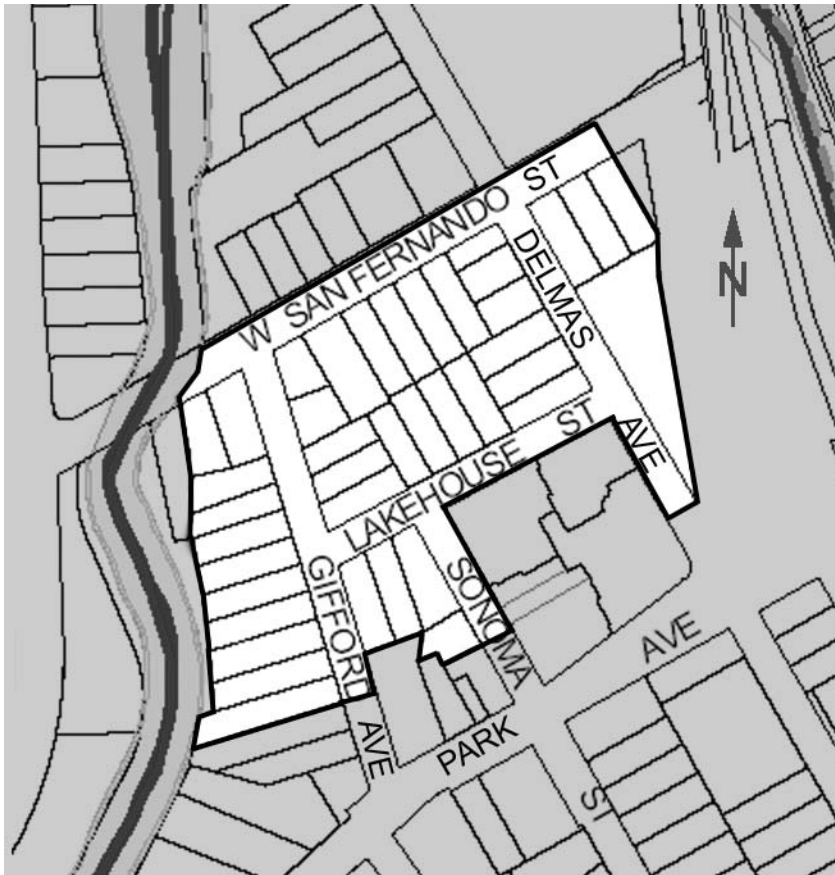


Figure 2
*Properties within the proposed
Lake House City Landmark
Historic District*

*Enhanced Map from City of
San José Planning Services
Division (not to scale)*

An additional four properties were evaluated as a part of the district study, but are not recommended for inclusion. Those properties lie on the north side of Park Avenue between Gifford Avenue and Sonoma Street.

SUMMARY STATEMENT OF HISTORICAL SIGNIFICANCE

The Lake House neighborhood developed adjacent to and within the city limits of San José as a mostly single-family residential area between the mid-1880s and the mid-1920s. The Lake House Tract itself was created in 1891 within an area known as the Delmas Survey.

Recreational park and plant nursery uses had occurred in this area to the west of downtown San José during the Early American Period (1846-1869), but those uses were removed as new residential areas of the central city expanded westward across the Guadalupe River during the later part of the nineteenth century. Although an early neighborhood had begun to form along Delmas Avenue prior to 1880, the extension of West San Fernando Street across the Guadalupe River in 1880 was followed by a period of sustained residential development that continued for about 40 years, with most of the residential construction in the study area occurring during the 1890s. Residential development in the area prior to 1885 is no longer evident in the immediate vicinity of the neighborhood, and the area was built-out by 1925.

The neighborhood shares its development pattern with some of the older neighborhoods west of San José's downtown, although this particular area is visually distinct due to twentieth century development that has removed the remnants of historic residential development on adjacent blocks. The distinctive character of the Lake House neighborhood continues to retain an earlier sense of time and place reflective of residential development within the area at the edge of the original city of San José, between 1885 and 1925.

HISTORICAL BACKGROUND AND SETTING

Early Settlement

The proposed Lake House City Landmark Historic District area consists of 39 properties located at the west end of and to the west of San José's Original City. The original city limits of San José, established in 1850, were the result of a number of surveys that occurred in the late 1840s that created the greater downtown frame as we know it today.

The *Pueblo de San José* was the first civil settlement established by Spain in Alta California (Upper California). Its primary function was to supplement the crops grown within the Franciscan mission system and to support the Spanish military garrisons at Monterey and San Francisco. During the Spanish Colonial Period (1777-1821), the lands west of the pueblo were under the control of Mission Santa Clara. Within a few years after Mexico's independence, the mission lands were secularized, and the area south of The Alameda was soon a part of the evolving rancho system that developed during the Mexican Period (1822-1846).

The western boundary of the Original City ran from a point in the early Commodore Robert Stockton Rancho *El Portrero de Santa Clara* at the northwest (near McKendrie and Spring Streets) to the southeast along a straight line that ended in Pueblo Farm Lot #5 owned by Charles White in the 1840s and later by Margaret Reed. In 1876, this southwest corner of the city was within the orchard of Martha (Patty) Reed and her husband, Frank Lewis, an engineer. The westerly city limits bisected what is now the Lake House Tract just to the west of Delmas Avenue.

The reasoning behind the establishment of this line is not well understood. The line follows the northwest to southeast orientation of the city's street grid. To the west of the Guadalupe River had originally been the lands of Mission Santa Clara and had followed an alignment up the Guadalupe to its headwaters near what is now Auzerais Street, following a slough westward to where it reached the mouth of the Los Gatos Creek. The area to the south was generally known as The Willows (today known as Willow Glen and Gardner Districts) and was a swampy area west of the present Guadalupe River from Curtner Avenue to Auzerais Street. A portion of mission lands directly to the west of the pueblo was granted to Roberto Balermينو, a Native American formerly associated with Mission Santa Clara. Balermينو had received permission to occupy the area that had been a part of the pasturelands of the mission as early as 1836. He was granted the rancho by Mexican governor Micheltoreno on March 12, 1844. The grant covered 2,219 acres in an area to the west of what is now downtown San José west of the Guadalupe River. Balermينو (commonly referred to simply as Roberto) had lived in an adobe that is still extant on the east side of Lincoln Avenue just south of Interstate 280. Roberto conveyed the rancho to Antonio Suñol in 1847, shortly after the American occupation of California (Delgado 1977; Arbuckle 1983).

Antonio Maria Suñol, a native of Barcelona, had left Spain by 1810 and immigrated to France where he attended school and later served in the French Navy. He was on the

French ship Bordelais when it arrived in San Francisco in 1817, settling in San José in 1818. He received a patent on the title to *Rancho de Los Coches* on December 24, 1856.

The lands of the Los Coches Rancho nearest to downtown San José were adjacent to what would become San José's Fourth Ward in the 1860s. The larger unincorporated area to the west has been identified in a number of ways over the years; as the Suñol Addition, Western Addition, the Hester District, as part of "The Willows", and when it was annexed to the City of San José in 1911, it was referred to as the Gardner Annexation. Residential lot subdivisions such as the Lake House Tract began to appear in the early 1890s, much of the initial development occurring in unincorporated Santa Clara County.

Suñol sold the northeasterly nose of his rancho (that was within the city limits) to Antoine Delmas by 1852. This area was between West Santa Clara Street to the north and an early slough to the south that curved between Los Gatos Creek and the Guadalupe River (just south of where Lakehouse Avenue is today). The west boundary was the city limits and the east boundary was the Guadalupe River. To the south of the Delmas land and the slough was "Suñol's Enclosure," that appears on an 1851 survey by the City Engineer (Lewis 1851). This area eventually was part of Suñol's Partition of his rancho into three parts, and would later be called Suñol's Addition. The area of Suñol's Addition between Park Avenue and the slough that defined the south end of the Delmas property was owned by Frank Schilling (east of Sonoma Street) and French American John Martin (west of Sonoma Street) when the Lake House Tract was developed in the 1890s.

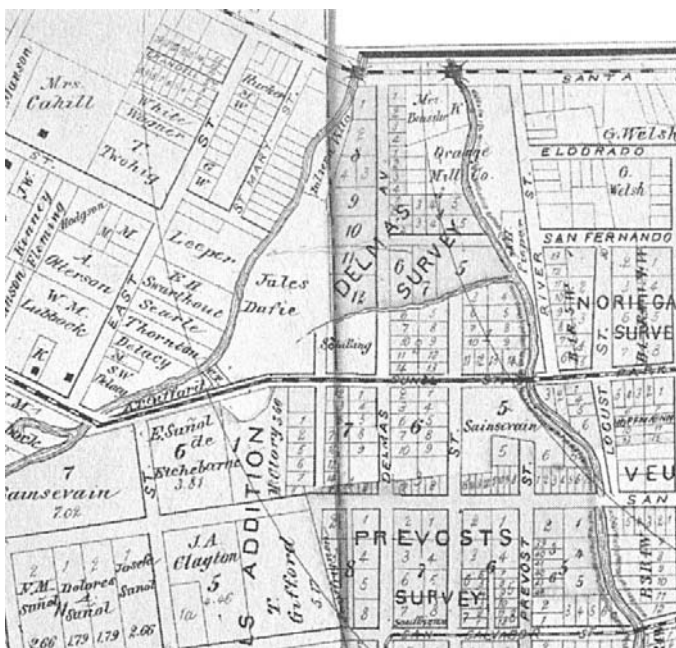


Figure 3: 1876 Thompson & West Atlas showing the lot pattern of the Delmas Survey. Jules Dufie lands are the west portion of the Lake House Tract.

The land to be owned by Antoine Delmas was outlined in 1851 in another map by Lewis that was drawn at the request of Oliver Magnant, who was requesting permission at that time to operate a flourmill along the Guadalupe River. Then, still identified as Suñol's land, the map shows Suñol's flourmill on the east bank of the Guadalupe River just north of where the West San Fernando Street bridge would later be built. A tannery was on the west bank just to

the north (Detlefs 1985).

Under Delmas's ownership during the 1850s to 1870s, this area grew to become known as the French Gardens; a commercial nursery operation that also served as a center of local French culture.

The French Gardens and the Lake House Hotel

During the Early American Period (1846-1869), many French immigrants who came to California during the Gold Rush settled in San José. About 30,000 arrived between 1849 and 1851, with an all-time high of 20,000 coming to America in 1851 alone. This spike in immigration was partly due to changing economic conditions in France, but also was catalyzed by the opportunism of the times. Since the end of the Napoleonic Wars in 1815, French immigration to the United States had typically been extremely small, with fewer than 5,000 French immigrants a year. Conditions in France have historically been considered humane and prosperous, so immigration to France had exceeded emigration out, with the foreign population of France growing annually over time.

Approximately 80% of French people consider themselves Roman Catholics, and in San José, the new arrivals found a Catholic dominated culture that had existed for over half a century since the occupation by Hispanic settlers from New Spain. St. Joseph's first pastor at mid-century, Padre Pinyero, had lived in France, and his fluent French made the new French settlers feel at home. The mild climate, rich soil, and the high water table enabled these newcomers to exploit the climate and setting with new vineyards and orchards typical to their homeland (Pierce 1990).

Antoine Delmas, the "master of the French nurserymen in San José," left France in 1849 and settled in San José about 1851, shortly thereafter purchasing a portion of the northeast corner of the Los Coches Rancho from Antonio Maria Suñol¹. Suñol's early exposure to French culture and his prominent place within the economy of the Pueblo and early American city of San José enabled French culture in San José to nurture and grow. French settlers such as Antoine Delmas with the help of early residents such as Suñol and pre-Gold Rush French immigrants such as Pierre Sainsevain and Clement Colombet were able to quickly involve themselves in the local economy, most of them settling on the west side of town. Other early pueblo residents of the Spanish and Mexican periods had ancestral ties to eighteenth century France and the Basque region via New Spain.

Antoine Delmas had an important role in California's early agricultural history as an innovating viticulturalist, as he was the first to directly import European and New England grape stock to the area. During the early 1850s, he had originally planted 14,000 local mission grape vines, and then imported 10,000 shoots of 80 varieties of grapes in 1852-1853, grafting onto local rootstock. His grapes won more first places at competitions in Northern California, unmatched by any other grower (Sullivan 1982; 1999). He introduced the use of elemental sulfur to fight mildew, and imported some of the first authentic European winery and distillery equipment into the state in 1860. Although Delmas was never a large-scale commercial vintner, his pioneer nursery work helped establish certain grape varieties in California for use in developing the California wine industry. He made history as one of the discoverers of the Zinfandel as a superior wine

¹ In 1854, Antoine Delmas was assessed for 18 acres at this location, including \$1000 in land and \$3000 in improvements. By 1862, his holdings had been reduced to 11 acres, and what would be known as Delmas Avenue is referred to as "rd to Willows."

grape, based on the New England grape called Black St. Peter's that he grafted onto mission grape stock in 1861 (Sullivan 1982).

Delmas constructed a house on his property near Santa Clara Street and sent for his family who were still in France, a residence at which they remained until about 1875². By 1858, Delmas had a large commercial garden on his property that included 2,000 rose bushes (Kennedy 1938). Delmas' property, situated within an area of confluence of the Guadalupe River and Los Gatos Creeks was ideal for the nursery activities that took place on the property.

Delmas' long-term intentions of the use of the property is uncertain; however, in 1862, Charles T. Healy surveyed the property into twelve lots, referred to as the French Garden tract. At some point, a street had been routed through the property to provide access from the south to the only bridge across the Guadalupe at that time - located at Santa Clara Street³. Delmas Avenue as is known today was shown on the Healy map and served as an access route south until bridges were constructed in the mid to late 1860s over the Guadalupe River at Sunol Street (now Park Avenue) and San Carlos Street (and a few years later at Auzerais Street). This survey, sometimes referred to as the Delmas Survey, showed a "laguna" or lake on the property, located between Delmas Avenue and Los Gatos Creek, running parallel to Delmas Avenue (Healy 1862a).

By the mid 1860s, Antoine Delmas began selling off some of his lots, mostly to persons of the local French American community. Such persons included Louis Bouvier, the proprietor of the Lafayette Hotel; Etienne Causterauste, Antoine Chauveau, F. Mondelet, Emille Parian, and A. Theriat. By 1870, residents along Delmas Avenue between Santa Clara and San Fernando Streets in addition to the Delmas family included French Americans Alfred Friant, a grocer; C. A. Blanchard, a butcher; saloonkeeper Peter Claussen, and A. K. Philbrook. Later, Joseph Jacquelin operated a flower nursery at the northwest corner of Delmas Avenue and West San Fernando Street until the mid-1880s, perhaps the site of the Delmas' 2,000-bush rose garden.

To the west of the Delmas property, along the eastern banks of Los Gatos Creek, was the site of the Lutzen & Villa tannery. Peter Lutzen was identified as a tanner in the 1870 census, so the tannery may have operated during the 1860s, and Lutzen resided on West San Fernando Street west of Delmas Avenue. The area south of Lutzen where the Lake House Tract would later be established adjacent to Los Gatos Creek, was land owned by

² Antoine Delmas died on August 8, 1888. By the 1880s, he was boarding with Peter Baltz and his wife on El Dorado Street. His daughter married Henry LeFranc of the New Almaden Vineyards, and his son Joseph was a merchant. His son Delphin became a prominent Yale educated attorney and Mountain View winery owner, renowned for his pro bono fight in front of the California legislature in 1882 to save the redwoods, his eloquent and successful defense of "human rights for humans only" before the U. S. Supreme Court in 1885/1886 having to do with railroad issues, and his successful defense of Harry K. Thaw in the murder case of architect Stanford White, considered the most sensational case of the first half of the twentieth century, later made into the 1955 movie *The Girl in the Red Velvet Swing*.

³ According to historian Marjorie Pierce, the street is said to have provided access for Isaac Byrd (Bird), a hops grower in the "Willows," (who had requested the street) and facilitated further subdivisions to the south within Suñol's lands.

French American Jules Dufie. Dufie and his partner A. Banfeton operated their French Garden Nursery, offering 106 varieties of apples in 1857 (Arbuckle 1985). In 1885, Jules A. Dufie and his son-in-law Peter Aquirre constructed the house now located at 436 West San Fernando St., and was perhaps a remodel/addition to an earlier Dufie home. Lutzen eventually purchased some of Dufie's land south of San Fernando Street on the east bank of Los Gatos Creek. Both Lutzen and Dufie lived in this area until their deaths in 1890 and 1907 (*San Jose Daily Mercury* 1/28/1890; 3/25/1907).

About 1868, Delmas sold Lots 9, 10, 11, and 12 of the French Garden tract on the west side of Delmas Avenue to A. Portal⁴. These lots lie to the north and south of where West San Fernando Street is located today, and includes the east portion of the future Lake House Tract between West San Fernando Street and Lakehouse Avenue⁵. It was during Portal's ownership, that a hotel called the Lake House was developed on the property (see Figure 4 below). In 1870, the proprietor of the Lake House was French American John Blanchon. The Lake House was originally located about forty feet west of Delmas Avenue where the present-day alignment of West San Fernando Street exists today (Pieper 1871). The lake shown on the 1862 Healy survey would have been located behind the building.

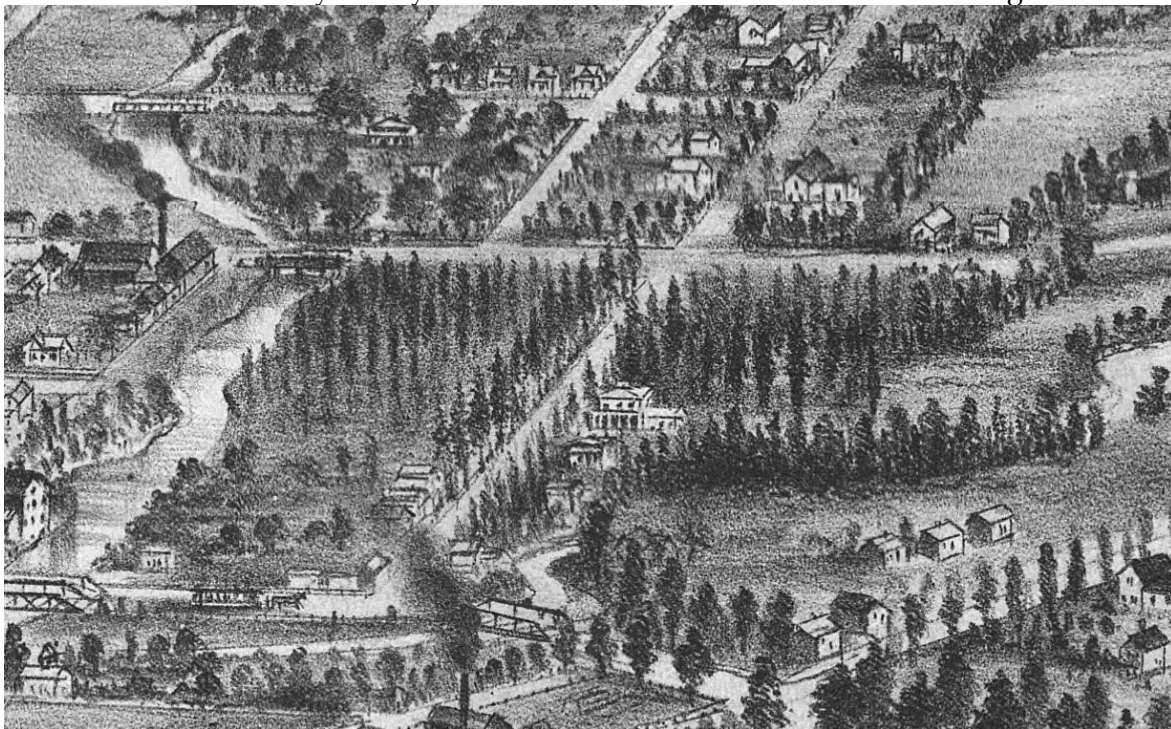


Figure 4: 1869 Bird's Eye view of the French Gardens. The Lake House is shown at center – San Fernando Street does not yet exist west of the Guadalupe River.

⁴ Little is known about A. Portal. Portal is likely Auguste Portal, born in France in 1825 and living in Sacramento by 1870, and was in San Francisco in 1880 working as a cook. By 1876, San Jose's first celebration of Bastille Day occurred at the Lake House, with local resident Jean Batiste Portal one of three prominent dignitaries at the formal supper. The relationship is not known.

⁵ In 1865-1866, Delmas had \$700 worth of improvements, although in 1868-1869, his property shows no improvements and A. Portal's Lake House first appears with \$3000 in improvements. By 1870, the Delmas lot had \$700 in improvements. It is possible - but not confirmed - that Delmas sold his house with the adjacent properties and had it moved, and built a new house for himself.

By 1870, the Lake House property was owned and operated by the Magliore Brothers--Joseph, Augustine, Baptist, and Clovis. An advertisement in the 1870 city directory announced that the popular hotel on Delmas Avenue was re-opening for the season. Many additional improvements had been made and no expense had been spared to render the hotel the "most desirable resort for families and those seeking the comforts of a quiet home for the summer." This implies that the Lake House was a "summer resort"--a lakeside resort on the outskirts of town. The Magliore brothers soon changed their last names to Bayle with Joseph Bayle remaining proprietor of the Lake House until 1887.

In 1878, a survey was conducted by J. H. Pieper showing an extension of San Fernando Street from River Street, across the river to the short existing leg between Delmas Avenue and the river, and onward west across the Los Gatos Creek to what is now known as Montgomery Street, to connect to what was then North Street. The map shows the hotel lying directly in the alignment of the proposed extension of San Fernando Street (Pieper 1878). The construction of the road in 1880 actually extended West San Fernando further west to Race Street where that alignment continues to exist today. This construction required the relocation of the Lake House south to what became the southwest corner of Delmas Avenue and West San Fernando Street (the site of the present-day Delmas Market and properties to the southeast). Apparently, the lake had been drained or was dry by this time as it ceased to be noted on maps or in records.

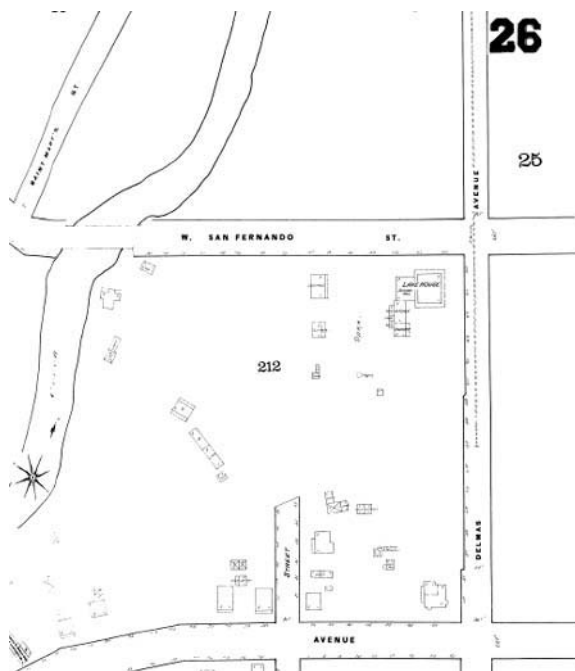


Figure 5: 1884 Sanborn Fire Insurance map. The Lake House is shown at the southwest corner of Delmas Avenue and West San Fernando Street after its early 1880s relocation.

The area behind the hotel was identified as a "park" in 1884. The Lake House hotel stood until about 1898 after the majority of the Lake House Tract was constructed. It was demolished at about that time and the underlying property re-subdivided to accommodate the construction of a corner grocery store and two houses to the south facing Delmas Avenue. The slough that divided the French Gardens and the Suñol Partition lands to the south was still shown on maps as late as the 1909 San José City Block Book, but the bridges associated with this slough appear to have disappeared by the mid-1880s (Arbuckle 1985).

The larger area surrounding Lake House between Santa Clara and San Carlos Streets and between Los Gatos Creek and the Guadalupe River, including most of the Lake House neighborhood (prior to its development) and its surroundings, was known for its park like appearance and activities. The Lake House itself was the center of social life of the local French-American community and was often the site of local Bastille Day

celebrations, the first occurring in 1876. In the 1860s, Live Oak Park was located on Louis Prevost's land between West San Carlos Street and Park Avenue (then known as Sunol Street), on the west bank of the Guadalupe River. In the early 1880s, the Neptune Swimming Club, a large swimming and public baths facility, was located in the middle of the block between West Santa Clara Street and West San Fernando Street, east of Delmas Avenue (near where the historic San Jose Water Company building is located today). By the mid-1880s, Evergreen Park was located at the southeast corner of West Santa Clara Street and Delmas Avenue. This enterprise, along with Jacquelin's flower nursery at the northeast corner of West San Fernando Street and Delmas Avenue and the Lake House hotel and grounds suggests that the park-like atmosphere was still prevalent until the late 1880s.

Other portions of Delmas' French Gardens were developed during the 1880s and 1890s, including the southeast corner of Delmas Avenue and West San Fernando Street. Houses were constructed on both sides of West San Fernando Street between Delmas Avenue and the Guadalupe River, of which three continue to exist today and have strong visual associations with the properties within the original Lake House Tract. The neighborhood housed many local merchants including local grocer Fortunato Chiappe whose still-extant house at 396 West San Fernando Street was designed by architect Theodore Lenzen. Charles Owen, son of Mercury editor J. J. Owen, built the large house at the southeast corner of West San Fernando Street and Delmas Avenue in 1888. In the 1880s, on the east side of Delmas Avenue, was the home of Gustave Brohaska and his prominent family of musicians. In 1911, his son, Theodore Brohaska, a city councilman, replaced their older home with a craftsman bungalow that remains today at 124 Delmas Ave. This house, owned by the County of Santa Clara, is San José City Landmark #HL 80-16 (resolution 52470), formally recognized in 1980 as the early home of opera star Irene Dalis after her father Peter Dalis purchased the property in 1922.

The houses north of West San Fernando Street at the north end of the Delmas Park Planning Area were demolished to accommodate new development during the twentieth century. In the early 1900s, Hubbard and Carmichael Lumber Company acquired property along West Santa Clara Street west of Delmas Avenue that resulted in demolition of older buildings in this area, including the old Delmas home site (35 Delmas Avenue). The remainder of the block was cleared for parking for the sports area. The San Jose Water Company, which had been located along the west bank of the Guadalupe River, south of West Santa Clara Street, since about 1884, has gradually expanded to encompass the entire block, eventually removing the remainder of the houses along the east side of Delmas Avenue and the north side of W. San Fernando Street, east of Delmas Avenue. The remainder of the older homes along the east side of Delmas south of San Fernando Street (south of 124 Delmas Ave.) were demolished when the Guadalupe Expressway was constructed in the 1980s, and those on the west side of Delmas Avenue south of Lakehouse Avenue were demolished also in the 1980s as a part of the Parkside condominium project.

The Lake House Tract

In 1887, Joseph Bayle (*né* Magliore) sold the Lake House property to Dr. Charles Breyfogle and Frank H. Mabury. Joseph's brother, Augustine Bayle, continued to operate the hotel until 1895 (*San Jose Mercury* 3/27/1897). After Jules Dufie's death in 1890, a large portion of his property was sold to Valentine Koch. In 1891, the property between Delmas Avenue and Los Gatos Creek, south of San Fernando Street, was subdivided into 36 lots surrounding Dufie's house lot; it was called the Lake House Tract by then-owners Mabury, Koch and Schilling (Dittrich & Parker 1891). A portion of Lutzen's property on the bank of Los Gatos Creek, John Martin's property, and the bulk of Schilling's property were excluded from the subdivision.

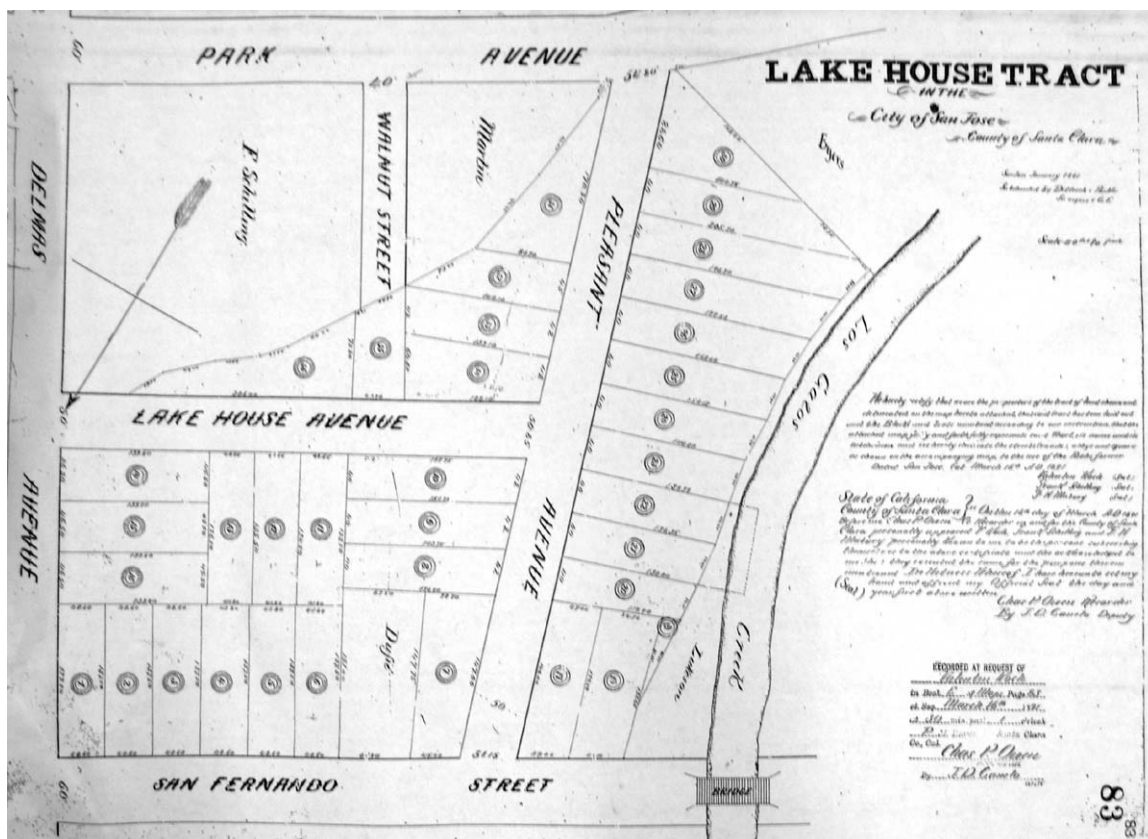


Figure 6: Map of the Lake House Tract, 1891

The Lake House hotel occupied Lots 1-6 of the Lake House Tract along San Fernando Street west of Delmas Avenue. The hotel continued to operate as a boarding house and restaurant until about 1897 when it was demolished and replaced by a grocery store built at the corner of Delmas Avenue and West San Fernando Street. Mrs. D. Bayle had built the New Lake House, a boarding house, in 1895 on Lot 6. This building, although remodeled, still stands at 426 West San Fernando Street.

During the 1890s, the Lake House Tract was developed into a community of primarily Queen Anne-style residences. Among the architects known to have designed houses in

this neighborhood were Jacob Lenzen, J. O. McKee, Charles F. Carto, and Wolfe & McKenzie. This was an area originally populated by local merchants, most notably James Leaman, the founder of Red Star Laundry, who first lived in the Lake House Hotel then occupied three homes in the neighborhood between 1893 and 1913. Homes survive that belonged to local businessmen William F. Foss, J. S. Williams, Hiram Lewis, W. J. Rogers and newspapermen Graham and Baggerly.

The western boundary of the Original City remained in-place until 1911, when the Gardner Annexation expanded the city westward. During the next two decades, the city would begin a westward expansion, with lands annexed between San Jose and Santa Clara along The Alameda in the 1920s, and consolidating in the newly formed town of Willow Glen in the 1930s. In 1929, zoning was formally established in San Jose and a zoning overlay map adopted for the lands within city boundaries at that time. The 1929 zoning had set a policy direction for the long-term transformation of the residential areas in the downtown frame. Suburban growth in the 1920s enabled by the automobile resulted in most new single-family housing construction taking place outside the original city limits. The area to the west of the downtown was targeted as a future industrial growth area to serve housing tracts being developed at the outer edges of the city core. The area now known as Delmas Park was planned to be an industrial expansion area, although development over the next few decades was focused primarily on vacant lands in the area that could accommodate the needs of new industries. A consequence however was the influx of new smaller-scaled industrial sites that were permitted within existing older residential neighborhood areas.

The re-routing of the Southern Pacific Railroad out of the downtown in the early 1930s to a new alignment at Cahill began a neighborhood transformation in the west downtown frame, furthered by construction of Interstate 280 in the 1960s that split the residential neighborhood in the Gardner District. Redevelopment activities in the western downtown core area beginning in the early 1960s, and subsequent construction of State Route 87, that began in the late 1970s, created a visual separation between the now named Delmas Park area and the downtown, serving also to distinguish the neighborhood as a distinct place.

The Delmas Park planning area, and specifically the Lake House neighborhood, remains a diverse mix of turn-of-the-century single-family residences, many converted to multi-family, and small mixed commercial/industrial uses. The boundaries are well defined by contemporary development, and will be further framed by new development in the Diridon Station/Arena area and new housing further west in the Mid-town area along Auzerai Street. The physical character of the Lake House neighborhood however, has remained relatively unchanged for the past 100 years. It now has a strong sense of historic place within the larger downtown frame of San José.

RESIDENTIAL DEVELOPMENT

General Residential Development Patterns

Residential building methods evolved quickly during the early boom period of the Gold Rush. Early sawmills established by William Campbell and Zachariah Jones in the Santa Cruz Mountains targeted the coastal redwoods that became the raw material for most residential building construction in San José for the next half century. During the early years of the twentieth century, concerns about preservation of the remaining old growth coastal redwoods redirected the timber industry to Douglas fir as the principal construction material in house building. Most of the wood construction material in the Lake House neighborhood utilizes redwood as the principle building material.

Housing growth during this early American period in San José was aided with an expansion of mills in the foothills and new production equipment that allowed for faster, larger, and less labor-intensive milling techniques. Channel rustic siding was the preferred cladding of choice for residential construction from the mid-1860s to the late 1880s, and is found on the earliest houses in the Lake House neighborhood. Balloon framing was also prevalent, remaining in use throughout the 1880s until it was gradually replaced by the modern platform framing method that began to be used in the late 1880s and through the 1890s, especially for the complex, often multi-story houses of the Victorian era.



Figure 7: historic image of Owen House at 398 West San Fernando St. (San Jose Mercury, 1896).

Victorian architecture refers to designs roughly associated with the period of the reign of Queen Victoria of Great Britain—approximately the last quarter of the nineteenth century. Within this catchphrase are a number of specific styles that have some commonality and some differences. Generally, the common traits include a sense of verticality expressed in the proportions of the massing, trim, and windows and doors. Asymmetry is also an attribute of Victorian architecture; in

particular, most houses from this era have asymmetrical towers, bay windows, gables, porches, cantilevers and other projecting objects that interrupt the basic, underlying house form. Much of this era of design focuses on elaborate decorative elements such as brackets, spindlework, Eastlake carved trim, complex shingled window surrounds, etc. The various styles are built of frame construction. Two styles of Victorian-era design are found in the study area: Queen Anne and Shingle.

Queen Anne houses and cottages are present in both stylistically clear and vernacular forms. Queen Anne houses typically feature asymmetrical façades with a combination of hipped roofs and decorative gables, as well as angled bay windows and turrets. The style is well known for ornate trim, including scroll-cut brackets and decorative window surrounds. Porches on Queen Anne houses usually project from the building mass and feature turned columns and additional ornate trim. Local Queen Anne cottages have traditional hipped main blocks with a single, projecting gable, often accenting front-facing angled bay windows; these cottages have less ornate trimwork, but still include some porch brackets and other delicate features.

Shingle-style houses are recognized by their broad, gabled forms—often multiple stories or half-stories are protected by the same gabled roof. Shingle-style walls have cantilevers, bays, and eyebrow forms that are frequently shingled to cover these complex articulations. The shingles can be cut and laid in patterns that represent traditional stonework details, such as keystones and quoins. Shingle-style houses often include Neoclassical-style porch columns, window casings with pilaster trim, and heavy brackets and dentils.

Residential construction slowed briefly near the turn of the twentieth century, although during this period the budding Arts and Crafts movement found proponents among vernacular house builders. Craftsman-style houses typified the trend, with horizontal forms and heavy trim, but equally noteworthy during this period in San José was the evolution and development of the Neoclassical bungalow.

Houses built during the early twentieth century have a horizontal orientation that is often highlighted by long porch beams, broad eaves, and ribbons of windows. A majority of these houses in California are one story, Craftsman-style houses include a variety of features that set them off from other styles: knee braces at their gable ends, outlookers, massive porch posts and/or truncated posts that rest on solid, sided porch railings, exposed rafter tails and other expressions of joinery, and wide front doors, as well as double-hung and casement windows with horizontal proportions. Often Craftsman bungalows have cantilevered, square-bay windows. Neoclassical bungalows have similar proportions and use similar materials, including tri-bevel teardrop siding; however, their distinctive features include the small hipped or gabled dormers at their standard hipped roofs that also sometimes have forward-facing gabled pediments. These houses have Tuscan or other classical turned porch columns and solid porch railing, and a great many have recessed porches and shallow angled bay windows tucked under boxed eaves. They can be further recognized by their false-beveled teardrop siding.

Over time, Craftsman-style houses began to take on new exterior detailing reminiscent of historic and international examples, and in the 1920s-1930s, the Eclectic Revival or Period Revival style became characteristic of both residential and non-residential construction. Such styles as Spanish Eclectic became popular. Even very modest residences included Eclectic Revival detailing, such as Spanish tile roofs, raised and inset plaster ornament, arched porches and arched picture windows, and shaped buttresses.

Architectural significance is identified when a building distinctly represents a particular style or building type. In this neighborhood, there is a predominant representation of houses in a limited variety of styles, and the structures that illustrate this pattern are significant for their contributions to the overall character of their surroundings. History can be understood from evaluating primary and secondary resources. Just as a history book can serve as a secondary resource for analysis of an area or era and as a diary or a historic map can serve as a primary resource to understand a more specific instance of history, buildings can also provide primary historical information that illustrates the lifestyle, tools, materials, priorities, economic situations, and values of people from earlier eras. Additionally, some districts provide a window into the artistic expression of design from the past. The buildings within the Lake House neighborhood illustrate a broad selection of detailing that includes stained glass, porch columns, handrail designs, bay window trim, bargeboards, corbels, and shingles in a variety of Victorian-era motifs.

Key urban design features that affect the overall character of the Lake House neighborhood include front yard setbacks, continuity of materials, and building massing, scale, and size. The regular lot sizes established parameters that have limited the size and massing of houses in the neighborhood. Traditional single-family residences form the main character of much of the Lake House neighborhood. Both one and two-story houses are found, as are both vernacular and stylistically elaborate designs. The houses tend to have rectangular footprints, with the narrower portion at the street frontage. Roofs are hipped and cover the bulk of each structure, but dormers and gable ends add diversity. The front yard setbacks are consistent throughout most of the neighborhood; the consistent landscaping includes low concrete retaining walls at the sidewalks. The side yard setbacks are narrow by current standards; the pattern of houses allows just enough space between them for a driveway; however, the rear yards are proportionately generous. Because of their age of construction, as well as the constraints of the parcels, most of the houses in the area have detached garages, some of which were modified from earlier outbuildings. The scale of the parcels prohibits large outbuildings, so most of these garages and sheds are modest in size and form and set well to the rear of the properties.

One story that is told by some buildings in the Lake House area is that of the transitory nature of early houses. Without foundations, indoor plumbing or electrical connections, buildings were easily relocated. A few existing houses were moved onto their current sites after their initial construction elsewhere; all of these were moved from other parcels within the neighborhood.

San José in 1950 bore a much greater resemblance to the San José of 1900 than to the city we live in today. The central portions of the city had developed over the previous 100 years, starting with California statehood in 1850. Between 1850 and 1950, most traces of the earlier Spanish-Mexican city had been obliterated; however, while the rest of San José expanded after 1950, the central city core, of which the Lake House neighborhood is a part, remained largely intact, leaving a good record of the first century of development of American San José within the greater frame area of the downtown.

HISTORIC DISTRICT ANALYSIS and STATEMENT OF SIGNIFICANCE

The properties in the Lake House neighborhood were first identified by the San Jose Historic Landmarks Commission in the early 1990s as potentially eligible for designation as a local city landmark historic district, as the area has the integrity and visual sense of a historic place. Although there are some properties within the proposed district area that do not contribute to the historic fabric of the neighborhood, the historic district area as a whole possesses integrity of location, design, setting, materials, workmanship, feeling, and association. The proposed district area's streetscapes of primarily 1890s Queen Anne Victorian, wood-frame, single-family houses, the area's similarity of scale and setbacks that, along with mature landscaping, provide a cohesive setting for the houses, and the relatively consistent use of exterior finishes, convey a clear historical association with the early development of the neighborhood from about 1885 to 1925.

A small number of properties within the greater study area along Park Avenue are not associated with this historic period and pattern of development, or in one case have such a low level of integrity that the property does not contribute to the setting. The proposed City Landmark Historic District (CLHD) is recognizable in the present as an aesthetically pleasing concentration of historic residential architecture, physically surrounded by boundaries defined by changes in neighborhood development. This potential district, larger than the area considered for National Register eligibility by Ward and Laffey in the late 1990s, has a sense of historical continuity within the public consciousness.

The Lake House neighborhood is distinguishable as a place within the larger context of downtown San José, and is easily recognized by the distinctive residential architecture built from 1885 to 1925.

It is significant for:

- its representation of a comprehensive pattern of historic development to the west of the downtown frame area;
- its association with residential development during the period 1885-1925; and
- its embodiment, within the boundaries of the neighborhood, of architectural styles that represent the breadth of design of the period.

The identified potential Lake House City Landmark Historic District as a place presents a unique and distinct experience of the visual aspects of neighborhood life in a community for most of the historic period during which it was developed. The district maintains a high level of physical integrity to its evolution at the beginning of the 20th century. Although there have been some changes to the neighborhood as property owners continue to renovate in the area, most of these buildings have not had an intrusive impact on the historic fabric.

SOURCES CONSULTED AND CITED

- Arbuckle, Clyde, *Clyde Arbuckle's History of San Jose*. San José: Smith and McKay Printing Co., 1984.
- Cassity, P., *Maintaining Community Character: How to Establish a Local Historic District*. National Trust for Historic Preservation, 2001
- City of San José
1929-1953 Zoning Maps
1850-1890 Tax Assessment Rolls, on file at the History San José archives.
- Clayton, James A., Pub.
Map of the City of San José. San Francisco: Britton & Rey, 1886.
- County of Santa Clara
Office of the Recorder, Death Index, 1905-.
- Delgado, J. P.
Witness to Empire: The Life of Antonio Maria Suñol. San José: Sourisseau Academy for State and Local History, SJSU, 1777.
- Detlefs [Duval], C., *Flour Milling in Santa Clara County 1840-1898*. A Thesis at San José State University, 1985.
- Dittrich & Parker
Lake House Tract. Surveyed March 16, 1891. Recorded Map E:83.
- Fox, F. L.
1978 *Land Grant to Landmark*. San José: The Pied Piper Publishers.
- Harriman, F. G., Block Book of the City of San José, Santa Clara County. Compiled from Official Records by F. G. Harriman, 1909.
- Healy, Charles T.
French Gardens, 1862a. Miscellaneous Map Box A001569. On file at the History San José archives.

A Plan of the French Gardens, A. Delmas, proprietor, 1862b. Recorded December 23, 1885 by Pedro de Saisset, originally filed June 5, 1862. (Recorded Map B:31).
- Henderson, J., Ed.
Reflections of the Past, an Anthology of San José. Encinitas: Heritage Media Corporation, 1996.

Herrmann, A. T.

Map of the proposed improvement of that part of Los Gatos Creek from Santa Clara to the western City Limits of the City of San José, 1873. (Court House Map #3599.)

Hill, W., G. Laffey, C. Duval, A. H. Halberstadt, & W. Minor

Historic Properties Survey Report, Vasona Corridor Light Rail Project, Santa Clara County. Prepared by Basin Research Associates, Inc. for Federal Transit Administration Region IX and Santa Clara Valley Transportation Authority, 1999.

Kennedy, Helen Weber

Vignettes of the Gardens of San José de Guadalupe. San Francisco: San Francisco Garden Club, 1938.

Laffey, Glory Anne,

Historical Overview and Context for the City of San José. Prepared by Archives and Architecture for the Planning Department of the City of San José, 1992.

Lewis, W. J.

Survey for Oliver Magnant. January 29, 1851. Office of the County Surveyor, 1851. (County Surveyor's Map A:41).

French Gardens for A. Delmas. Survey No. 301 July 11, 1854. Office of the County Surveyor, 1854. (County Surveyor's Map A:341).

Loomis, P.

S. J. Famed for Lake Resorts, Garden Parks. *San Jose News*, July, 9, 1976.

National Park Service

Defining Boundaries for National Register Properties. (Technical Assistance Bulletin).

Guidelines for Local Surveys: A Basis for Preservation Planning. (National Register Bulletin #24).

How to Complete the National Register Multiple Property Documentation Form. (National Register Bulletin #16).

Pieper, J. H.

Map accompanying the Report of Commissioners appointed to partition of the Lands described in a Decree of the 3rd District Court dated September 19th, 1870, issued in the suit of James A. Clayton and Lazar Lion, Plffs vs P. et als Defts, 1871. Map on file in the California Room, Martin Luther King Jr. Library.

Diagram of proposed opening and extension of San Fernando Street from River Street to the Western City Limits, made in accordance with an ordinance of the Mayor and the Common Council of the City of San José, approved August 5, 1878.

Pierce, M.

San José and It's Cathedral. Santa Cruz: Western Tanager Press, 1990.

Polk, R. L. & Co. and Polk-Husted, Publishers

Directory of San Jose and Santa Clara County, 1870-1973.

Richards, W. A.

Map of a Road Petitioned for [West San Fernando Street] by J. B. J. Portal et al, 1880. (Surveyor's Map E:31)

Sanborn Fire Insurance Maps, San José 1884-1966.

San Jose Daily Mercury

Jules Adolphe Dufie. January 28, 1890.

Ended his Pain. Suicide of J. D. Bayle to Avoid an Operation. March 27, 1897.

Notable Assembly of Aged Pioneers. March 7, 1909.

San Jose Mercury

Santa Clara County and its Resources, A Souvenir of The San Jose Mercury, 1896.

Smith, S. Worsley

A Map of Prevost's Survey. Office of the Santa Clara County Surveyor, 1862.

Spearman, A. D.

The Five Franciscan Churches of Mission Santa Clara, 1777-1825. Palo Alto: The National Press, 1963.

Sullivan, Charles L.

Like Modern Edens, Winegrowing in Santa Clara Valley and Santa Cruz Mountains 1708-1981. Cupertino: California History Center, 1982.

Personal communication with Charlene Duval, 1999.

Thomas Bros.

Block Book of San José, Volume 4. Los Angeles: Thomas Bros., 1924.

Thompson & West

1876 Historical Atlas Map of Santa Clara County, California. San Francisco: Thompson & West. Reprinted by Smith & Mckay Printing Co., 1973.

United States Bureau of the Census

1860-1920, Census for Santa Clara County

Wright, R., *A Guide to Delineating Edges of Historic Districts*. Washington: National Trust for Historic Preservation, 1976.

State of California – The Resources Agency
DEPARTMENT OF PARKS AND RECREATION
DISTRICT RECORD

Primary #
HRI #
Trinomial

Page 1 of 5 *Resource Name or # (Assigned by recorder) Lake House City Landmark Historic District

D1. Historic Name: Lake House neighborhood **D2. Common Name:** Lake House neighborhood in Delmas Park

***D3. Detailed Description** (Discuss overall coherence of the district, its setting, visual characteristics, and minor features. List all elements of district.):
The Lake House neighborhood developed as a single-family residential area between the mid-1880s and the mid-1920s. The Lake House Tract itself was created in 1891, overlapping a portion of the area known as the Delmas Survey and extending into a portion of the early Rancho Los Coches lands to the west of this early subdivision. During the Early American Period (1846-1869), park and nursery uses occurred in this area to the west of downtown San Jose, but those uses disappeared near the end of the nineteenth century as the residential areas of the central city expanded to the west of the Guadalupe River. The bridging of the Guadalupe River at West San Fernando Street during the 1880s and the street's farther extension across Los Gatos Creek at about the same time, serve as the beginning of a period of residential development in the area. Residential construction continued for about 40 years, with most of it occurring during the 1890s. The area was built out by 1925.

The neighborhood shares its development pattern with other older neighborhoods west of San José's downtown; however, this particular area is now distinct. It retains an intact visual character of similarly massed houses with period detailing, which is in contrast to surrounding twentieth-century development that replaced historic residential development on adjacent blocks. The Lake House neighborhood continues to represent an earlier sense of time and place reflective of residential development between 1885 and 1925 at the edge of the original city limits.

***D4. Boundary Description** (Describe limits of district and attach map showing boundary and district elements.):

The Lake House City Landmark Historic District is generally bounded on the north by West San Fernando Street, on the east by State Highway 87 and the VTA Light Rail right-of-way, on the west by Los Gatos Creek, on the south by the rear property lines of lots on the north side of Park Avenue, and on the southeast by Sonoma Street and Lakehouse Avenue. (see boundary map next page)

***D5. Boundary Justification:**

The Lake House City Landmark Historic District is a visually distinct area within its greater vicinity. Consisting mostly of residential buildings constructed as single family residences, and primarily set within an 1891 subdivision called the Lake House Tract, this neighborhood has been isolated from adjacent historic residential areas due to twentieth century development and the construction of State Route 87. Most of the properties within the neighborhood were developed for residential use within a narrow timeframe (1891-1906) and have form and detailing reflective of the period. Other properties that were developed either slightly earlier or slightly later have strong neighborhood associations that contribute to the understanding of this historic place that is visually cohesive within the context of the downtown residential frame.

This historic residential neighborhood is located at the north end of the city's Delmas Park Strong Neighborhoods Initiative (SNI) Planning Area. This planning area encompasses 24 city blocks west of the downtown core area, which is framed by State Route 87, Interstate 280, Bird Avenue, Los Gatos Creek, and West Santa Clara Street. Most of the properties within this planning area are small-lot residential parcels, with a mix of commercial and industrial uses found throughout the larger neighborhood, particularly along the West San Carlos Street and Park Avenue thoroughfares. Most of the residential development occurred in the decades just before and after 1900; however, recent property assemblage has facilitated the development of new infill multifamily residential complexes within the area.

***D10. Significance:** Theme Architecture and Shelter Area Portion of Delmas Park SNI area
Period of Significance 1885-1925 Property Type Residential Applicable Criteria California Register: (1) & (3)
(Discuss district's importance in terms of its historical context as defined by theme, period of significance, and geographic scope.
Also address the integrity of the district as a whole.)

(See next page, Continuation Sheet)

***B12. References:**

Archives & Architecture, *Historic District Study, Lake House Neighborhood*, San José, 2006.
Laffey, Glory Anne, *Historical Overview and Context for the City of San José*, 1992.

***D8. Evaluator:** Franklin Maggi, Preservation Planner

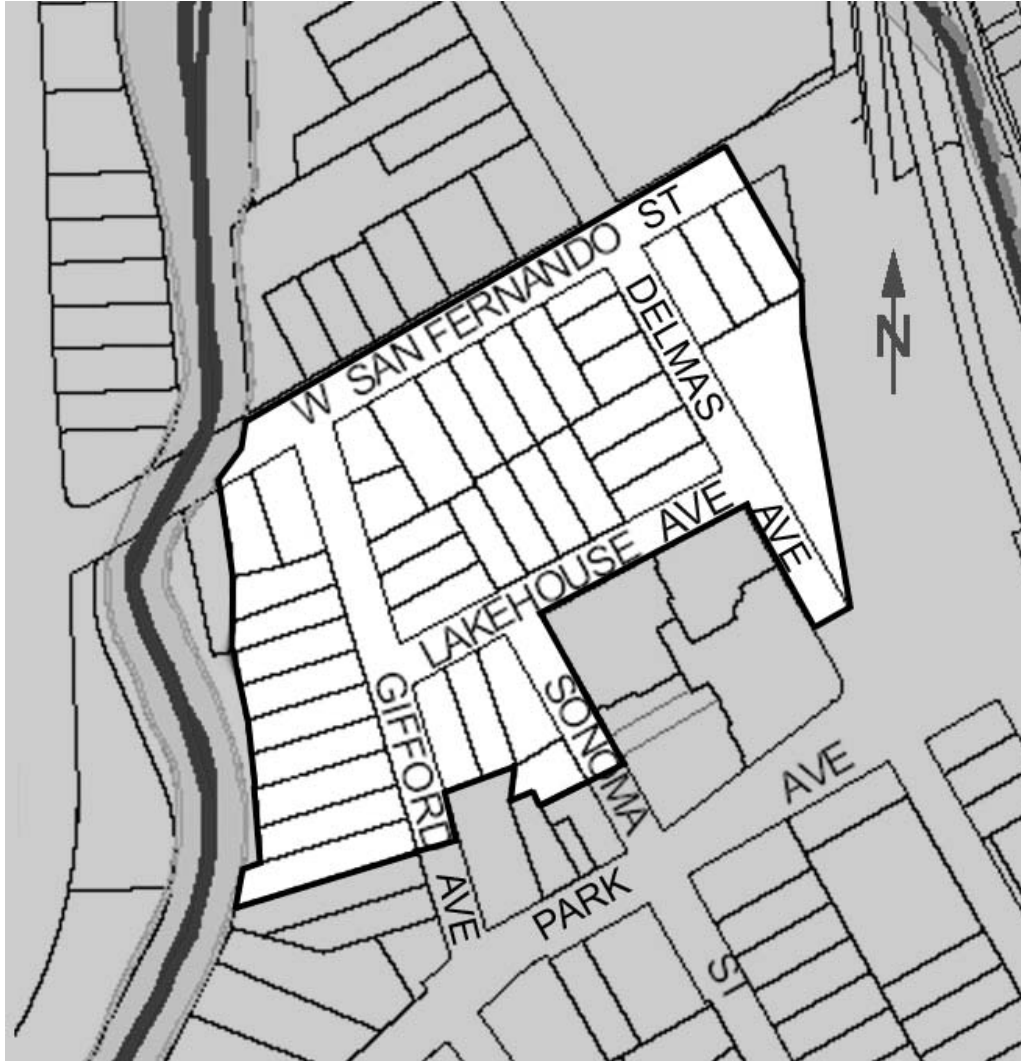
***Date:** 5/26/2006

Affiliation and Address: Archives & Architecture, PO Box 1332, San José, CA 95109
DPR 523D (1/95)

***Required information**

Page 2 of 5 *Resource Name or # (Assigned by recorder) Lake House City Landmark Historic District

*Recorded by Franklin Maggi, Charlene Duval and Leslie Dill *Date 5/26/2006 ☒ Continuation ☐ Update



LAKE HOUSE CITY LANDMARK HISTORIC DISTRICT BOUNDARY MAP (NOT TO SCALE)

State of California – The Resources Agency
DEPARTMENT OF PARKS AND RECREATION
CONTINUATION SHEET

Primary #
HRI #
Trinomial

Page 3 of 5 *Resource Name or # (Assigned by recorder) Lake House City Landmark Historic District

*Recorded by Franklin Maggi, Charlene Duval and Leslie Dill *Date 5/26/2006 ☒ Continuation ☐ Update

(Continued from page 1 Section D10)

HISTORICAL BACKGROUND

The Lake House City Landmark Historic District area consists of 39 properties located at the west end of, and to the west of, San Jose's Original City. The first city limits of San José, established in 1850, were the result of a number of surveys in the late 1840s, which created the greater downtown frame as we know it today. The western boundary of the Original City ran from a point in the early Commodore Robert Stockton Rancho *El Portrero de Santa Clara* at the northwest (near McKendrie and Spring Streets) - to the southeast along a straight line that ended in Pueblo Farm Lot #5 owned by Charles White in the 1840s and later by Margret Reed. A portion of mission lands directly to the west of the Pueblo de San Jose prior to the Early American Period was granted to Roberto Balermينو, a Native American formerly associated with Mission Santa Clara. Balermينو had received permission to occupy the area that had been a part of the pasturelands of the mission as early as 1836. Antonio Maria Suñol, a native of Barcelona received a patent on the title to *Rancho de Los Coches* in 1856 during the first decade of California statehood.

The Los Coches Rancho lands nearest to downtown San José were adjacent to what would become San Jose's Fourth Ward in the 1860s. This larger unincorporated area to the west has been identified in a number of ways over the years: as the Suñol Addition, Western Addition, the Hester District, as part of "The Willows", and, when it was annexed to the City of San José in 1911, it was referred to as the Gardner Annexation. Residential lot subdivisions such as the Lake House Tract began to appear in the early 1890s; much of the initial development occurred in unincorporated Santa Clara County.

Antoine Delmas, the "master of the French nurserymen in San José," left France in 1849 and settled in San José about 1851, shortly thereafter purchasing a portion of the northeast corner of the Los Coches Rancho from Antonio Maria Suñol. Delmas created his "French Gardens" in the vicinity of the future Lake House neighborhood; this portion of the city grew to have a strong, early association with French immigrants. It was near the intersection of Delmas Avenue and West San Fernando Street that, in 1869, the Lake House hotel was developed, serving as a summer resort for local residents. Ten years later, as the city began to expand to the west, the extension of West San Fernando Street through this area set the stage for new residential development, and the Lake House was relocated to the southwest corner of Delmas Avenue and West San Fernando Street.

The larger area surrounding the Lake House between Santa Clara and San Carlos Streets and between Los Gatos Creek and the Guadalupe River, including most of the Lake House neighborhood (prior to its development) and its surroundings, was known for its park-like appearance and activities. The Lake House itself was the center of social life of the local French-American community and was often the site of local Bastille Day celebrations, the first occurring in 1876.

Other portions of Delmas's French Gardens were developed during the 1880s and 1890s, including the southeast corner of Delmas Avenue and West San Fernando Street. Houses were constructed on both sides of West San Fernando Street between Delmas Avenue and the Guadalupe River, of which three continue to exist today and have strong visual associations with the properties within the original Lake House Tract. The neighborhood housed many local merchants including local grocer Fortunato Chiappe whose still-extant house at 396 West San Fernando Street was designed by architect Theodore Lenzen. Charles Owen, son of San Jose Mercury editor J. J. Owen, built the large house at the southeast corner of West San Fernando Street and Delmas Avenue in 1888. In the 1880s, on the east side of Delmas Avenue, was the home of Gustave Brohaska and his prominent family of musicians. In 1911, his son, Theodore Brohaska, a city councilmember, replaced their older home with a craftsman bungalow that remains today at 124 Delmas Ave. This house, owned by the County of Santa Clara, is San José City Landmark #HL 80-16, formally recognized in 1980 as the early home of opera star Irene Dalis after her father Peter Dalis purchased the property in 1922.

(Continued next page)

State of California – The Resources Agency
DEPARTMENT OF PARKS AND RECREATION
CONTINUATION SHEET

Primary #
HRI #
Trinomial

Page 4 of 5 *Resource Name or # (Assigned by recorder) Lake House City Landmark Historic District

*Recorded by Franklin Maggi, Charlene Duval and Leslie Dill *Date 5/26/2006 ☒ Continuation ☐ Update

(Continued from previous page)

The Lake House Tract

In 1887, Joseph Bayle (*né* Magliore) sold the Lake House property to Dr. Charles Breyfogle and Frank H. Mabury. Joseph's brother, Augustine Bayle, continued to operate the hotel until 1895. After Jules Dufie's death in 1890, a large portion of his property to the west of the Delmas Survey was sold to Valentine Koch. In 1891, the property between Delmas Avenue and Los Gatos Creek, south of West San Fernando Street, was subdivided into 36 lots surrounding Dufie's house lot; it was called the Lake House Tract by then-owners Mabury, Koch and Schilling. A portion of Lutzen's property on the bank of Los Gatos Creek (John Martin's property), and the bulk of Schilling's property were excluded from the subdivision.

The Lake House hotel occupied Lots 1-6 of the Lake House Tract along West San Fernando Street west of Delmas Avenue. The hotel continued to operate as a boarding house and restaurant until about 1897 when it was demolished and replaced by a grocery store built at the corner of Delmas Avenue and West San Fernando Street. Mrs. D. Bayle had built the New Lake House, a boarding house, in 1895 on Lot 6. This building, although remodeled, still stands at 426 West San Fernando Street.

During the 1890s, the Lake House Tract was developed into a community of primarily Queen Anne-style residences. Among the local architects known to have designed houses in this neighborhood were Jacob Lenzen, J. O. McKee, Charles F. Carto, and Wolfe & McKenzie. This was an area originally populated by local merchants, most notably James Leaman, the founder of Red Star Laundry, who first lived in the Lake House Hotel then occupied three homes in the neighborhood between 1893 and 1913. Homes survive that belonged to local businessmen William F. Foss, J. S. Williams, Hiram Lewis, W. J. Rogers and newspapermen Graham and Baggerly.

The western boundary of the Original City remained in place until 1911, when the Gardner Annexation expanded the city westward. During the next two decades, the city began a westward expansion, with annexing lands between San José and Santa Clara along The Alameda in the 1920s, consolidating the newly formed town of Willow Glen in the 1930s. In 1929, zoning was formally established in San José and a zoning overlay map adopted for the lands within city boundaries at that time. The 1929 zoning had set a policy direction for the long-term transformation of the residential areas in the downtown frame. Suburban growth in the 1920s, enabled by the automobile, resulted in most new single-family housing construction taking place outside the original city limits. The area to the west of the downtown was targeted as a future industrial growth area to serve housing tracts being developed at the outer edges of the city core. The area now known as Delmas Park was planned to be an industrial expansion area, although development over the next few decades occurred primarily on vacant lands in the area, which could accommodate the needs of new industries. A consequence of the zoning was an influx of smaller-scaled industrial sites that were permitted within existing older residential neighborhoods.

The re-routing of the Southern Pacific Railroad from the downtown in the early 1930s to its current alignment at Cahill began a neighborhood transformation in the west downtown frame, furthered by construction of Interstate 280 in the 1960s that split the residential neighborhood in the Gardner District. Redevelopment activities in the western downtown core area began in the early 1960s, and subsequent construction of State Route 87, beginning in the late 1970s, created a visual separation between the now named Delmas Park area and the downtown, serving also to distinguish the neighborhood as a distinct place.

The Delmas Park planning area, and specifically the Lake House neighborhood, remains a diverse mix of turn-of-the-century single-family residences, many converted to multi-family, and small mixed commercial/industrial uses. The boundaries are well defined by surrounding contemporary development, and will be further framed by new development in the Diridon Station/Arena area and by new housing further west in the Mid-town area along Auzeais Street. The physical character of the Lake House neighborhood, however, has remained relatively unchanged for the past 100 years. It now has a strong sense of historic place within the larger downtown frame of San José.

(Continued on next page)

State of California – The Resources Agency
DEPARTMENT OF PARKS AND RECREATION
CONTINUATION SHEET

Primary #
HRI #
Trinomial

Page 5 of 5 *Resource Name or # (Assigned by recorder) Lake House City Landmark Historic District

*Recorded by Franklin Maggi, Charlene Duval and Leslie Dill *Date 5/26/2006 ☒ Continuation ☐ Update

(Continued from previous page)

EVALUATION AND STATEMENT OF SIGNIFICANCE

The properties within the Lake House neighborhood identified in this record constitute a historic district that meets the criteria of a local landmark district established by the City's Historic Preservation Ordinance, having the integrity and visual sense of a historic place. Although there are some properties within the proposed district area that do not contribute to the historic fabric of the neighborhood, the historic district area as a whole possesses integrity of location, design, setting, materials, workmanship, feeling, and association. The proposed district area's streetscapes of primarily 1890s Queen Anne Victorian, wood-frame, single-family houses, the area's similarity of scale and setbacks that, along with mature landscaping, provide a cohesive setting for the houses, and the relatively consistent use of exterior finishes, convey a clear historical association with the early development of the neighborhood from about 1885 to 1925.

The proposed City Landmark Historic District (CLHD) is recognizable in the present as an aesthetically pleasing concentration of historic residential architecture, physically surrounded by boundaries defined by changes in neighborhood development. This district has a sense of historical continuity within the public consciousness.

The Lake House neighborhood is distinguishable as a place within the larger context of downtown San José, and is easily recognized by the distinctive residential architecture built from 1885 to 1925.

It is significant for:

- its representation of a comprehensive pattern of historic development to the west of the downtown frame area;
- its association with residential development during the period 1885-1925; and
- its embodiment, within the boundaries of the neighborhood, of architectural styles that represent the breadth of design of the period.

The identified potential Lake House City Landmark Historic District as a place presents a unique and distinct experience of the visual aspects of neighborhood life in a community for most of the historic period during which it was developed. The district maintains a high level of physical integrity to its evolution at the beginning of the 20th century. Although there have been some changes to the neighborhood as property owners continue to renovate in the area, most of these buildings have not had an intrusive impact on the historic fabric.

By definition, under San Jose City Ordinance 13.48.0202(B) "Historic district" shall mean a geographically definable area of urban or rural character, possessing a significant concentration or continuity of site, building, structures or objects unified by past events or aesthetically by plan or physical development. The Lake House City Landmark Historic District is recognizable in the present as an aesthetically pleasing concentration of historic residential architecture, physically surrounded by boundaries defined by changes in urban development.

Under the criteria of the California Register of Historical Resources, the district appears to qualify for listing as a locally important grouping of historic properties under (1), for its association with local residential development at the edge of San José during its period of horticultural development in the late nineteenth and early twentieth century that clearly reflects the pattern of development in this period in the broader context of the history of San José, and under (3) as a distinguished collection of residential buildings and related ancillary structures, many designed by notable local architects, that embody the distinctive characteristics of the late Victorian era in San José.

State of California - The Resources Agency
DEPARTMENT OF PARKS AND RECREATION
PRIMARY RECORD

Primary #
HRI #
Trinomial
NRHP Status Code

Other Listings
Review Code

Reviewer

Date

Page 1 of 3 *Resource Name or # (Assigned by recorder): Arata House

P1. Other identifier: None

*P2. Location: ☐ Not for Publication ☒ Unrestricted

*a. County Santa Clara

and (P2b and P2c or P2d. Attach a location map as necessary.)

*b. USGS 7.5' Quad San Jose West

Date 1980 photo revised T .7S. ; R .1E. ; Mount Diablo B.M.

c. Address: 454 San Fernando St., West

City San Jose

Zip 95110

d. UTM:(give more than one for large and/or linear resources)

Zone 10S ; 597540

mE/ 4131989

mN

e. Other Locational Data: (e.g., parcel #, directions to resource, elevation, etc., as appropriate)

Southwest corner of West San Fernando Street and Gifford Avenue

APN# 259-48-019

*P3a. Description: (Describe resource and its major elements, include design, material, condition, alterations, size, setting, and boundaries)

This Neoclassical-style house with eclectic influences helps establish the character of the Lakehouse neighborhood. It illustrates, through its form and detailing, the cohesive, well-defined pattern of development of this residential neighborhood adjacent to San Jose's downtown core.

This one-story corner house has the form and general detailing typical of much of the early twentieth century Lakehouse neighborhood: it has a raised, blocky mostly rectangular mass covered by a moderately pitched hipped roof accented by a central, hipped dormer to the front (north) and a gabled pediment over a bay window that faces east, toward Gifford Avenue. The front façade is slightly narrower than the main block, it sits away from the main corner. The rear of the house has some shallow projecting wings to each side. As common for the period, the eaves are moderate in depth and boxed, with integral wood gutters and round downspouts. The tri-bevel lap siding butts into a thin rounded band at the corner. The windows are cased with flat board heads and sides, with a minimal apron. A thin belly band stretches across the front façade at the level of the porch railing.

(See page 3, Continuation sheet)

*P3b. Resource Attributes: (List attributes and codes) HP3. Multiple family property

*P4. Resources Present: ☒ Building ☐ Structure ☐ Object ☐ Site ☒ District ☐ Element of District ☐ Other (Isolates, etc.)



P5b. Description of Photo:

(View, date, accession #)

View facing south, 12/05

*P6. Date Constructed/Age and Source:

☒ Historic ☐ Prehistoric ☐ Both

1911, building permit, 95 years old.

*P7. Owner and Address:

MARTINEZ 1990 TRUST
454 W FERNANDO ST
SAN JOSE CA 95110

*P8. Recorded By: (Name, affiliation, and address)

C. Duval, L. Dill & F. Maggi

Archives & Architecture
PO Box 1332
San Jose CA 95109

*P9. Date Recorded: 5/26/06

*P10. Survey Type: (Describe)

Intensive

*P11. Report Citation: (Cite survey report and other sources, or enter "none".)

Archives & Architecture, Historic District Study - Lake House Neighborhood, prepared for the City of San Jose, April 28, 2006.

*Attachments:

☐ None

☒ Continuation Sheet

☒ District Record

☐ Rock Art Record

☐ Other (List):

☐ Location Map

☒ Building, Structure, and Object Record

☐ Linear Feature Record

☐ Artifact Record

☐ Sketch Map

☐ Archaeological Record

☐ Milling Station Record

☐ Photograph Record

DPR 523A (1/95)

* Required Information

State of California - The Resources Agency
DEPARTMENT OF PARKS AND RECREATION
BUILDING, STRUCTURE, AND OBJECT RECORD

Primary #
HRI #

Page 2 of 3

*NRHP/CRHR Status Code 5D2

Resource Name (Assigned by recorder) Arata House

B1. Historic Name: Colombo Arata House

B2. Common Name: 454 West San Fernando St.

B3. Original Use: Residential

B4. Present Use: Multi-family residential

*B5. Architectural Style: Neoclassical Revival

*B6. Construction History: (Construction date, alterations, and date of alterations)

Converted to multi-family prior to 1974 when an electrical permit was issued that indicated the property was being used as a duplex.

*B7. Moved? ☒ No ☐ Yes ☐ Unknown Date: n/a

Original Location: n/a

*B8. Related Features:

None

B9a. Architect: Charles McKenzie

b. Builder: Morrison Bros.

*B10. Significance: Theme Architecture and Shelter

Area: Delmas Park SNI

Period of Significance: 1885-1925

Property Type: Residential

Applicable Criteria: 1, 3

(Discuss importance in terms of historical or architectural context as defined by theme, period and geographic scope. Also address integrity.)

The house located at 454 West San Fernando Street was constructed in 1911 by Colomba Arata. Mrs. Arata was the widow of Paolo Arata, an Italian gardener and former Greystone Quarry stonecutter who passed away in 1899. The house design was chosen from the Book of Designs, published by the firm of Frank D. Wolfe and Charles McKenzie in 1907. Although reversed, the house appears to be Plan No 64, and the cost was \$3,600. The building permit was dated 1911, a year after the dissolution of the partnership of the two architects in 1910. Charles McKenzie was listed as the architect and the builders were the Morrison Bros., well-known contractors from Santa Clara. Mrs. Arata purchased the house with money she received when the Southern Pacific Railroad bought her home at 6 Cahill Street. Living with Mrs. Arata were sons Albert, a millhand, and Louis F., a worker at Fredricksburg Brewery, and her daughter Eleanor. The family lived in the house until about 1920/1921 when it was sold to Lee W. Hutchins, a real estate salesman. The Aratas also owned the vacant lot to the west of #454, which they maintained after the house was sold. The Hutchins family lived at #454 until the late 1930s. Thomas E. Bambury was the occupant/owner until at least the late 1950s when ownership shifted to Joseph F. O'Keefe. Bambury's wife Estelle was the daughter of French jeweler, (See next page, Continuation sheet)

B11. Additional Resource Attributes: (list attributes and codes) HP2. Single family property

*B12. References:

(Sketch Map with north arrow required.)

(See next page, Continuation sheet)

B13. Remarks: Contributor to Lake House Historic District.
Existing classification(s): ENR

*B14. Evaluator: Franklin Maggi

*Date of Evaluation: May 26, 2006

(This space reserved for official comments.)



CONTINUATION SHEET

Page 3 of 3 *Resource Name or # (Assigned by recorder) Arata House

* Recorded By C. Duval, L. Dill & F. Maggi

* Date 5/26/2006

☒ Continuation ☐ Update*(Continued from page 1, DPR523a, P3a)*

Eclectic detailing and Neoclassical forms distinguishes this house from others in the neighborhood. Such distinctive elements include the broad corner entry and steps with undulating side walls, the heavy Tuscan columns, the cantilevered corner square bay window with its bell-cast hip roof and elaborate supporting braces, the quatrefoil windows, and the cantilevered dormer. Entry is at the corner, through a projecting, partially conically roofed porch that wraps the corner of the house in a curve, between the front wing and the main mass of the house. The porch roof is set below the main eaves and is moderately pitched. A square, corner bay window projects from the northwest corner of the house; its roof is convex and wraps the corner in a hip. The main windows within that bay have been replaced by aluminum sliders, but the stained-glass transoms remain; the corners of the bay window are set off by recessed panels. The solid, jigsaw brackets beneath this bay are spaced tightly together. A similar, but angled, bay window projects to the west side, behind the corner bay. It has a simple hipped roof and stained-glass transoms that match the front windows. An angled bay window also projects to the east side; it is covered by a gabled pediment that projects farther, supported by a pair of carved corbels. This bay window is supported on 4x4 outlookers; its transoms match the others. The east gable features a single 8-lite (4x2) window and clad in shingles. At the front of the house, a dormer is supported on outlookers below the main roof eaves; then divides the eaveline and projects in part from the main roof; it is shingled and has a single-lite window. Original fenestration has generally been replaced by vinyl inserts, and basement-level windows are visible in the east side pony wall. The setting includes a shallow side yard with a low concrete retaining wall at the sidewalk, while the front setback has been paved in concrete. A driveway enters the property from Gifford Avenue at the rear of the east side of the property.

(Continued from page , DPR523b, B10)

Emil Feuillard. The Bamburys were still living in the house, however, as late as 1970. The design shows a central doorway, but the house now has two entrances on either end of the porch. This modification could have been part of original design alterations or may have occurred in the 1940s when the house appears to have been divided into two living units.

This residential property contributes to the locally significant Lake House City Landmark Historic District; its form and detailing maintain integrity to residential design and patterns of neighborhood development prior to 1926 when the residential properties in the neighborhood were developed. It is a distinctive architectural design deriving from the prominent firm of Wolfe & McKenzie.

(Continued from page 2, DPR523b, B12)

Arata, P., Verdict of the Coroner's Jury, 6/6/1899.

Arata, L. K., Personal communication with C. Duval regarding Arata family history, 1999.

Arata family archives, Photograph of Arata home at 454 W. San Fernando Street, c1911-1915.

Espinola, George, Personal communication with C. Duval regarding architect, 1999.

Hill & Laffey, DPR523, 1999.

San Jose Building Permit #1534, 6/23/1911.

Santa Clara County Great Registers, 1900-1914.

San Jose City Directories, 1910-1975.

Sanborn Fire Insurance Map Co., San Jose, 1891-1966.

Thomas Block Book, 1924.

Wolfe & McKenzie, *Book of Designs*. Prepared from Designs Originated by Wolfe & McKenzie, 1907.

Zavlaris & Dixon, Historic Resource Inventory, 1978.